



Firefix[®] Double Clip

- LUL Approved product register ID 1960.
- Nail fixed fire resistant clip.
- The Firefix™ system is fast easy and meets the cable support requirements of British standards: BS5839-1: 2002, BS5266-1:2011 and BS5839-8: 2006.
- Designed to be used with the Spit Pulsa™ gas nailing technology for rapid installation.
- Made from corrosion resistant stainless steel which is coated with an intumescent LSOH coating in either white or red to match the cable.
- Should be installed in accordance with BS7671 / IEE wiring regulations, or other appropriate code.
- Can be fixed to steel, block work, composite steel decking, brick or concrete.
- The fixing of the clip and installation of the cable takes just 10 seconds.

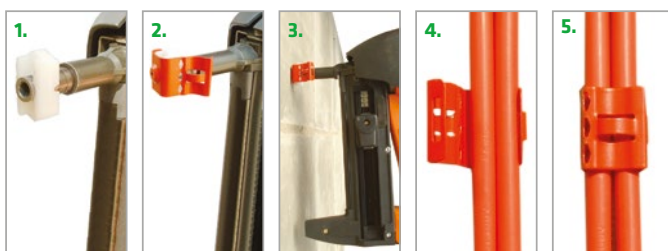
Kit Selection

Kit contents : Clips, ITW Nails and gas cartridge, pin guide adaptors



Clip Selection				Clip Details						
Design Number		Cable Diameter		Installed Dimensions			Nail	Kit	Weight Ea	Kit Weight
Standard	Colour	A (mm)		(mm)			Size	Qty	(g)	(Kg)
		Min	Max	Height	Width	Length				
FPNF02R	Red	7.7	8.5	15	21.6	25.4	17mm	500	8.9	4.5
FPNF02W	White	7.7	8.5	15	21.6	25.4	17mm	500	8.9	4.5
FPNF02R15	Red	7.7	8.5	15	21.6	25.4	15mm	500	8.7	4.45
FPNF02W15	White	7.7	8.5	15	21.6	25.4	15mm	500	8.7	4.45
FPNF04R	Red	8.5	9.0	15	21.6	25.4	17mm	500	8.9	4.5
FPNF04W	White	8.5	9.0	15	21.6	25.4	17mm	500	8.9	4.5
FPNF04R15	Red	8.5	9.0	15	21.6	25.4	15mm	500	8.7	4.45
FPNF04W15	White	8.5	9.0	15	21.6	25.4	15mm	500	8.7	4.45

Nailing tool sold separately. Part No: PULSA800E



Installation

1. Attach adaptor to Pulsa™ tool.
2. Position the FIREFIX™ clip on to the adaptor.
3. Ensure the substrate is clear before pushing the Spit Pulsa™ tool against the substrate, and nailing the clip into position.
4. Place the cable into the clip.
5. Close clip.

FIRE RESISTANT CLEATS