



Elpress PVX1300C2

Battery Operated Crimping Tool

REF NO: PVX1300C2



* 2-YEAR GUARANTEE

IF SERVICE / CALIBRATION IS PERFORMED DURING THE FIRST YEAR (OR MAX. 10,000 CYCLES) AT ONE OF ELPRESS'S AUTHORISED SERVICE STATIONS

FOR SERVICE - CONTACT US:

t: +44 (0)1744 762 929

e: sales@etechcomponents.com

Description

- crimping tool on the next level, the crimping head made from 100% recycled steel

The PVX1300C2 crimp pistol is the latest tool equipped with Elpress's patented DUAL technology. The tool is 100% reverse compatible and has been tested and approved for use together with Elpress B-dies and DUAL dies. One new feature of the pistol is a display that gives you valuable information about your tool, e.g. number of performed crimps, battery status, service intervals, etc. The PVX1300C2 has been created with a new ergonomic design & crimping head that offers you, the user, enhanced performance. The fork is made from 100% recycled steel and has been tested for quality and safety. The tool is supplied with a 2-year guarantee*. There is also the possibility to set a "safety start"*** on the tool.

PVX1300C2 contact crimps:

- Cu conductor 10-400 mm² (400 mm² not with DUAL function)***
- Al conductor 16-400 mm²
- C-sleeves 6-120 mm²

*** DV250 crimping head used for DUAL crimping 400 mm².



New Feature: Display that gives you valuable information about your tool.



Pressure display with battery status.



Safety Function: ** adjustable crimping operation start with optional one or two 'click' trigger for safer handling of the tool.

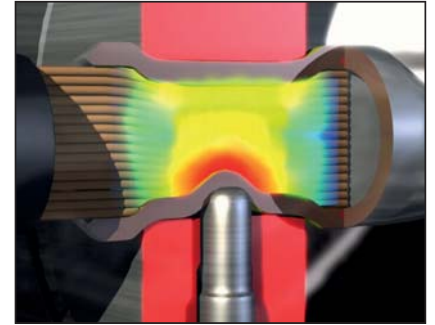
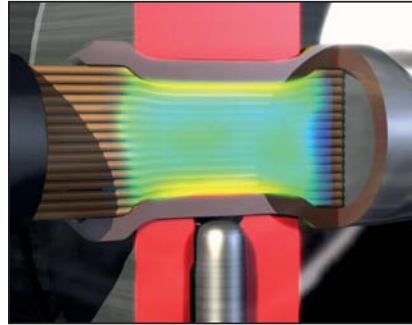
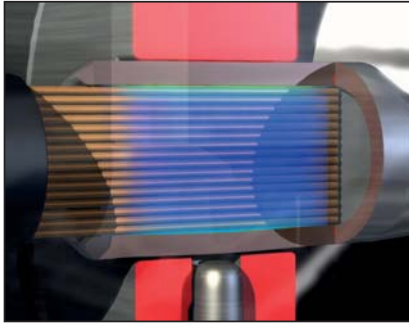


Information on when the next service is due

Elpress DUAL Technology

DUAL technology should be used in particularly severe conditions, such as in trucks, wind power plants and trains, where apart from their electrical properties, the joints are also exposed to corrosion, mechanical resistance and vibrations.

Contact crimping takes place in a two-stage movement, first a hexagonal crimping that provides optimal symmetrical contact with the conductor, which means that no wires are broken or come apart in the edge facing the terminal. This is followed by an additional indent crimp, which provides 30% better electrical properties.



Accessories for crimping flexible Cu-conductors in the DUAL Crimp system DV1300, DV1300C, PVL1300DUAL, PVX1300 and PVX1300C2

DUAL crimp dies

Supplied in pairs.

For crimping of flexible Cu conductors in terminals type KRF or connectors type KSF.

No die holders necessary.



Die pair 13DB20.



Die pair 13DCB20.

mm ²	Dies for DV1300, PVL1300DUAL and PVX1300	Dies for DV1300C and PVX1300C2	No. of crimps
10	13DB8	13DCB8	1
16	13DB9	13DCB9	1
25	13DB11	13DCB11	1
35	13DB13	13DCB13	1
50	13DB14,5	13DCB14,5	1
70	13DB17	13DCB17	1
95	13DB20	13DCB20	1
120	13DB22	13DCB22	2
150	13DB25	13DCB25	2
185	13DB27	13DCB27	2
240	13DB30	13DCB30	2
300	13DB32	13DCB32	2

Accessories for Cu crimping with V1300C, V1311C and PVX1300C2

- Note that KRF terminals may be used on flexible (IEC60228, class 5) as well as stranded (class 2) conductors and that KRD and KRT terminals are used on stranded conductors.
- Be sure to use dies exactly matching the terminal.
- Die holder V1330 is designed to allow crimping of straight as well as angular terminals.

Crimp dies

Supplied as a pair.

For hexagonal crimping of Cu terminals.

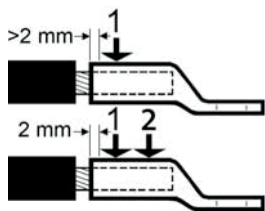
If not otherwise indicated, use die holder V1330.



Die holders V1330 (pair).



B type dies.



One and two crimps.

Cat. no.	Description
V1330	Die holder

KRF/KSF		
mm ²	Dies	No. of crimps
10	B8	1
16	B9	1
25	B11	1
35	B13	1
50	B14,5	1
70	B17	1
95	B20	1
120	B22	1
150	B25	1
185	13CB27*	2
240	13CB30*	2
300	13CB32*	2

* All dies type 13Bxx are used without die holders.

KRD/KSD		
mm ²	Dies	No. of crimps
10	B8	1
16	B8	1
25	B9	1
35	B11	1
50	B12	1
70	B14	1
95	B16	1
120	B19	1
150	B22	1
185	13CB25*	2
240	13CB27*	2
300	13CB30*	2
400	13CB32*	2

* All dies type 13Bxx are used without die holders .

Accessories for Cu crimping with V1300C, V1311C and PVX1300C2

KRT/KST		
mm ²	Dies	No. of crimps
10	B7	1
16	B8,5	1
25	B10	1
35	B12	1
50	B14	1
70	B16	1
95	B18	1
120	B19	1
150	B22	1
185	13CB24*	2
240	13CB26*	2
300	13CB30*	2
400	13CB32*	2

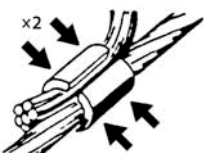
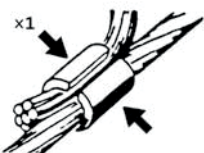
* All dies type 13BXX are used without die holders .

Dies for industrial use, integrated, used without die holders.



Integrated dies 13CB20.

mm ²	Dies for KRF/KSF	No. of crimps
10	13CB8	1
16	13CB9	1
25	13CB11	1
35	13CB13	1
50	13CB14,5	1
70	13CB17	1
95	13CB20	1
120	13CB22	1
150	13CB25	2
185	13CB27	2
240	13CB30	2
300	13CB32	2



One or two crimps.

DIN 46235		
mm ²	Dies	No. of crimps
10	B6DIN	1
16	B8DIN	1
25	B10DIN	1
35	B12DIN	1
50	B14DIN	1
70	B16DIN	1
95	B18DIN	1
120	B20DIN	1
150	B22DIN	1

For oval crimping of Cu branch connectors (C-sleeves).

If not otherwise indicated, use die holder V1330 .



BC type dies.

Main conductor mm ²	Branch mm ²	Dies	No. of crimps
10-6	10-6	BC4**	1
16-10	16-10	BC5	1
25-16	25-16	BC6	1
50-16	50-16	BC8-9	1
70-50	70-25	BC11	1
95-70	95-25	13CBC13*	2
120-95	120-25	13CBC15**	2

* Used without die holders.

** Die nest must be marked C4A to connect 6 mm² main to 6 mm² branch.