

FLEXI LITE POLE MOUNTING TILTING KIT

P/N: 7304

THE FLEXI LITE POLE MOUNTING TILTING KIT

is a modular system providing a wide variety of mounting options on tubes. The Flexi Lite Pole Mounting Tilting Kit ensures a fast and cost effective installation of Flexi Lite BTS systems.

FLEXIBILITY

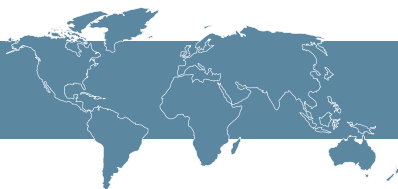
The Flexi Lite Mounting Tilting Kit is a perfect installation base for Nokia Flexi Lite BTS and provides a tilt function of $\pm 45^\circ$.

QUALITY

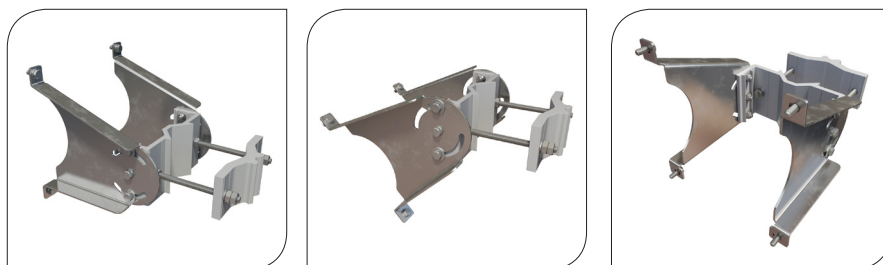
The components are made of high grade anodized aluminium and acid proof stainless steel which gives the support excellent resistance.

EASY ASSEMBLY

The Flexi Lite Pole Mounting Tilting Kit is possible to install on almost any tube and is the "go to" mounting solution for Flexi Lite BTS systems.



Quality Design



TECHNICAL INFORMATION

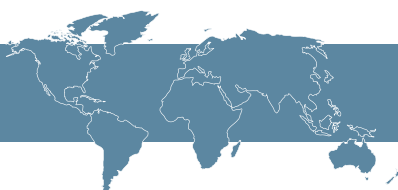
FLEXI LITE POLE MOUNTING TILTING KIT

ORDERING P/N	FUNCTION DESCRIPTION			
7304	A pole mounting bracket kit for installation of a Flexi Lite BTS unit.			
CLAMP MOUNTING RANGE	TUBES			
Minimum: (mm) (inch)	Ø35 (1,4)			
Maximum: (mm) (inch)	Ø120 (4,7)			
MECHANICAL DATA				
Tilting plate:	Acid proof stainless steel EN 1.4404			
Rotation Part:	Nature Anodized 20 µm Aluminum alloy			
Fasteners:	Acid proof stainless steel			
PERFORMANCE				
This pole mount can sustain the weight (14,5 kg) and the wind force (1550 N) at wind speed 60 m/s when the Flexi Lite BTS unit is mounted. Tilt range ±45°				
PACKAGE DIMENSIONS	LENGTH	WIDTH	HEIGHT	WEIGHT
	265 mm (10,4 in)	295 mm (11,6 in)	90 mm (3,5 in)	4 kg (8,8 lb)

The verification is carried out in accordance with relevant parts of:

- EN 755-9:2008 Aluminium and aluminium alloys-Extruded rod/bars, tube and profiles
- EN 1999-1-1:2007 Eurocode 9: Design of aluminium structures – Part 1-1: General structural rules
- EN 1999-1-3:2007 Eurocode9: Design of aluminium structures – Part 1-3: Structures susceptible to fatigue
- EN 1991-1-4:2005 Eurocode1: Actions on structures – Part 1-4: General actions – Wind action

Compliance to ROHS 2 directives 2011/65/EU



Quality Design