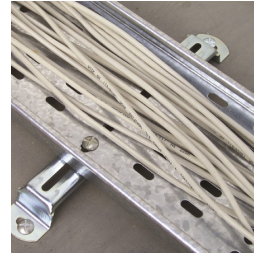
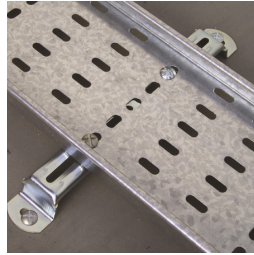
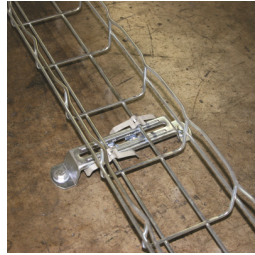
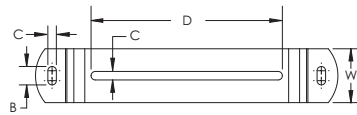
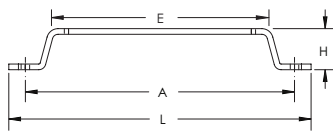


Cable Tray Support Bracket



- Secures wire basket mesh or perforated cable trays to either vertical or horizontal masonry surfaces
- Accommodates cable tray from 50 mm to 450 mm wide
- Includes two M6 adjustable captive nuts and two M6 round bolts for securing perforated tray
- Works with the KBT Wire Basket Tray Clip for securing wire basket cable tray



Material: Steel

Finish: Electrogalvanized

Part Number	Article Number	Height H	Length L	Width W	A	B	C	D	E
ECTB1	175640	25 mm	122 mm	38 mm	96.5 mm	6.5 mm	13 mm	43.0 mm	63.5 mm
ECTB2	175650	25 mm	186 mm	38 mm	160.5 mm	6.5 mm	13 mm	107.0 mm	127.0 mm
ECTB3	175660	25 mm	283 mm	38 mm	257.5 mm	6.5 mm	13 mm	205.0 mm	225.0 mm
ECTB4	175670	25 mm	360 mm	38 mm	333.5 mm	6.5 mm	13 mm	278.5 mm	298.5 mm
ECTB5	175950	25 mm	520 mm	38 mm	494.5 mm	6.5 mm	13 mm	440.0 mm	460.0 mm

WARNING

nVent products shall be installed and used only as indicated in nVent's product instruction sheets and training materials. Instruction sheets are available at www.erico.com and from your nVent customer service representative. Improper installation, misuse, misapplication or other failure to completely follow nVent's instructions and warnings may cause product malfunction, property damage, serious bodily injury and death and/or void your warranty.

© 2018 nVent All rights reserved

nVent, nVent CADDY, nVent ERICO, nVent ERIFLEX and nVent LENTON are owned by nVent or its global affiliates.

All other trademarks are the property of their respective owners. nVent reserves the right to change specifications without prior notice.