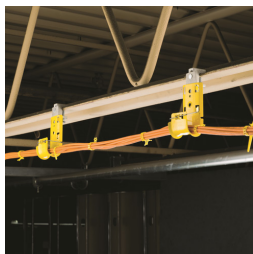
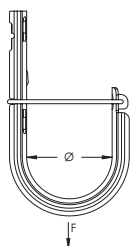


nVent CADDY Cat HP J-Hook



nVent CADDY Cat HP J-Hooks are the heart of the nVent CADDY Cat HP System. The J-Hooks have a wide base design and smooth beveled edges to provide a large bending radius for current and future high-performance data cables and fibre optics. nVent CADDY Cat HP J-Hooks are available in a wide range of sizes to offer a solution that meets industry standards for Cat 6A and easily accommodates Cat 7, large-diameter fibre optic, innerduct and coax cable. Individual nVent CADDY Cat HP J-Hooks can be fastened directly to the building structure or can be used to expand existing nVent CADDY Cat HP J-Hook cable supports. The J-Hooks are designed to provide a strong and stable pathway support installation.

- Provides optimal support for high-performance data cable, up to and including Cat 5e, Cat 6, Cat 6A, Cat 7 and fibre optic
- Rounded edges on J-Hooks provide proper bend radius support for high performance data cables
- Multiple color options aid in the identification and organization of the pathway application
- Provides superior fill capacity and load rating over most other non-continuous cable support alternatives
- Compliant with UL® 2043 and suitable for use in air handling (plenum) spaces
- Tested according to DIN 4102-12
- Complies with EN 50174-2
- Meets ISO®/IEC 14763-2, ANSI®/TIA 568 and ANSI®/TIA 569
- Painted J-Hooks are low-smoke and halogen-free



Material: Steel



Part Number	Article Number	Diameter Ø	Area	Cable Capacity, Cat 5e	Cable Capacity, Cat 6	Cable Capacity, Cat 6A	Static Load F
Finish: Pregalvanized							
CAT16HP	181061	25.0 mm	690 mm ²	20	15	10	270 N
CAT21HP	181188	33.3 mm	1,174 mm ²	50	40	25	270 N
CAT32HP	181062	50.0 mm	2,561 mm ²	90	60	35	270 N
CAT48HP	181063	75.0 mm	5,974 mm ²	200	150	80	270 N
CAT64HP	181064	100.0 mm	9,987 mm ²	330	220	140	270 N
Finish: Pregalvanized, Painted – Color: Black							
CAT16HPBA	181255	25.0 mm	690 mm ²	20	15	10	270 N
CAT21HPBA	181185	33.3 mm	1,174 mm ²	50	40	25	270 N
CAT32HPBA	181115	50.0 mm	2,561 mm ²	90	60	35	270 N
CAT48HPBA	181125	75.0 mm	5,974 mm ²	200	150	80	270 N
CAT64HPBA	181135	100.0 mm	9,987 mm ²	330	220	140	270 N

Part Number	Article Number	Diameter Ø	Area	Cable Capacity, Cat 5e	Cable Capacity, Cat 6	Cable Capacity, Cat 6A	Static Load F
Finish: Pregalvanized, Painted – Color: Blue							
CAT16HPBU	181252	25.0 mm	690 mm ²	20	15	10	270 N
CAT21HPBU	181182	33.3 mm	1,174 mm ²	50	40	25	270 N
CAT32HPBU	181112	50.0 mm	2,561 mm ²	90	60	35	270 N
CAT48HPBU	181122	75.0 mm	5,974 mm ²	200	150	80	270 N
CAT64HPBU	181132	100.0 mm	9,987 mm ²	330	220	140	270 N
Finish: Pregalvanized, Painted – Color: Green							
CAT16HPGR	181256	25.0 mm	690 mm ²	20	15	10	270 N
CAT21HPGR	181186	33.3 mm	1,174 mm ²	50	40	25	270 N
CAT32HPGR	181116	50.0 mm	2,561 mm ²	90	60	35	270 N
CAT48HPGR	181126	75.0 mm	5,974 mm ²	200	150	80	270 N
CAT64HPGR	181136	100.0 mm	9,987 mm ²	330	220	140	270 N
Finish: Pregalvanized, Painted – Color: Orange							
CAT16HPOR	181257	25.0 mm	690 mm ²	20	15	10	270 N
CAT21HPOR	181187	33.3 mm	1,174 mm ²	50	40	25	270 N
CAT32HPOR	181117	50.0 mm	2,561 mm ²	90	60	35	270 N
CAT48HPOR	181127	75.0 mm	5,974 mm ²	200	150	80	270 N
CAT64HPOR	181137	100.0 mm	9,987 mm ²	330	220	140	270 N
Finish: Pregalvanized, Painted – Color: Red							
CAT16HPRD	181251	25.0 mm	690 mm ²	20	15	10	270 N
CAT21HPRD	181181	33.3 mm	1,174 mm ²	50	40	25	270 N
CAT32HPRD	181111	50.0 mm	2,561 mm ²	90	60	35	270 N
CAT48HPRD	181121	75.0 mm	5,974 mm ²	200	150	80	270 N
CAT64HPRD	181131	100.0 mm	9,987 mm ²	330	220	140	270 N
Finish: Pregalvanized, Painted – Color: White							
CAT16HPWH	181253	25.0 mm	690 mm ²	20	15	10	270 N
CAT21HPWH	181183	33.3 mm	1,174 mm ²	50	40	25	270 N
CAT32HPWH	181113	50.0 mm	2,561 mm ²	90	60	35	270 N
CAT48HPWH	181123	75.0 mm	5,974 mm ²	200	150	80	270 N
CAT64HPWH	181133	100.0 mm	9,987 mm ²	330	220	140	270 N
Finish: Pregalvanized, Painted – Color: Yellow							
CAT16HPYL	181254	25.0 mm	690 mm ²	20	15	10	270 N
CAT21HPYL	181184	33.3 mm	1,174 mm ²	50	40	25	270 N
CAT32HPYL	181114	50.0 mm	2,561 mm ²	90	60	35	270 N
CAT48HPYL	181124	75.0 mm	5,974 mm ²	200	150	80	270 N
CAT64HPYL	181134	100.0 mm	9,987 mm ²	330	220	140	270 N

Cable	Number of Twisted Pairs	AWG	Cable Diameter	Capacity [70% fill]			
				CAT16HP	CAT32HP	CAT48HP	CAT64HP
UTP	4	24	5 mm	20	70	160	280
FTP	4	24	6 mm	15	50	110	190
SFTP	4	24	6 mm	15	50	110	190
SFTP	4	23	7 mm	10	40	85	140
F/STP	4	23	8,5 mm	7	25	60	100

Cable	Number of Twisted Pairs	AWG	Cable Diameter	Capacity (70% fill)			
				CAT16HP	CAT32HP	CAT48HP	CAT64HP
SFTP	4	23	8,5 mm	7	25	60	100
SFTP	3x4	24	14 mm	2	9	20	35
UTP	25	24	13 mm	3	11	25	40

Non-continuous supports may not exceed spacing of 5' (1.5 m) per TIA 569-C.9.7 and EN 50174-2.
Cable capacity is calculated based on a 70% fill rate.

ANSI is a registered trademark of American National Standards Institute. ISO is a registered trademark of International Organization for Standardization. UL, UR, cUL, cUR, cULus and cURus are registered certification marks of UL LLC.

WARNING

nVent products shall be installed and used only as indicated in nVent's product instruction sheets and training materials. Instruction sheets are available at www.erico.com and from your nVent customer service representative. Improper installation, misuse, misapplication or other failure to completely follow nVent's instructions and warnings may cause product malfunction, property damage, serious bodily injury and death and/or void your warranty.

© 2018 nVent All rights reserved

nVent, nVent CADDY, nVent ERICO, nVent ERIFLEX and nVent LENTON are owned by nVent or its global affiliates.

All other trademarks are the property of their respective owners. nVent reserves the right to change specifications without prior notice.

