

Your representation:

**etech**  
components

All Enquiries:

tel: +44 (0)1744 762 929

email: sales@etechcomponents.com

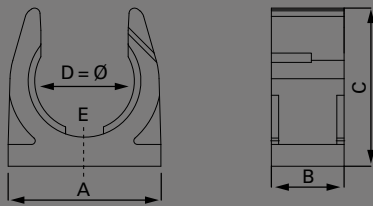
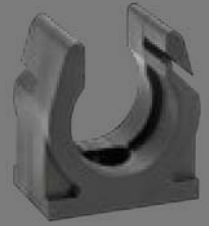
web: www.etechcomponents.com

**FIP SPLIT**<sup>®</sup>

**2CNPA**

Befestigungsclip  
Mounting clip

+120 °C  
-45 °C



**Material: PA6 SGA MOD BS**

- ▣ Standard-Montagehalter für FIP SPLIT Wellrohre
- ▣ aus speziell modifiziertem PA6
- ▣ Schlitze zur Anbringung eines Kabelbinders bei erhöhter Belastung

**Material: PA6 SGA MOD BS**

- ▣ standard mounting clip for FIP SPLIT corrugated conduits
- ▣ made of specially modified PA6
- ▣ slit for cable tie application for reinforced loads



Artikel-Nr. Part No.		Nennweite Nominal width	Dimensionen in mm (nom.) Dimensions in mm (nom.)					VPE PU
schwarz / black	grau / grey	NW	A	B	C	D	E	m
2CNPA-07B.10	2CNPA-07G.10	07	15,0	20,0	17,5	9,7	M3	10
2CNPA-10B.10	2CNPA-10G.10	10	18,5	20,0	17,5	13,5	M5	10
2CNPA-11B.10	2CNPA-11G.10	11	21,0	20,0	22,5	16,0	M3	10
2CNPA-14B.10	2CNPA-14G.10	14	24,0	20,0	27,5	18,7	M5	10
2CNPA-16B.10	2CNPA-16G.10	16	30,0	20,0	35,0	21,6	M6	10
2CNPA-20B.10	2CNPA-20G.10	20	35,0	20,0	38,0	26,0	M6	10
2CNPA-23B.10	2CNPA-23G.10	23	41,6	20,0	43,0	31,3	M6	10
2CNPA-29B.10	2CNPA-29G.10	29	48,0	20,0	50,5	35,3	M6	10
2CNPA-37B.10	2CNPA-37G.10	37	56,0	20,0	56,6	41,8	M6	10
2CNPA-45B.10	2CNPA-45G.10	45	67,0	20,0	68,0	54,0	M6	10
2CNPA-70B.10	2CNPA-70G.10	70	100,0	20,0	100,0	79,8	M6	10

