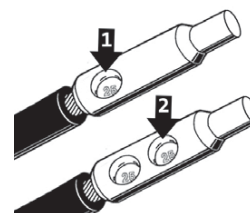
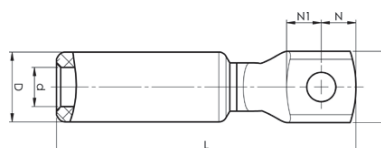


## Aluminium-copper terminals 300 - 400 mm<sup>2</sup>

- Used for connection of Al conductors for apparatus outlets and busbars of Cu, etc.
- For stranded wire Al conductor.
- Two crimps are needed, see image.



Crimp sequence

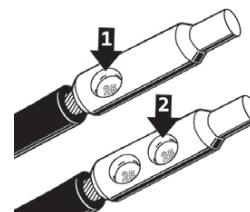
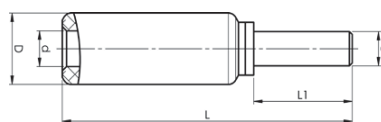
Stranded Al mm <sup>2</sup>	AWG/ MCM	Name	Screw	W mm	d	D	N	N1	L	t	s	Tool	Pcs/ pack
300	600	AKK300B-12	M12	37	22,3	37	18,5	18,5	139	6,7	68	V1300, V250	6
300	600	AKK300B-16	M16	37	22,3	37	18,5	18,5	139	6,7	68	V1300, V250	6
400	750	AKK400B-12	M12	37	25	37	18,5	18,5	139	6,7	68	V1300, V250	6
400	750	AKK400B-16	M16	37	25	37	18,5	18,5	139	6,7	68	V1300, V250	6

t = palm thickness, s = strip length

05

## Aluminium-copper pin sockets 16 - 300 mm<sup>2</sup>

- Used for connection of Al conductors to apparatus with copper connectors.
- Two crimps are needed - For crimp sequence, see image.



Crimp sequence

Stranded Al mm <sup>2</sup>	Solid Al mm <sup>2</sup>	AWG/ MCM	AWG Al (Solid Al)	Name	d mm	D	e	L	L1	s	Tool	Pcs/ pack
16	25 (16)	6	4	AKP16	5,9	13	6	56	25	29	V600, V1300, V250	48
25	35	4	2	AKP25	6,8	13	6	56	25	29	V600, V1300, V250	48
35	50	2	1/0	AKP35	8,5	20	9	78	25	45	V1300, V250	24
50	70	1/0	2/0	AKP50	9,6	20	9	88	35	45	V1300, V250	24
70	95	2/0	4/0	AKP70	11,3	20	9	88	35	45	V1300, V250	24
95	120	4/0	250	AKP95	12,5	25	12	103	35	60	V1300, V250	24
120	150	250	300	AKP120	14	25	12	108	40	60	V1300, V250	24
150	185	300	350	AKP150	15,8	25	12	108	40	60	V1300, V250	24
185	240	350	500	AKP185	17,6	32	14	113,5	45	61	V1300, V250	12
240		500		AKP240	19,8	32	14	113,5	45	61	V1300, V250	12
300		600		AKP300	22	36	16	142	50	83	V250	9

s = strip length