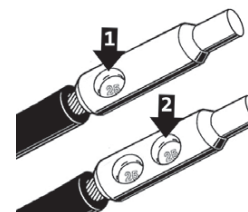
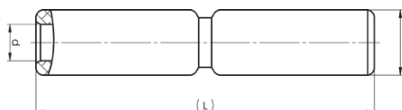


Aluminium through connectors with partition 16 - 1200 mm²

- Used primarily for connecting two Al conductors with the same area.
- Two plus two crimps are needed - For crimp sequence, see image.
- Partition in the middle to prevent fluid flow.



Crimp sequence

Stranded Al mm ²	Solid Al mm ²	AWG Al (Stranded Al)	AWG Al (Solid Al)	Name	d mm	D	L	s	Tool	Pcs/pack
16-25		6-4		AS1625	6,2	11,5	35	18	V600	50
16	25	6	4	AS16	5,9	13	67	29	V600, V1300, V250	48
25	35	4	2	AS25	6,8	13	67	29	V600, V1300, V250	48
35	50	2	1/0	AS35	8,5	20	100	45	V1300, V250	24
50	70	1/0	2/0	AS50	9,6	20	100	42,5	V1300, V250	24
70	95	2/0	3/0	AS70	11,3	20	100	42,5	V1300, V250	24
95	120	3/0	250	AS95	12,5	25	130	57	V1300, V250	12
120	150	250	300	AS120	14	25	130	57	V1300, V250	12
150	185	300	350	AS150	15,8	25	130	58	V1300, V250	12
185	240	350	500	AS185	17,6	32	131	58	V1300, V250	9
240		500		AS240	19,8	32	131	58	V1300, V250	9
	300		600	AS300SOLID	20	36	177	83	V250	6
300		600		AS300	22	36	177	83	V250	3
400		750		AS400	25	40	179	83	V250	3
	400		750	AS400SOLID	23	40	179	83	V250	3
500		1000		AS500A	28	52	250	110	V250	3
500		1000		AS500B	28	44	184	83	V250	3
630		1250		AS630A-1	32	52	250	110	V250	1
630		1250		AS630A-2	34	52	250	110	V250	1
800		1600		AS800-1	36	60	288	129	V1470	1
1000		2000		AS1000-1	40	60	288	129	V1470	1
1200		2500		AS1200	44	70	320	142	V1470	1

For other combinations, please contact Elpress. s = strip length