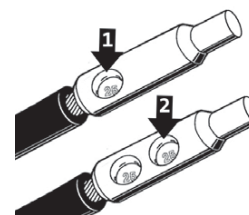
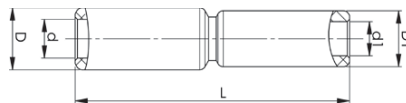


# Through connectors with aluminium partitions with different areas 16 - 400 mm<sup>2</sup>

- Used for connecting Al conductors of different areas.
- Two plus two crimps are needed - crimp sequence see picture.
- With partition.



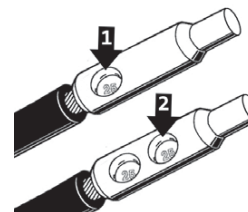
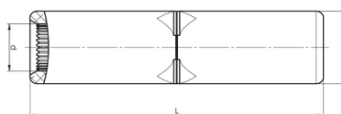
Crimp sequence

Stranded Al mm <sup>2</sup>	Solid Al mm <sup>2</sup>	AWG/MCM	AWG Al (Solid Al)	Name	d mm	d1	D	D1	L	s	s1	Tool	Pcs/pack
25-16	35-25	4-6	2-4	AS25-16	6,8	5,9	13	13	67	29	29	V1300, V250	48
35-25	50-35	2-4	1/0-4	AS35-25	8,5	6,8	20	13	85	45	29	V1300, V250	24
50-25	70-35	1/0-4	2/0-4	AS50-25	9,6	6,8	20	13	85	45	29	V1300, V250	24
50-35	70-50	1/0-2	2/0	AS50-35	9,6	8,5	20	20	100	45	45	V1300, V250	24
70-50	95-70	2/0-1/0	4/0-2/0	AS70-50	11,3	9,6	20	20	100	45	45	V1300, V250	24
95-25	120-35	4/0-4	2-250	AS95-25	12,5	6,8	25	13	101,1	60	29	V1300, V250	24
95-35	120-50	4/0-2	1/0-250	AS95-35	12,5	8,5	25	20	116	60	45	V1300, V250	24
95-50	120-70	3/0-1/0	250-2/0	AS95-50	12,5	9,6	25	20	116,1	60	45	V1300, V250	24
95-70	120-95	4/0-2/0	250-4/0	AS95-70	12,5	11,3	25	20	116,1	60	45	V1300, V250	24
120-95	150-120	250-4/0	300-250	AS120-95	14	12,5	25	25	130	60	60	V1300, V250	12
150-50	185-70	250-1/0	350-2/0	AS150-50	15,8	9,6	25	20	116,1	60	45	V1300, V250	12
150-70	185-95	300-2/0	350-3/0	AS150-70	15,8	11,3	25	20	116,1	60	45	V1300, V250	24
150-95	185-120	300-4/0	350-250	AS150-95	15,8	12,5	25	25	130	60	60	V1300, V250	12
150-120	185-150	300-250	350-300	AS150-120	15,8	14	25	25	130	60	60	V1300, V250	12
185-95	240-120	350-4/0	500-250	AS185-95	17,6	12,5	32	25	131,9	61	60	V1300, V250	12
185-150	240-185	350-300	500-350	AS185-150	17,6	15,8	32	25	131,9	61	60	V1300, V250	12
240-95	120	500-4/0	600-250	AS240-95	19,8	12,5	32	25	132	61	60	V1300, V250	12
240-120	150	500-250	300	AS240-120	19,8	14	32	25	132	61	60	V1300, V250	12
240-150	185	500-300	350	AS240-150	19,8	15,8	32	25	132	61	60	V1300, V250	12
240-185	240	500-350	500	AS240-185	19,8	17,6	32	32	131	61	61	V1300, V250	12
300-240		600-500		AS300-240	22	19,8	36	32	155,1	83	61	V250	6
400-300		750-600		AS400-300	25	22	40	36	179	83	83	V250	3

s, s1 = insulation stripping length

# Aluminium through connectors with cable stop 300 - 400 mm<sup>2</sup>

- Used primarily for connecting two Al conductors with the same area
- For the indent crimping of Al-terminals, two crimps are always required, see image.



Crimp sequence

Stranded Al mm <sup>2</sup>	AWG/MCM	Name	d mm	D	L	s	Tool	Pcs/pack
300	600	AS300B	22,5	37	150	65	V1300, V250	1
400	750	AS400B	25	37	150	64	V1300, V250	1

s = strip length

05