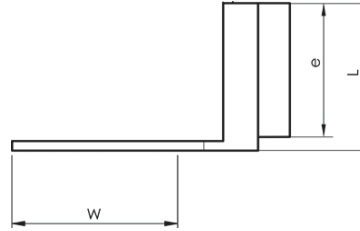


Tab with one male

• Material: brass/Cu, tin plated Cu/Sn.

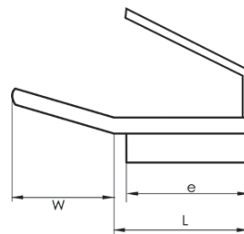
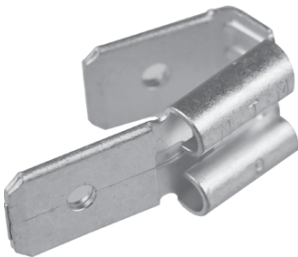


03

Name	W mm	e	L	Tab	Pcs/pack
B07FLS1H	8,5	8	8,5	6,3x0,8	100

Tab with 2 males

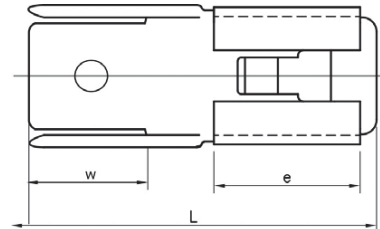
• Material: brass/Cu, tin plated Cu/Sn.



AWG Cu	Name	W mm	e	L	Tab	Pcs/pack
2/0	B07FLS2H	9	7,5	18,5	6,3x0,8	100

Tab with 3 males

• Material: brass/Cu, tin plated Cu/Sn.



Name	W mm	e	L	Tab	Pcs/pack
B07FLS3H	8	7,5	21	6,3x0,8	100