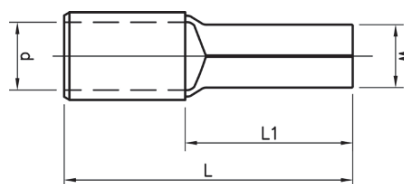
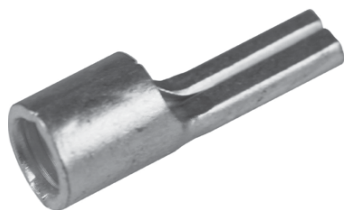


DIN 46230 pin terminals 10 - 95 mm²

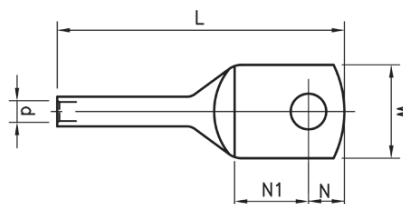
- Material: Cu 99.95%, tin plated Cu/Sn.
- Dimensions according to DIN 46230.



mm ² (Cu)	AWG Cu	Name	W mm	d	L	L1	Tool	Pcs/pack	Die
10	8	B10SR	4,3	4,5	22	12	V600, V1300, V250	100	7
16	6	B16SR	5,5	5,8	26	13	V600, V1300, V250	100	8
25	4	B25SR	6,8	7	34	15	V600, V1300, V250	100	10
35	2	B35SR	8	8,7	41	20	V600, V1300, V250	100	12
50	1/0	B50SR	9,5	9,8	45	20	V600, V1300, V250	50	14,5
70	2/0	B70SR	11	11,5	55	23	V600, V1300, V250	50	17
95	3/0	B95SR	12,3	13,8	55	23	V600, V1300, V250	50	20

KRX tube terminals for Excel and Fxcel cable 10 - 16 mm²

- Material: Cu 99.95%, tin plated Cu/Sn
- For cable 10 mm² Cu Solid (Excel) and 16 mm² stranded (Fxccl), installed with strain relief.

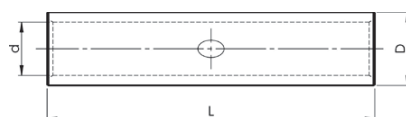


mm ² (Cu)	AWG Cu	Name	Screw	W mm	d	N	N1	L	t	s	Tool	Pcs/pack	Die
10	8	KRX10-8	M8	22	4,5	8,5	17,5	68	3,5	30	V600, V1300	3	7
10	8	KRX10-10	M10	22	4,5	11,5	18,5	72	3,5	30	V600, V1300	3	7
10	8	KRX10-12	M12	22	4,5	12,5	19,5	74	3,5	30	V600, V1300	3	7
16	6	KRX16-8	M8	16	5,5	8,5	17,5	61	2,2	30	V600, V1300	3	8,5
16	6	KRX16-10	M10	16	5,5	11,5	18,5	65	2,2	30	V600, V1300	3	8,5
16	6	KRX16-12	M12	19	5,5	12,5	19,5	67	1,9	30	V600, V1300	3	8,5

t = palm thickness, s = strip length

KSX through connectors for Excel and Fxcel cable 10 - 16 mm²

- Material: Cu 99.95%, tin plated Cu/Sn
- For cable 10 mm² Cu Solid (Excel) and 16 mm² stranded (Fxccl), installed with strain relief.
- With internal cable stop



mm ² (Cu)	AWG Cu	Name	d mm	D	L	s	Tool	Pcs/pack	Die
10	8	KSX10	4,5	7	65	30	V600, V1300	3	7
16	6	KSX16	5,5	8,5	65	30	V600, V1300	3	8,5

s = strip length

The Elpress logo is included on the marking. Two plus two crimps are carried out with the V600, V611, PVX611 or T2600 system, crimp die TB7-20.