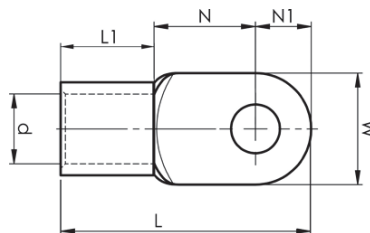


DIN 46234 sheet metal terminals 10 - 185 mm²

- Material: Cu 99.9% tin plated Cu/Sn.
- Dimensions acc. to DIN 46234.



| mm ² (Cu) | AWG Cu | Name | Screw | W mm | d | N | N1 | L | Tool | Pcs/ pack | Die |
|-------------------------|-----------|----------|-------|---------|------|----|-----|----|----------------------------|--------------|------|
| 10 | 8 | B10-5R | M5 | 10 | 4,5 | 8 | 5 | 16 | GWB4010, V600, V1300, V250 | 100 | 7 |
| 10 | 8 | B10-6R | M6 | 11 | 4,5 | 9 | 5,5 | 17 | GWB4010, V600, V1300, V250 | 100 | 7 |
| 10 | 8 | B10-8R | M8 | 14 | 4,5 | 12 | 7 | 27 | GWB4010, V600, V1300, V250 | 100 | 7 |
| 10 | 8 | B10-10R | M10 | 18 | 4,5 | 13 | 9 | 21 | GWB4010, V600, V1300, V250 | 100 | 7 |
| 10 | 8 | B10-12R | M12 | 22 | 4,5 | 15 | 11 | 23 | GWB4010, V600, V1300, V250 | 100 | 7 |
| 16 | 6 | B16-5R | M5 | 11 | 5,8 | 10 | 5,5 | 26 | V600, V1300, V250 | 100 | 8 |
| 16 | 6 | B16-6R | M6 | 11 | 5,8 | 10 | 5,5 | 26 | V600, V1300, V250 | 100 | 8 |
| 16 | 6 | B16-8R | M8 | 14 | 5,8 | 12 | 7 | 29 | V600, V1300, V250 | 100 | 8 |
| 16 | 6 | B16-10R | M10 | 18 | 5,8 | 14 | 9 | 33 | V600, V1300, V250 | 100 | 8 |
| 16 | 6 | B16-12R | M12 | 22 | 5,8 | 16 | 11 | 37 | V600, V1300, V250 | 100 | 8 |
| 16 | 6 | B16-16R | M16 | 30 | 5,8 | 24 | 15 | 49 | V600, V1300, V250 | 100 | 8 |
| 25 | 4 | B25-6R | M6 | 12 | 7,5 | 14 | 6 | 31 | V600, V1300, V250 | 100 | 10 |
| 25 | 4 | B25-8R | M8 | 16 | 7,5 | 14 | 8 | 33 | V600, V1300, V250 | 100 | 10 |
| 25 | 4 | B25-10R | M10 | 18 | 7,5 | 15 | 9 | 35 | V600, V1300, V250 | 100 | 10 |
| 25 | 4 | B25-12R | M12 | 22 | 7,5 | 20 | 11 | 42 | V600, V1300, V250 | 100 | 10 |
| 25 | 4 | B25-16R | M16 | 28 | 7,5 | 24 | 14 | 49 | V600, V1300, V250 | 100 | 10 |
| 35 | 2 | B35-6R | M6 | 15 | 9 | 14 | 7,5 | 34 | V600, V1300, V250 | 100 | 12 |
| 35 | 2 | B35-8R | M8 | 16 | 9 | 14 | 8 | 34 | V600, V1300, V250 | 100 | 12 |
| 35 | 2 | B35-10R | M10 | 18 | 9 | 15 | 9 | 36 | V600, V1300, V250 | 100 | 12 |
| 35 | 2 | B35-12R | M12 | 22 | 9 | 19 | 11 | 42 | V600, V1300, V250 | 100 | 12 |
| 35 | 2 | B35-16R | M16 | 28 | 9 | 24 | 14 | 50 | V600, V1300, V250 | 100 | 12 |
| 50 | 1/0 | B50-6R | M6 | 18 | 11 | 18 | 9 | 43 | V600, V1300, V250 | 100 | 14,5 |
| 50 | 1/0 | B50-8R | M8 | 18 | 11 | 18 | 9 | 43 | V600, V1300, V250 | 100 | 14,5 |
| 50 | 1/0 | B50-10R | M10 | 18 | 11 | 18 | 9 | 43 | V600, V1300, V250 | 100 | 14,5 |
| 50 | 1/0 | B50-12R | M12 | 22 | 11 | 20 | 11 | 47 | V600, V1300, V250 | 100 | 14,5 |
| 50 | 1/0 | B50-16R | M16 | 28 | 11 | 24 | 14 | 54 | V600, V1300, V250 | 100 | 14,5 |
| 70 | 2/0 | B70-8R | M8 | 22 | 13 | 20 | 11 | 49 | V600, V1300, V250 | 100 | 17 |
| 70 | 2/0 | B70-10R | M10 | 22 | 13 | 20 | 11 | 49 | V600, V1300, V250 | 100 | 17 |
| 70 | 2/0 | B70-12R | M12 | 22 | 13 | 20 | 11 | 49 | V600, V1300, V250 | 100 | 17 |
| 70 | 2/0 | B70-16R | M16 | 28 | 13 | 24 | 14 | 56 | V600, V1300, V250 | 100 | 17 |
| 95 | 4/0 | B95-10R | M10 | 24 | 15 | 22 | 12 | 54 | V600, V1300, V250 | 100 | 20 |
| 95 | 4/0 | B95-12R | M12 | 24 | 15 | 22 | 12 | 54 | V600, V1300, V250 | 100 | 20 |
| 95 | 4/0 | B95-16R | M16 | 28 | 15 | 24 | 14 | 58 | V600, V1300, V250 | 100 | 20 |
| 120 | 250 | B120-10R | M10 | 24 | 16,5 | 22 | 12 | 56 | V600, V1300, V250 | 50 | * |
| 120 | 250 | B120-12R | M12 | 24 | 16,5 | 22 | 12 | 56 | V600, V1300, V250 | 50 | * |
| 120 | 250 | B120-16R | M16 | 28 | 16,5 | 26 | 14 | 62 | V600, V1300, V250 | 50 | * |
| 150 | 300 | B150-12R | M12 | 30 | 19 | 26 | 15 | 65 | V600, V1300, V250 | 50 | * |
| 150 | 300 | B150-16R | M16 | 30 | 19 | 26 | 15 | 65 | V600, V1300, V250 | 50 | * |
| 185 | 350 | B185-12R | M12 | 36 | 21 | 22 | 18 | 68 | V1300, V250 | 50 | * |
| 185 | 350 | B185-16R | M16 | 36 | 21 | 22 | 18 | 68 | V1300, V250 | 50 | * |

* Contact Elpress