

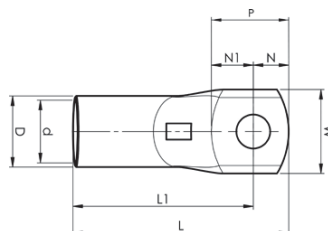
# KRFS tube terminals with narrow palm 50 - 400 mm<sup>2</sup>

- Material: Cu 99.95%, tin plated Cu/Sn.
- Inspection hole
- For stranded (class 2) and multi-stranded (class 5) Cu conductors.
- For multi-stranded Cu conductors Elpress recommends the DUAL system.
- Easy to install via cable gland, allows for pre-installation.
- The width of the palm is less than or as wide as the neck.
- UL-approved, DNV approved.



## Example of marking KRFS: 17 (neck) Elpress logotype 70 10F (palm)

17 = Die no. 70 = mm<sup>2</sup> 10 = palm hole for M10 F = type KRF for stranded and flexible conductors.



04

mm <sup>2</sup> (Cu)	AWG Cu	Name	Screw	W mm	d	D	N	N1	P	L	L1	t	s	Tool	Pcs/pack	Die
50	1/0	KRFS50-6	M6	15	11	14,5	11	11,5	22,5	51	40	4	19	PVL350, V600, DV1300, DV250	100	14,5
50	1/0	KRFS50-8	M8	16,5	11	14,5	11	11,5	22,5	51	40	3,8	19	PVL350, V600, DV1300, DV250	100	14,5
50	1/0	KRFS50-10	M10	16,5	11	14,5	11	12,5	23,5	52	41	3,8	19	PVL350, V600, DV1300, DV250	100	14,5
70	2/0	KRFS70-6	M6	17	13	17	11	12,5	23,5	58	47	4,5	22	PVL350, V600, DV1300, DV250	50	17
70	2/0	KRFS70-8	M8	17	13	17	11	12,5	23,5	58	47	4,5	22	PVL350, V600, DV1300, DV250	50	17
70	2/0	KRFS70-10	M10	19	13	17	11	12,5	23,5	58	47	3,9	22	PVL350, V600, DV1300, DV250	50	17
95	4/0	KRFS95-6	M6	19	15	20	11	14	25	63	52	5,7	25	V600, DV1300, DV250	50	20
95	4/0	KRFS95-8	M8	19	15	20	11	14	25	63	52	5,7	25	V600, DV1300, DV250	50	20
95	4/0	KRFS95-10	M10	19	15	20	11	14	25	63	52	5,7	25	V600, DV1300, DV250	50	20
95	4/0	KRFS95-12	M12	20	15	20	12	15	27	64	52	5,4	25	V600, DV1300, DV250	50	20
120	250	KRFS120-6	M6	19	17	22	11	13,5	24,5	67	56	5,9	27	V600, DV1300, DV250	25	22
120	250	KRFS120-8	M8	19	17	22	11	13,5	24,5	67	56	5,9	27	V600, DV1300, DV250	25	22
120	250	KRFS120-10	M10	19	17	22	11	13,5	24,5	67	56	5,9	27	V600, DV1300, DV250	25	22
120	250	KRFS120-12	M12	22	17	22	12	15	27	70	58	5	27	V600, DV1300, DV250	25	22
150	300	KRFS150-6	M6	25	19	25	11	14	25	74	63	6,3	32	V600, DV1300, DV250	25	25
150	300	KRFS150-8	M8	25	19	25	11	14	25	74	63	6,3	32	V600, DV1300, DV250	25	25
150	300	KRFS150-10	M10	25	19	25	11	14	25	74	63	6,3	32	V600, DV1300, DV250	25	25
150	300	KRFS150-12	M12	25	19	25	12	15	27	76	64	6,3	32	V600, DV1300, DV250	25	25
185	350	KRFS185-10	M10	27	21	27	11	13	24	79	68	6,6	37	DV1300, DV250	20	27
185	350	KRFS185-12	M12	27	21	27	12	15	27	82	70	6,6	37	DV1300, DV250	20	27
240	500	KRFS240A-10	M10	29	22,5	29	15	19	34	91	76	7,7	37	DV1300, DV250	10	30
240	500	KRFS240A-12	M12	29	22,5	29	15	19	34	91	76	7,7	37	DV1300, DV250	10	30
240	500	KRFS240A-16	M16	29	22,5	29	20	19	39	96	76	7,7	37	DV1300, DV250	10	30
300	600	KRFS300A-10	M10	31	24,5	31,5	15	19	34	94	79	8,6	40	DV1300, DV250	10	32
300	600	KRFS300A-12	M12	31	24,5	31,5	15	19	34	94	79	8,6	40	DV1300, DV250	10	32
300	600	KRFS300A-16	M16	31	24,5	31,5	20	19	39	99	79	8,6	40	DV1300, DV250	10	32
400	800	KRFS400A-12	M12	38	30	38	15	24	39	114	99	8,8	52	DV1300, DV250	10	38
400	800	KRFS400A-16	M16	38	30	38	20	39	39	114	94	8,8	52	DV1300, DV250	10	38

t = palm thickness, s = strip length



Easy to install via cable gland.