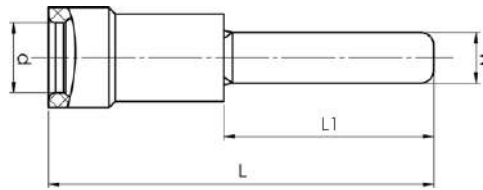


Blade terminals 0.25 - 6 mm²

- Material: Cu 99.95%, tin plated Cu/Sn, brazed neck.
- PC insulation has easy-entry, PC is halogen free.

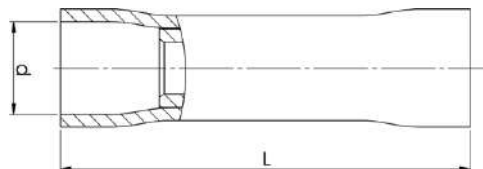


mm ² (Cu)	AWG Cu	Name	W mm	d mm	L	L1	t	s	Insulation material	Easy Entry	Tab	Tool	Pcs/pack
0,25-0,75	24-20	A08255FK	2,5	3,2	20	10	0,5	7	PC	Yes	No	DSA0115	100
0,5-1,5	20-16	A1518SFL	2,3	4,0	27,2	18	0,8	7	PVC	Yes	No	GSA0760	100
0,5-1,5	20-16	A1529SF	2,9	4	22	12	0,7	7	PC	Yes	No	GSA0760	100
0,5-1,5	20-16	A1529SFN	2,9	4	22	12	0,7	7	PC	Yes	Yes	GSA0760	100
0,5-1,5	20-16	A1530SFB	3	4	25,8	16,8	0,8	7	PVC	Yes	No	GSA0760	100
1,5-2,5	16-14	A2524SFL	2,3	4,5	27,2	18	0,8	8	PVC	Yes	No	GSA0760	100
1,5-2,5	16-14	A2529SF	2,9	4,3	21,5	11,5	0,8	8	PC	Yes	No	GSA0760	100
1,5-2,5	16-14	A2529SFN	2,9	4,3	22	12	0,8	8	PC	Yes	Yes	GSA0760	100
1,5-2,5	16-14	A2530SFB	3	4,5	25,8	16,8	0,7	8	PVC	Yes	No	GSA0760	100
4-6	12-10	A4640SF	4	6,8	27,5	13,5	1	9	PVC	Yes	No	GSA0760	100
4-6	12-10	A4645SFB	4,6	6,8	30,3	16,8	1	9	PVC	No	No	GSA0760	100

t = palm thickness, s = strip length

Through connectors 0.25 - 6 mm²

- Material: Cu 99.95%, tin plated Cu/Sn, contact sleeve of Cu pipe
- Halogen-free PC insulation without Easy-entry.



mm ² (Cu)	AWG Cu	Name	d mm	L	s	Tool	Insulation material	Easy Entry	Pcs/pack
0,25-0,75	24-20	A0824SK	2,9	24,5	7	DSA0115	PC	No	100
0,5-1,5	20-16	A1525SK	3,4	24	7	GSA0760	PC	No	100
1,5-2,5	16-14	A2527SK	4,3	26	8	GSA0760	PC	No	100
4-6	12-10	A4652SK	6,5	33	9	GSA0760	PC	No	50

s = strip length