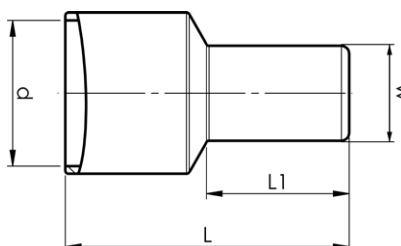


## End connector sleeves fully insulated 1 - 6 mm<sup>2</sup>

- Material: Cu, tin plated Cu/Sn.
- Insulation of halogen-free PA. Easy-entry.

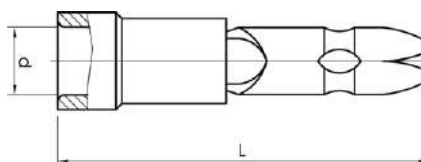


mm <sup>2</sup> (Cu)	AWG Cu	Name	d mm	L	L1	s	Tool	Insulation material	Easy Entry	Pcs/pack
1-3	18-13	A2500E	6,4	15,2	8	8	GSA0760	PA	Yes	100
4-6	12-10	A4600E	9,2	17,7	9	9	GSA0760	PA	Yes	100

s = strip length

## Bullet 0.25 - 6 mm<sup>2</sup>

- Material: brass/Cu, tin plated Cu/Sn.
- PC insulation has easy-entry, PC and PA are halogen-free.

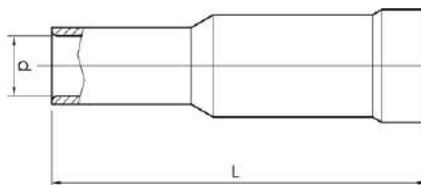


mm <sup>2</sup> (Cu)	AWG Cu	Name	d mm	L	s	Bullet	Tool	Insulation material	Neck type	Easy Entry	Pcs/pack
0,25-0,75	24-20	A0802HA	3,1	26	7	2,0	DSA0115	PA	Reinforcement sleeve	No	100
0,5-1,5	20-16	A1504HA	4	22	7	4,0	GSA0760	PC	Brazed	Yes	100
1,5-2,5	16-14	A2505HA	4,3	20,7	8	5,0	GSA0760	PVC	Reinforcement sleeve	No	100
4-6	12-10	A4605HA	6,6	25,7	9	5,0	GSA0760	PA	Reinforcement sleeve	No	100

s = strip length

## End connector sleeves fully insulated 0.25 - 6 mm<sup>2</sup>

- Material: brass/Cu, tin plated Cu/Sn.
- PC insulation has easy-entry, PC and PA are halogen-free.



mm <sup>2</sup> (Cu)	AWG Cu	Name	d mm	L	s	For bullets	Tool	Insulation material	Neck type	Easy Entry	Material	Pcs/ pack
0,25-0,75	24-20	A0802HO	3,1	24,5	7	2	DSA0115	PA	Reinforcement sleeve	No	Brass/Cu, Cu/Sn	100
0,5-1,5	20-16	A1504HO	4	25	7	4	GSA0760	PC	Brazed	Yes	Tin bronze (phosphor bronze), Cu/Sn	100
1,5-2,5	16-14	A2505HO	3,2	25	8	5	GSA0760	PVC	Reinforcement sleeve	No	Brass/Cu, Cu/Sn	100
4-6	12-10	A4605HO	5,7	27	9	5	GSA0760	PA	Reinforcement sleeve	No	Brass/Cu, Cu/Sn	100

s = strip length