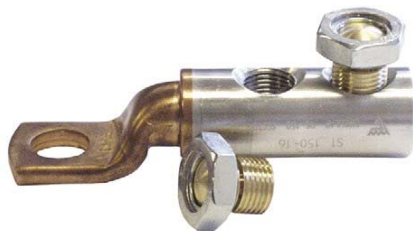


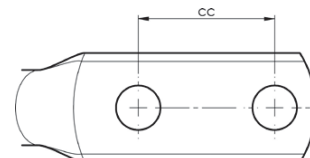
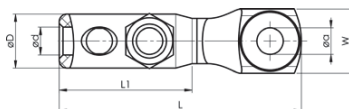
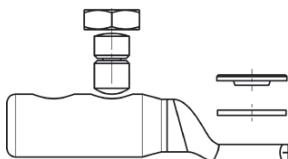
Shearbolt terminals 10 - 630 mm² (reversible screw)

Properties:

- screw material: brass for minimum friction
- reversible shear-off screws
- voltage range: 1 kV to 36 kV
- meets the requirements of standard IEC 61238-1
- the terminals are of the bimetallic type for best functionality



Shearbolt terminal



Cable type round mm ²	Cable type sector mm ²	Name	Screen conductor	Screw	W mm	d	D	N	cc	a	L	L1
10-70	25-70	SL70R70S-10-12	10-57	M10, M12	25,5	11,0	21	12,5	12	97	59	
95-150	95	SL150R95S-10-12	70-95	M10, M12	26	16	27	12,5	12	116	75,5	
95-150	95	SL150R95S-12X2-40	70-95	M12x2	30,5	16	27	15	40	12	172	75,5
185-240	120-185	SL240R185S-12-16		M12, M16	31,5	20	33,5	15		16	134	78,5
300-400	240	SL400R240S-16		M16	41,5	25,8	41,5	21		16	182	103
300-400	240	SL400R240S-20		M20	41,5	25,8	41,5	21		20	182	103
300-400	240	SL400R240S-00			41,5	33	49				187	103
500-630		SL500B-630B-12X2-40		M12x2	55	33	49	12	40	12	218	115
500-630		SL630R-1			55	33	49				243	129
500-630		SL630R-16		M16	55	33	49	30		16	241,5	129
500-630		SL630R-14		M14	55	33	49	30		14	243	129
500-630		SL630R-12X2-40		M12x2	55	33	49	15	40	12	243	129

t = palm thickness, s = strip length

80

Screw branch clamps

Screw clamps for earthing applications. Enables branching of reinforcing bars with a stranded earth line in Cu or Fe.



Name	Pcs/pack
SBC50	1

Counterhold tool

Counterhold tool for stable and safe installation of shearbolt terminals. Tools are made from durable material and are easily adjustable for terminals up to 400 mm².



ISL2201

Name	Pcs/pack
ISL2201	1