



KRF[®] Two Hole Cable Lugs

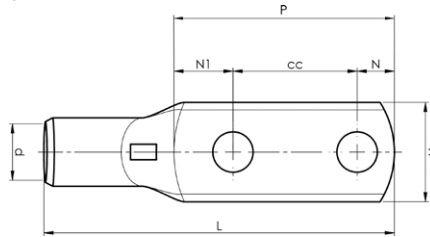


KRF[®] tube terminals with two holes 16 - 400 mm²

- Material: Cu 99.95%, tin plated Cu/Sn.
- Inspection hole
- For stranded (class 2) and multi-stranded (class 5) Cu conductors.
- For multi-stranded Cu conductors Elpress recommends the DUAL system.
- UL approved (16-400 mm²), DNV approved (see note).

Example of marking KRF: 17 (neck) Elpress logotype 70 10F (palm)

17 = Die No. 70 = mm² 10 = palm hole for M10 F = type KRF for stranded and flexible conductors.



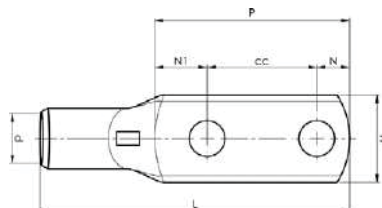
mm ² (Cu)	AWG Cu	Name	Screw	W mm	d	N	N1	P	cc	L	t	s	Tool	Pcs/ pack	Die	Note
16	6	KRF16-6X2-16	M6x2	13	6	6,5	8,5	31	16	50	2,8	11	PVL350, V600, DV1300, V250	100	9	
16	6	KRF16-10X2-40	M10x2	16	6	11	11	62	40	81	2,2	11	PVL350, V600, DV1300, V250	100	9	
16	6	KRF16-10X2-24-26	M10x2	16	6	11	19	55	25	75	2,2	11	PVL350, V600, DV1300, V250	100	9	
25	4	KRF25-6X2-16	M6x2	16	8	6,5	8,5	31	16	54	2,9	13	PVL350, V600, DV1300, V250	100	11	
25	4	KRF25-8X2-40	M8x2	16	8	9,5	10,5	60	40	81	2,8	13	PVL350, V600, DV1300, V250	100	11	
25	4	KRF25-10X2-40	M10x2	18	8	11	19	70	40	93	2,5	14	PVL350, V600, DV1300, V250	100	11	
25	4	KRF25-14X2-40	M14x2	22	8	15	17	72	40	94	1,8	13	DV1300, V250, V600, PVL350	100	11	
35	2	KRF35-10X2-24-26	M10x2	18	9	11	16	52	25	78	3,9	16	PVL350, V600, DV1300, DV250	100	13	
35	2	KRF35-10X2-40	M10x2	20	9	11	19	70	40	95	3,5	16	PVL350, V600, DV1300, DV250	100	13	
50	1/0	KRF50-10X2-24-26	M10x2	21	11	11	16	52	25	82	3,4	19	PVL350, V600, DV1300, DV250	100	14,5	
50	1/0	KRF50-10X2-40	M10x2	21	11	11	19	70	40	100	3,3	19	PVL350, V600, DV1300, DV250	100	14,5	
70	2/0	KRF70-10X2-24-26	M10x2	25	13	11	17	53	25	86	3,9	22	PVL350, V600, DV1300, DV250	50	17	
70	2/0	KRF70-12X2-40	M12x2	25	13	12	18	70	40	103	3,9	22	PVL350, V600, DV1300, DV250	25	17	DNV approved
95	4/0	KRF95-10X2-24-26	M10x2	29	15	11	19	55	25	93	4,9	25	V600, DV1300, DV250	25	20	
95	4/0	KRF95-12X2-40	M12x2	29	15	12	18	70	40	107	4,9	25	V600, DV1300, DV250	25	20	DNV approved
120	250	KRF120-10X2-24-26	M10x2	32	17	11	19	55	25	97	4,9	27	V600, DV1300, DV250	25	22	
120	250	KRF120-12X2-40	M12x2	32	17	12	19	71	40	113	4,9	27	V600, DV1300, DV250	25	22	DNV approved
150	300	KRF150-10X2-24-26	M10x2	36	19	11	19	55	25	104	5,9	32	V600, DV1300, DV250	25	25	
150	300	KRF150-12X2-40	M12x2	36	19	12	19	71	40	120	5,9	32	V600, DV1300, DV250	20	25	DNV approved
185	350	KRF185-10X2-24-26	M10x2	39	21	11	21	57	25	111	5,9	37	DV1300, DV250	20	27	
185	350	KRF185-12X2-40	M12x2	39	21	12	20	72	40	126	5,9	37	DV1300, DV250	20	27	DNV approved
240	500	KRF240A-10X2-24-26	M10x2	42	22,5	11	22	58	25	115	6,4	37	DV1300, DV250	10	30	
240	500	KRF240A-12X2-40	M12x2	42	22,5	12	21	73	40	130	6,4	37	DV1300, DV250	10	30	DNV approved
300	600	KRF300A-12X2-40	M12x2	46	24,5	12	22	74	40	133	6,8	40	DV1300, DV250	5	32	DNV approved
400	750	KRF400A-12X2-40	M12x2	56	30	12	23	75	40	145	7,8	52	DV1300, DV250	1	38	DNV approved

t = palm thickness, s = strip length

Tube terminals with two stud holes 50 - 630 mm²

- Material: Cu 99.95%, tin plated Cu/Sn.
- Cable inspection hole. For winding, flexible and stranded Cu-conductors.

Marking example KRF: 95 12F (Elpress logotype included) 20
 95 = mm² 12 = palm hole for M12 F = type KRF, 20 = Die No.



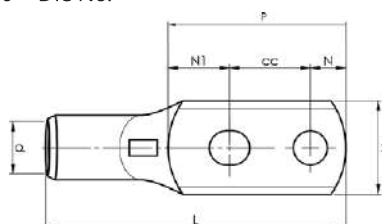
mm ²	Winding mm ²	Name	Screw	W mm	d	N	N1	P	cc	L	t	s	Tool	Die	Pcs/pack
50	69-103	KRF50-12X2-44,5L	12x2	21	11	12	18,5	75	44,5	105	3,4	19	V1300	14,5L	50
70	100-120	KRF70-12X2-44,5L	12x2	25	13	12	17,5	74	44,5	107	3,9	22	V1300	17L	25
95	113-161	KRF95-12X2-40L	12x2	29	15	12	18	70	40	109	4,9	25	V1300	20L	25
95	113-161	KRF95-12X2-44,5L	12x2	29	15	12	18,5	75	44,5	113	4,9	25	V1300	20L	25
120	145-185	KRF120-12X2-40L	12x2	32	17	12	19	71	40	113	4,9	27	V1300	22L	25
120	145-185	KRF120-12X2-44,5L	12x2	32	17	12	17,5	74	44,5	116	4,9	27	V1300	22L	25
150	180-220	KRF150-12X2-40L	12x2	36	19	12	19	71	40	120	5,9	32	V1300, V250	25L	20
150	180-220	KRF150-12X2-44,5L	12x2	36	19	12	18,5	75	44,5	123	5,9	32	V1300, V250	25L	20
185	220-265	KRF185-12X2-40L	12x2	39	21	12	20	72	40	126	5,9	37	V1300, V250	27L	20
296	220-265	KRF185-12X2-44,5L	22x2	39	21	12	19,5	76	44,5	130	5,9	37	V1300, V250	27L	10
240	302-343	KRF240-12X2-40L	12x2	44	24	12	21	73	40	129	5,9	37	V1300, V250	30L	10
240	302-343	KRF240-12X2-44,5L	12x2	44	24	12	19,5	76	44,5	132	5,9	37	V1300, V250	30L	10
300	340-400	KRF300-12X2-40L	12x2	45	24,5	12	22	74	40	136	6,8	44	V250	32L	10
300	340-400	KRF300-12X2-44,5L	12x2	46	24,5	12	20,5	77	44,5	139	6,8	44	V250	32L	10
400	412-500	KRF400-12X2-40L	12x2	56	30	12	23	75	40	145	7,8	52	V250	38L	5
400	412-500	KRF400-12X2-44,5L	12x2	56	30	12	20,5	77	44,5	147	7,8	52	V250	38L	5
500	500-580	KRF500-12X2-40L	12x2	61	33	15	15	70	40	160	8,8	70	V250	42L	5
500	500-580	KRF500-12X2-44,5L	12x2	61	33	12	18,5	75	44,5	165	8,8	70	V250	42L	5
630	630-730	KRF630-12X2-44,5L	12x2	73	39	15	20,5	80	44,5	195	10,8	80	V250	50L	

t = palm thickness, s = strip length

Tube terminals with two stud holes (one oval) 50 - 240 mm²

- Material: Cu 99.95%, tin plated Cu/Sn.
- Cable inspection hole. For winding, flexible and stranded Cu-conductors.
- With an oval hole nearest the tube.

Marking example KRF: 95 12F (Elpress logotype included) 20
 95 = mm² 12 = palm hole for M12 F = type KRF, 20 = Die No.



Conductor Cu mm ²	Winding mm ²	Name	Screw	W mm	d	N	N1	P	cc	L	t	s	Tool	Die	Pcs/pack
50	69-103	KRF50-10X2-24-26L	10x2	21	11	11	22	58	25	87	3,4	19	V1300	14,5L	50
70	100-120	KRF70-10X2-24-26L	10x2	25	13	11	17	53	25	86	3,9	22	V1300	17L	50
95	113-161	KRF95-10X2-24-26L	10x2	29	15	11	19	55	25	93	4,9	25	V1300	20L	25
120	145-185	KRF120-10X2-24-26L	10x2	32	17	11	19	55	25	97	4,9	27	V1300	22L	25
150	180-220	KRF150-10X2-24-26L	10x2	36	19	11	19	55	25	104	5,9	32	V1300, V250	25L	25
185	220-265	KRF185-10X2-24-26L	10x2	39	21	11	21	57	25	111	5,9	37	V1300, V250	27L	20
240	302-343	KRF240-10X2-24-26L	10x2	44	24	11	22	58	25	114	5,9	37	V1300, V250	30L	10

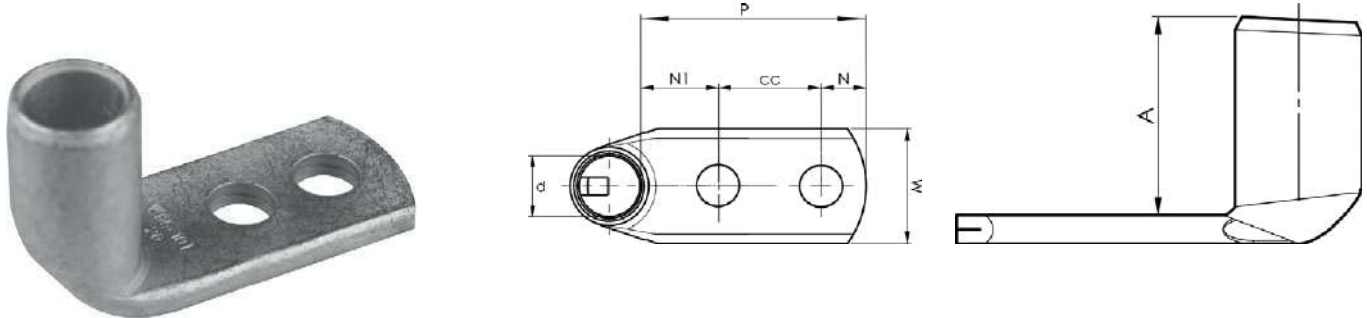
t = palm thickness, s = strip length

Technical data subject to change without notice! - The information is made available on the understanding that E-Tech Components (UK) Ltd and its employees and agents shall have no liability (including liability by reason of negligence) to the users for any loss, damage, cost or expense incurred or arising by reason of any person using or relying on the information and whether caused by reason of any error, negligent act, omission or misrepresentation in the information or otherwise.

Tube terminals 90° with two stud holes 150 - 630 mm² **ELPRESS**

- Material: Cu 99.95%, tin plated Cu/Sn.
- Cable inspection hole.
- For winding, flexible and stranded Cu-conductors.

Marking example KRF: 150 12F (Elpress logotype included) 25
 150 = mm² 12 = palm hole for M12 F = type KRF 25 = Die No.



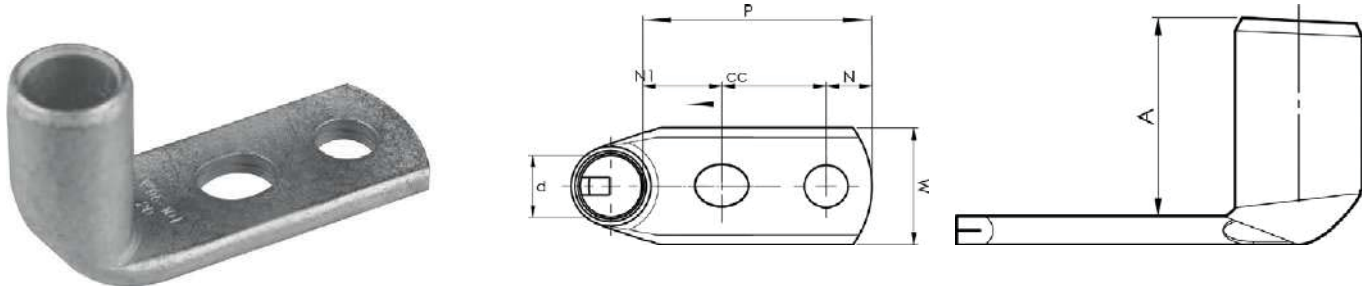
Conductor Cu mm ²	Winding mm ²	Name	Screw	W mm	d	N	N1	P	cc	A	t	s	Tool	Die	Pcs/pack
150	180-220	KRF150-12X2-40L-90GR	12x2	36	19	12	15	67	40	46,1	5,9	32	V1300, V250	25L	20
150	180-220	KRF150-12X2-44,5L-90GR	12x2	36	19	12	16,5	73	44,5	50	5,9	32	V1300, V250	25L	25
240	302-343	KRF240-12X2-40L-90GR	12x2	44	24	12	22	74	40	57,1	5,9	37	V1300, V250	30L	10
240	302-343	KRF240-12X2-44,5L-90GR	12x2	44	24	12	15,5	72	44,5	57,1	5,8	37	V1300, V250	30L	15
300	340-400	KRF300-12X2-40L-90GR	12x2	46	24,5	12	22	74	40	70	6,8	44	V250	32L	10
400	412-500	KRF400-12X2-44,5L-90GR	12x2	56	30	12	23,5	80	44,5	70	7,8	52	V250	38L	5
500	500-580	KRF500-12X2-44,5L-90GR	12x2	61	33	15	20,5	80	44,5	86	8,8	70	V250	42L	4
630	630-730	KRF630-12X2-44,5L-90GR	12x2	73	39	15	17,5	80	44,5	112	10,8	80	V250	50L	1

t = palm thickness, s = strip length

Tube terminals 90° with two stud holes (one oval) 70 - 240 mm²

- Material: Cu 99.95%, tin plated Cu/Sn.
- Cable inspection hole.
- For winding, flexible and stranded Cu-conductors.
- With an oval hole nearest the tube.

Marking example KRF: 150 12F (Elpress logotype included) 25
 150 = mm² 12 = palm hole for M12 F = type KRF 25 = Die No.



Conductor Cu mm ²	Winding mm ²	Name	Screw	W mm	d	N	N1	P	cc	A	t	s	Tool	Die	Pcs/pack
70	100-120	KRF70-10X2-24-26L-90GR	10x2	25	13	11	16	51	24	30,1	3,9	22	V1300	17L	50
150	180-220	KRF150-10X2-24-26L-90GR	10x2	36	19	11	18	53	24	48,1	5,9	32	V1300, V250	25L	20
240	302-343	KRF240-10X2-24-26L-90GR	10x2	44	24	11	19	56	24	57,1	5,9	37	V1300, V250	30L	10

t = palm thickness, s = strip length

Technical data subject to change without notice! - The information is made available on the understanding that E-Tech Components (UK) Ltd and its employees and agents shall have no liability (including liability by reason of negligence) to the users for any loss, damage, cost or expense incurred or arising by reason of any person using or relying on the information and whether caused by reason of any error, negligent act, omission or misrepresentation in the information or otherwise.

Technical Support & Training Centre



Apprentice Courses



Expert Seminars



Certified Training



Technical Submittals



Tool Demonstrations



On-Site Crimping Inspection & Assessment

Crimp & Tool Service Centre

Repair — Calibration — Maintenance — Certification



Elpress
Authorized
Partner

etech
components

Electrical cable &
component specialists

