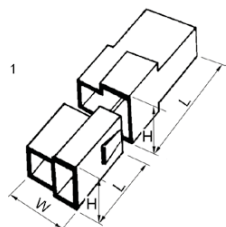


## Connector block for receptacles 1.5 - 6 mm<sup>2</sup>

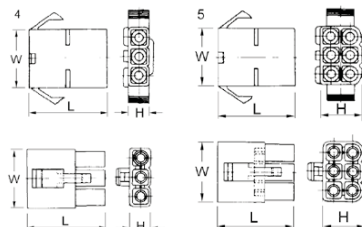
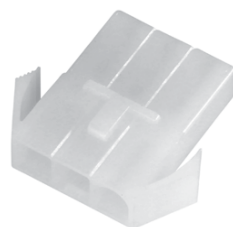
- Used with receptacles and tabs 1.5-6 mm<sup>2</sup> with locking lip.
- Material nylon transparent.
- Max voltage 250 V.



Name	Pole	W mm	H	L	Pcs/pack	Used with
408-2-M	2	16,4	9,7	24	100	B2507FLSN, B4607FLSN
408-4-M	4	28	15,3	24	100	B2507FLSN, B4607FLSN
408-6-M	6	29	15,2	29	100	B2507FLSN, B4607FLSN
408-8-M	8	38	15,6	34	100	B2507FLSN, B4607FLSN
408-2-F	2	20	12,7	32	100	B2507HN, B4607HN
408-4-F	4	23	17,4	33	100	B2507HN, B4607HN
408-6-F	6	31	18,7	33	50	B2507HN, B4607HN
408-8-F	8	40	18,6	33	25	B2507HN, B4607HN

## Connector block for bullets and sockets 0.2 - 1.5 mm<sup>2</sup>

- Used with sockets and bullets 0.2-1.5 mm<sup>2</sup>.
- Material polyamide transparent.
- Max voltage 250 V.
- Max current 20 A.
- Temperature range -20°C to +105°C.
- Tested against breakthrough for 1 min at 1500 V AC.



Name	Pole	W mm	H	L	Pcs/pack	Used with
MC02F	2	13,6	7,3	27	100	B0502HA, B1502HA
MC02M	2	13,5	7,3	27	100	B0502HO, B1502HO
MC03F	3	19,6	7,2	27	100	B0502HA, B1502HA
MC03M	3	19,6	7,1	27	100	B0502HO, B1502HO
MC04F	4	13,5	13,5	27	100	B0502HA, B1502HA
MC04M	4	13,5	13,5	27	100	B0502HO, B1502HO
MC06F	6	19,6	13,4	27	100	B0502HA, B1502HA
MC06M	6	19,6	13,4	27	100	B0502HO, B1502HO
MC09F	9	19,7	19,7	27	100	B0502HA, B1502HA
MC09M	9	19,7	19,7	27	100	B0502HO, B1502HO
MC12F	12	26	19,6	27	50	B0502HA, B1502HA
MC15F	15	32	19,6	27	50	B0502HA, B1502HA
MC15M	15	32	19,9	26	50	B0502HO, B1502HO