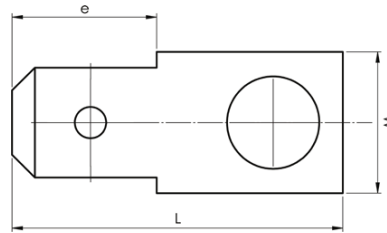


Tab connector

• Material: brass/Cu, tin plated Cu/Sn.

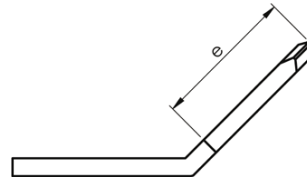
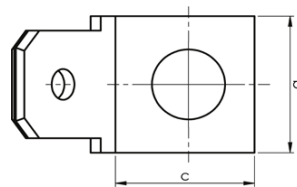


Name	W mm	e	φ	L	Tab	Pcs/pack
B1807H4	8,1	8,3	4,4	19,1	6,3x0,8	100
B1807H5	8	8,3	5,4	19,2	6,3x0,8	100

φ = Hole diameter

Tab connector 45°

• Material: brass/Cu, tin plated Cu/Sn.

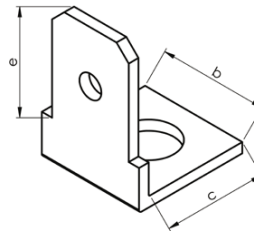
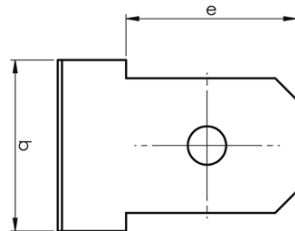


Name	b mm	c	e	φ	Tab	Angle °	Pcs/pack
B0457H4	8	8	8	4,1	6,3x0,8	45°	100
B0457H5	8	8	8	5,3	6,3x0,8	45°	100

φ = Hole diameter

Tab connector 90°

• Material: brass/Cu, tin plated Cu/Sn.



Name	Bb mm	c	e	φ	Tab	Angle °	Pcs/pack
B0907H4	8	8	8,3	4,1	6,3x0,8	90°	100
B0907H5	8	8	8	5,3	6,3x0,8	90°	100

φ = Hole diameter