

Heavy Duty Hook Cleat

384 Series



The heavy duty hook cleat is a two piece, single fixing cleat designed to aid single person installation.

Features and Benefits

- Suitable for use with cables diameters 25 to 80mm.
- Manufactured from glass-filled nylon.
- Two-piece, single fixing design.
- Can be double stacked on a single fixing.
- Can be installed in temporary open position to aid single person working.
- All sizes secured with 10mm fixings.
- Operating temperature -25°C to +85°C.
- For normal industrial use Indoor and Outdoor.
- Fits most ladder and tray systems.
- Not designed to secure cables in long vertical routes.
- Tested in accordance with BS EN 50368.

Performance Data

| Test Standard | EN 50368:2003 |
|-------------------|-------------------------------|
| Type | 6.1.2 Non-Metallic |
| Impact Resistance | 6.2.4 Heavy -> 6.2.5 V. Heavy |
| Lateral Load | 1.320 -> 1.5 kN |
| Axial Load | 82 -> 109 N |
| Needle Flame | >120 secs |

* Technical Information subject to change without notice



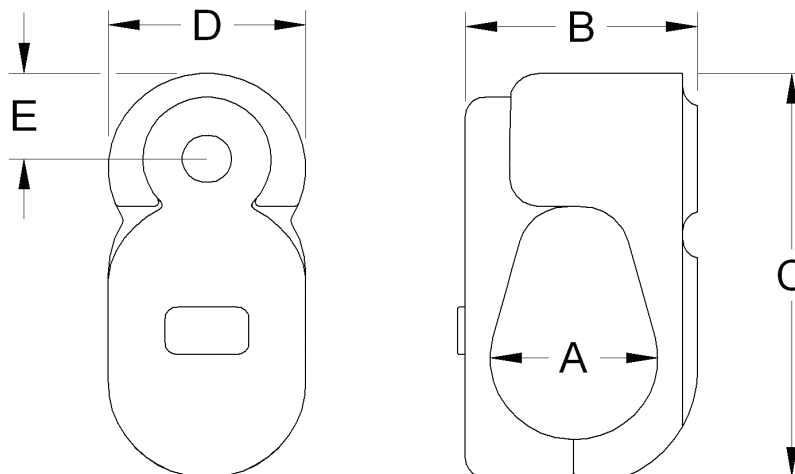
Technical Data

| Cable and Cleat Selection | | | Cleat Details | | | | | Weight (g) |
|---------------------------|----------------|-----|-----------------|------|-----|----|----|------------|
| Design Number | Cable Diameter | | Dimensions (mm) | | | | | |
| | A (mm) | | B | | C | D | E | |
| Nylon | Min | Max | Min | Max | | | | |
| 384AA01 | 25 | 35 | 36 | 46 | 76 | 40 | 18 | 63 |
| 384AA02 | 34 | 44 | 44 | 54 | 85 | 40 | 18 | 74 |
| 384AA03 | 43 | 53 | 56.5 | 66.5 | 96 | 40 | 18 | 105 |
| 384AA04 | 52 | 62 | 65.5 | 75.5 | 106 | 40 | 18 | 129 |
| 384AA05 | 61 | 71 | 78 | 88 | 119 | 44 | 20 | 175 |
| 384AA06 | 70 | 80 | 87 | 97 | 129 | 44 | 20 | 221 |

* Technical information subject to change without notice

Method of Fixing

In all applications the cleat should be mounted on suitable M10 fixings. There is no need for any channel adaptor when mounting directly on to 'C' section channel.



Prysmian Cables & Systems Limited,
Oak Road, Wrexham Industrial Estate, Wrexham, LL13 9PH, UK

Commercial Enquiries,
Sales Office Tel: 0845 767 8345,
International Sales Office Tel: +44 2380 295481

www.biconcomponents.co.uk

