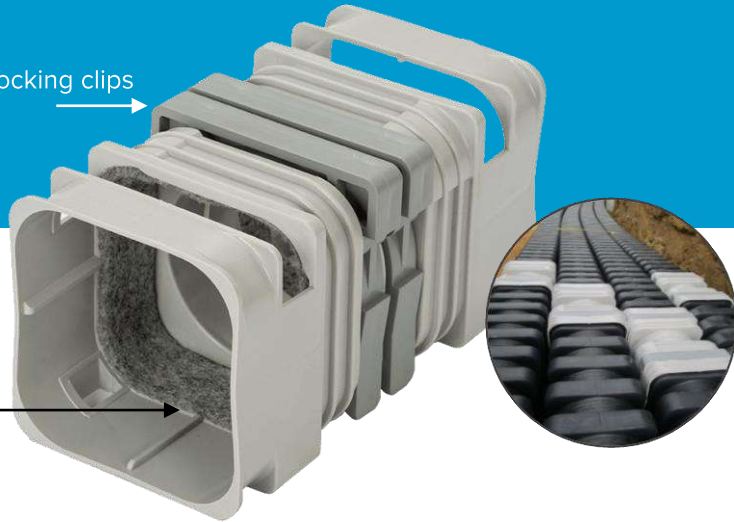


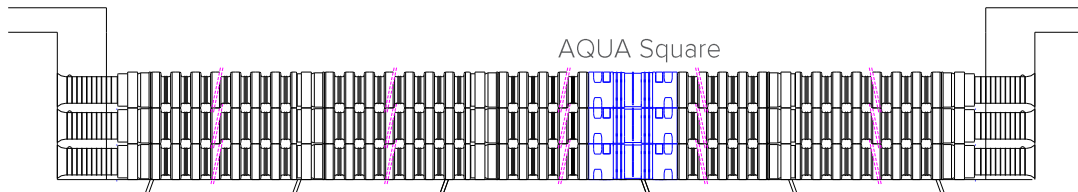
AQUA SQUARE CONNECTION PROCEDURE

When EFLEX Square ducts meet at the centre point of any given section, the length can be adjusted and the AQUA Square accessory can be used to complete the installation.

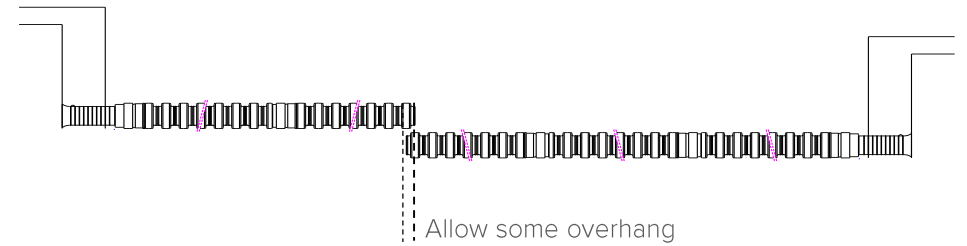
Single-action locking clips



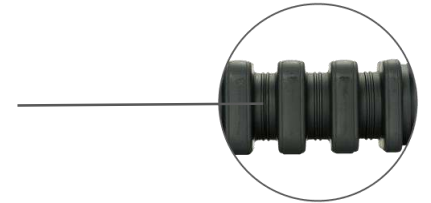
Moisture-activated expanding material



1 Determine the cutting locations:



2 Cut along the built-in cutting guides



3 Insert the cut ends of EFLEX Square into the Aqua Square. Insert the single-action locking clips, checking that it is secure by pulling by hand in the opposite direction.



NOTE

- Deburr the cut pieces of EFLEX Square if necessary
- Install AQUA Square shortly after it is removed from its protective bag. The fabric reacts to moisture in the air to expand and provide a watertight seal.
- Ensure parts being connected are free from dirt and debris.
- Only cut ends of EFLEX Square can be used with AQUA Square.
- Ensure the single-action locking clip is securely in place and flush with the top surface of the AQUA Square body.