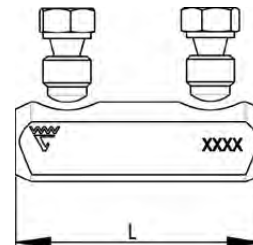
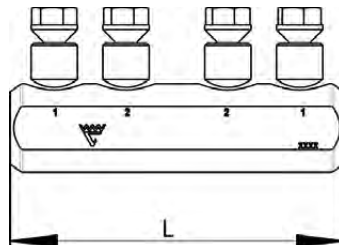


# Shearbolt connectors 10 - 240 mm<sup>2</sup> (pre-assembled screw)

## Properties:

- screw material: brass, for minimum friction
- partition
- pre-assembled shear-off screws for easy handling
- voltage range: 1 kV
- meets the requirements of standard IEC 61238-1
- PEN is a filler piece for use when connecting the cable's copper screen



Through connector SC50R50S with threaded screws.

Cable type round mm <sup>2</sup>	Cable type sector mm <sup>2</sup>	Name	Screen conductor	Screen conductor (with filling piece)	d	D	L	Pcs/pack
10-50	16-50	SC50R50S	10-35		10,7	17,3	62	10
35-95	50-95	SC95N	57-95	16-50 (SC95N/PEN)	16,8	23,0	69	1
70-150	70-150	SC150N	120-146	21-95 (SC150N/PEN)	19,5	23,0	80	1
95-240	120-240	SC240N		29-146 (SC240/PEN)	25,0	33,1	144	1

s = strip length

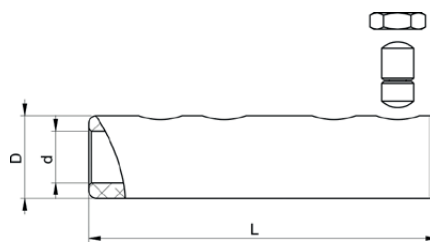
# Shearbolt connectors 10 - 630 mm<sup>2</sup> (reversible screw)

## Properties:

- screw material: brass, for minimum friction
- partition
- reversible shear-off screws
- voltage range: 1 kV to 36 kV
- meets the requirements of standard IEC 61238-1
- PEN is a filler piece for use when connecting the cable's copper screen



8



Cable type round mm <sup>2</sup>	Cable type sector mm <sup>2</sup>	Name	Screen conductor	Screen conductor (with filling piece)	d	D	L	s	Pcs/pack
50-95	50-95	SC95R95S	70-95	16-57 (SC95N/PEN)	16,0	27,0	114	58	1
95-150	95-120	SC150R95S	70-95		16,0	27,0	114	58	1
185-240	120-185	SC240R185S			20,0	33,5	134	64	1
300-400	240	SC400R240S			25,8	41,5	175	87	1
500-630		SC630R			33,0	49,0	210	106	1

s = strip length