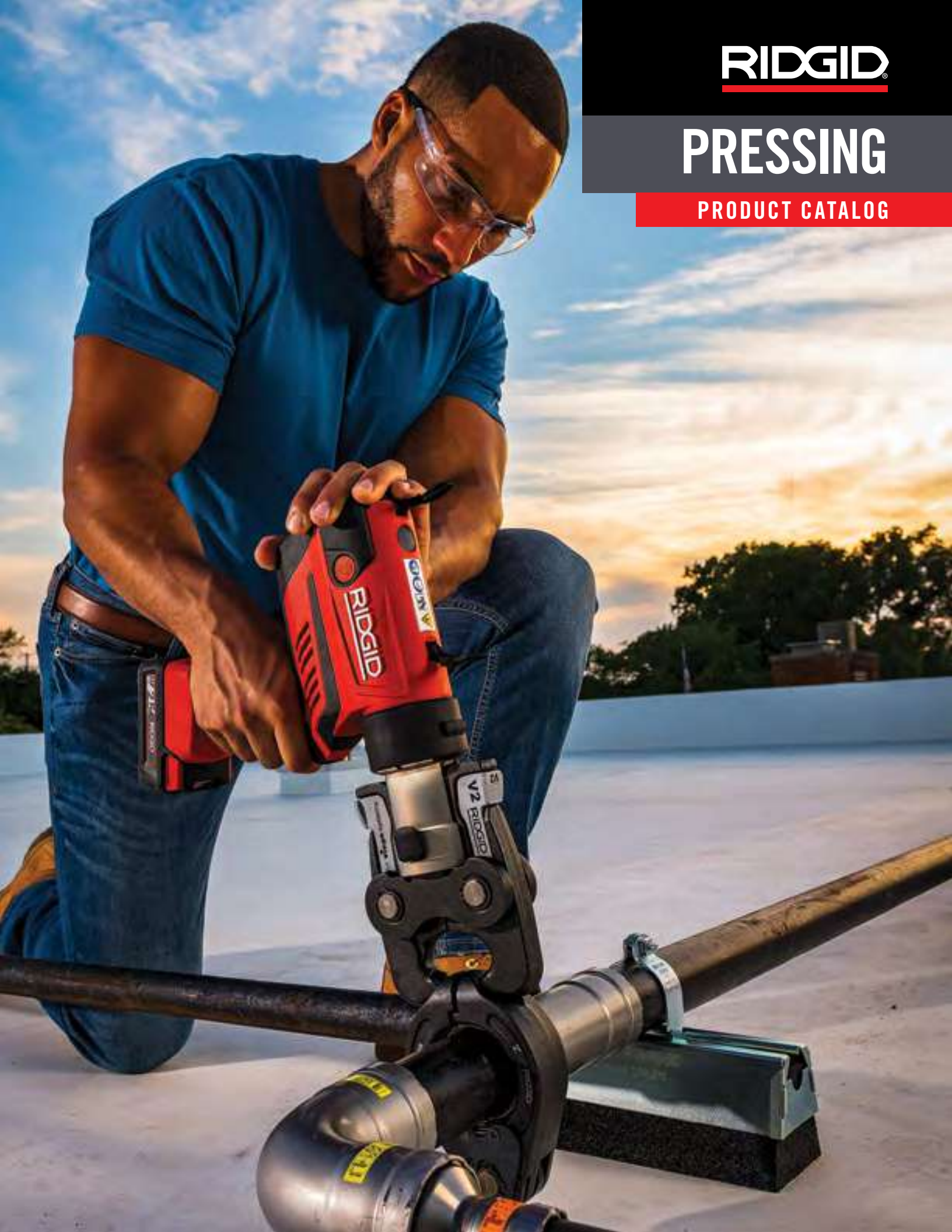


**RIDGID**

# PRESSING

PRODUCT CATALOG



# BUILT FOR THOSE WHO KNOW™

When you work in the skilled trades, you leave your mark on every job you touch. Your reputation is built over time. Day by day, job by job.

When it's your name on the line, make sure our name is on your tool. For nearly 100 years, we've built our legacy the same way you have — one job at a time. We make tools that stand up to the toughest challenges and last long enough for you to pass them down to the next generation. We deliver a better way to work.

It's more than our promise. We guarantee it.



# TABLE OF CONTENTS



10

RP 350 PRESS TOOL



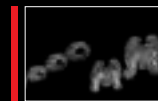
11

RP 351 PRESS TOOL



12

STANDARD JAWS FOR PROPRESS®  
OR PUREFLOW®



13

TIGHT ACCESS RINGS FOR PROPRESS



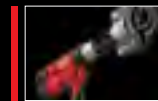
14

RINGS FOR PROPRESS XL-C™



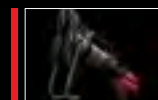
15

STANDARD JAWS AND TIGHT  
ACCESS RINGS FOR MEGAPRESS®



16

RP 342-XL PRESS TOOL



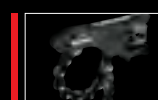
17

PRESS BOOSTER



18

STRUTSLAYR™ STRUT SHEAR HEAD



19

PRESS SNAP™ SOIL PIPE CUTTER



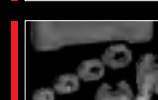
20

RP 240 & RP 241 PRESS TOOLS



22

COMPACT JAWS FOR PROPRESS, PUREFLOW,  
MEGAPRESS OR ASTM F 1807



23

TIGHT ACCESS RINGS FOR  
PROPRESS OR MEGAPRESS



24

MANUAL PRESS TOOLS



25

RIDGID LINK APP

# PRESS CONFIDENTLY. PRESS WITH THE BEST.

RIDGID® press tools save you time and money by delivering reliable performance press after press. Every generation of press tools works harder – and smarter – than the last. We are constantly working to reduce in-use tool weight while increasing overall performance. That's why we are the #1 press tool manufacturer since 1999. **RIDGID: BUILT FOR THOSE WHO KNOW.™**



LOWER TOTAL  
INSTALLATION COST.



WATERTIGHT  
CONNECTIONS  
IN SECONDS.



PRESS CONNECTIONS  
ON A "WET" SYSTEM.



NO OPEN FLAMES.  
NO BURN PERMITS.  
NO ONSITE FIRE WATCH.



REDUCES VITAL  
EQUIPMENT SHUTDOWNS.

## #1 IN NORTH AMERICA

RIDGID® revolutionized the North American Market by introducing press technology in 1999. Since then, RIDGID has become the most recognizable and trusted brand for press tools. Through years of dedication to delivering a better way to work, RIDGID stands as the #1 pressing platform in North America.

## RUGGED DURABILITY.

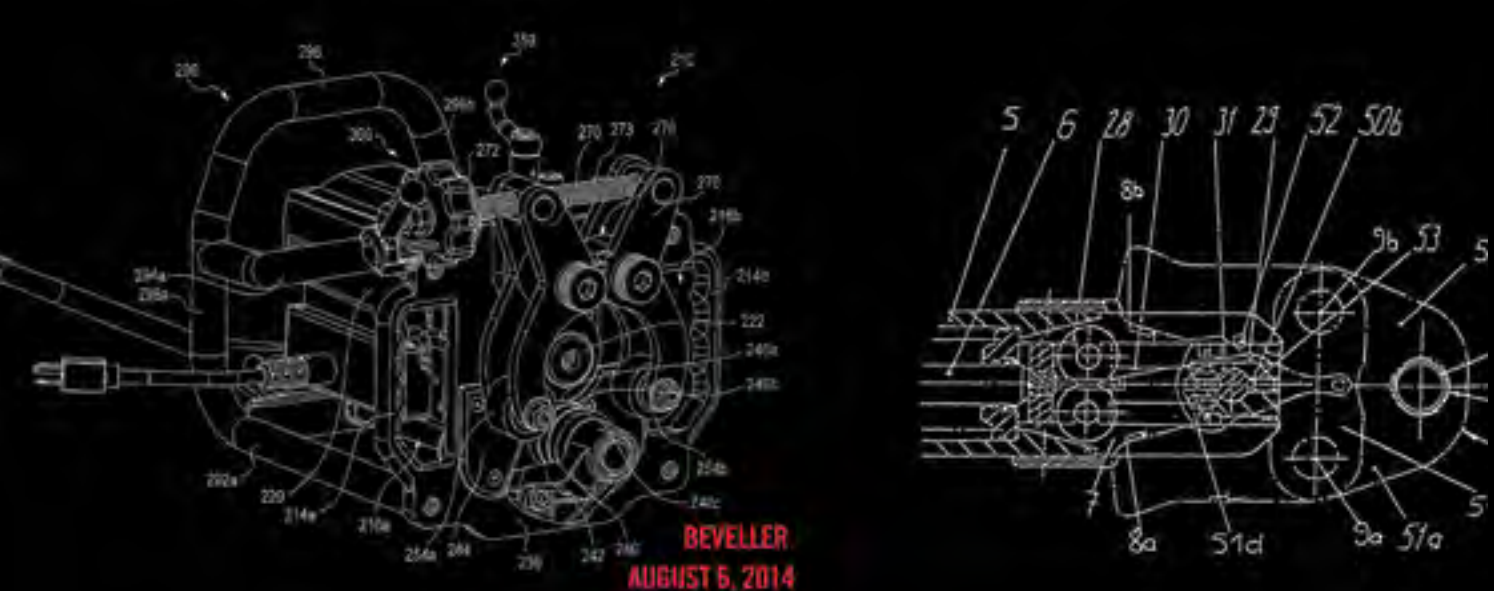
RIDGID tools are tested under the harshest conditions to ensure that each tool will work properly in any environment. RIDGID designers, engineers and testers work closely to deliver durable products that offer quality in every press. Rigorous lab testing ensures that every RIDGID press tool is ready for even the toughest of jobs.

## PURPOSE-BUILT.

RIDGID® remains the #1 press tool in North America due to constant innovation. They introduced the first lithium ion battery for pressing, the first soil pipe cutter actuated by a press tool and the first tools for pressing iron pipe. RIDGID continued its tradition of purpose-built innovations with the new RP 342-XL, the press tool that presses any size and material pipe that can currently be pressed.

## SMALLER. FASTER. SMARTER.

Every generation of RIDGID press tools works harder and smarter than the last. The new RP 350's ergonomic design lets you press in tight spaces, while its brushless motor is capable of over 100,000 cycles. That means less downtime with zero scheduled maintenance. The RP 240 and 241's compact profiles let you work in difficult jobsite conditions with ease. Current models are equipped with Bluetooth® compatibility, so the tools can interface with RIDGID Link, an app that shares valuable insights about the tool.



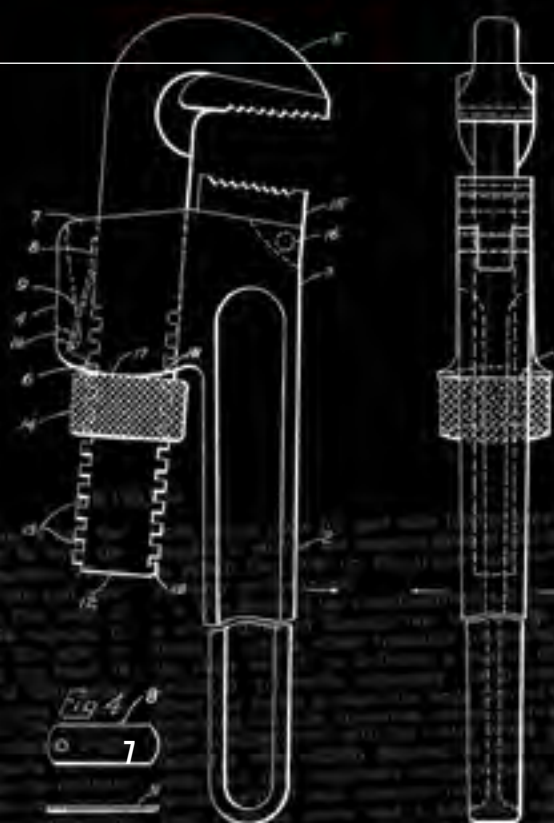
# #1 IN PRESS TOOLS SINCE 1999.

RIDGID® press tools are unsurpassed in making quick and reliable connections on copper, carbon steel, stainless steel and PEX tubing. No open flames. No mess. Just secure connections in less than five seconds – wet or dry.

- KEY FEATURES
- FLAMELESS SYSTEM
- FASTER CONNECTIONS
- ALL-DAY POWER



PIPE WRENCH MAY 26, 1922



# PRESSING CROSS REFERENCE GUIDE



## COMPACT TOOL APPLICATIONS

	TUBING		PIPE		PEX
	Copper	Stainless Steel	Stainless Steel	Carbon Steel	
JAWS					
RINGS + RING ACTUATORS					
BATTERY PLATFORM					



RP 351  
RP 342-XL

## STANDARD AND EXTENDED TOOL APPLICATIONS

	TUBING		PIPE		PEX	STANDARD PRESS TOOL APPLICATIONS
	Copper	Stainless Steel	Stainless Steel	Carbon Steel		
JAWS						
RINGS + RING ACTUATORS						
BATTERY PLATFORM						

# PRESSING STANDARD PRESS TOOLS

## RP 350 PRESS TOOL

**CAPACITY: ½" TO 4" (CARBON STEEL\*,  
COPPER AND STAINLESS STEEL);  
½" TO 2" (PEX)**

\*PRESS BOOSTER IS NEEDED FOR 2½" TO 4" CARBON STEEL

With a brushless motor, the RP 350 eliminates the need for scheduled maintenance and is capable of over 100,000 cycles. 360° swivel and an ergonomic pistol-grip design get you in and out of tight spots with ease. Total compatibility with all RIDGID® Standard Series applications gives you the flexibility and adjustability you need from job to job.

### RP 350 Battery Press Tool

CATALOG NO.	DESCRIPTION	WEIGHT LB.
67053	RP 350 Battery Kit with ½" - 2" Jaws for ProPress®	50.8
67058	RP 350 Battery Kit with ½" - 1" Jaws for ProPress	30.8
70138	RP 350 Battery Kit with ½" - 1" Jaws for MegaPress®	26.5
67063	RP 350 Battery Kit (no jaws)	18.8
67068	RP 350 Corded Kit with ½" - 2" Jaws for ProPress	47.8
67073	RP 350 Corded Kit with ½" - 1" Jaws for ProPress	27.8
67078	RP 350 Corded Kit (no jaws)	15.8
67083	RP 350 Press Tool Only	7.1

### Specifications

- ▶ **WEIGHT**  
Tool Only – 7.1 lbs.
- ▶ **LENGTH**  
11.3"
- ▶ **HEIGHT**  
11"
- ▶ **HYDRAULIC RAM OUTPUT**  
7,200 lbs.
- ▶ **CYCLE TIME**  
~4 seconds
- ▶ **SERVICE INTERVAL**  
No Scheduled Maintenance
- ▶ **POWER**  
18V Lithium Ion Battery
- ▶ **OPERATING TEMPERATURE RANGE**  
15° F TO 122° F (-10° C TO 50° C)
- ▶ **LIGHTING**  
LED light for low or no-light environment
- ▶ **360° BARREL/JAW SWIVEL**



**BRUSHLESS MOTOR**  
Increases efficiency and durability



**NO SCHEDULED MAINTENANCE**  
Reduces downtime



### STANDARD PRESS TOOL APPLICATIONS

STANDARD JAWS FOR PUREFLOW®



Page 12

STANDARD JAWS AND TIGHT ACCESS RINGS FOR PROGRESS



Pages 12 & 13

RINGS FOR PROGRESS XL-C™



Page 14

STANDARD JAWS AND TIGHT ACCESS RINGS FOR MEGAPRESS®



Page 15



**NEW**

# RP 351 PRESS TOOL

**CAPACITY: ½" TO 4" (CARBON STEEL\*,  
COPPER AND STAINLESS STEEL);  
½" TO 2" (PEX)**

\*PRESS BOOSTER IS NEEDED FOR 2½" TO 4" CARBON STEEL

The RP 351 is our latest in-line Standard Press Tool, optimally balanced to reduce jobsite fatigue. With no scheduled maintenance and more presses per charge, this tool delivers reliability and efficiency on every job. 360° swivel helps you press in tight spots, while total compatibility with all RIDGID® Standard Series applications delivers valuable versatility.

## RP 351 Battery Press Tool

CATALOG NO.	DESCRIPTION	WEIGHT LB.
67178	RP 351 Battery Kit with ½" - 2" Jaws for ProPress®	50.7
67183	RP 351 Battery Kit with ½" - 1" Jaws for ProPress	30.7
70818	RP 351 Battery Kit with ½" - 1" Jaws for MegaPress®	26.4
67188	RP 351 Battery Kit (no jaws)	18.7
67193	RP 351 Corded Kit with ½" - 2" Jaws for ProPress	47.7
67198	RP 351 Corded Kit with ½" - 1" Jaws for ProPress	27.7
67218	RP 351 Corded Kit (no jaws)	15.7
67223	RP 351 Press Tool Only	6.8



### ENDLESS HEAD SWIVEL

Gets in and out of  
tight spaces



### MOST ADVANCED LED INTERFACE & LIGHTING

Ensures accuracy in  
low-light situations

## Specifications

- ▶ **WEIGHT**  
Tool Only – 6.8 lbs.
- ▶ **LENGTH**  
20.1"
- ▶ **HEIGHT**  
12.6"
- ▶ **HYDRAULIC RAM OUTPUT**  
7,200 lbs.
- ▶ **CYCLE TIME**  
8 seconds
- ▶ **SERVICE INTERVAL**  
No Scheduled Maintenance
- ▶ **POWER**  
18V Lithium Ion Battery
- ▶ **OPERATING TEMPERATURE RANGE**  
15° F TO 122° F (-10° C TO 50° C)
- ▶ **LIGHTING**  
LED light for low or no-light environment
- ▶ **360° BARREL/JAW SWIVEL**

### PRESS BOOSTER



Page 17

### STRUTSLAYR™ STRUT SHEAR HEAD



Page 18

### PRESS SNAP™ SOIL PIPE CUTTER



Page 19



800.769.7743  
[RIDGID.COM/350](http://RIDGID.COM/350)

**PRESSING**  
**STANDARD PRESS**  
**TOOL APPLICATIONS**

# STANDARD JAWS FOR PROPRESS® OR PUREFLOW® - ½" TO 2"

FOR USE WITH RP 350, RP 351, RP 342-XL, RP 340, 320-E, CT400



### Jaws For ProPress (Copper and Stainless)

CATALOG NO.	DESCRIPTION	WEIGHT LB.
76652	½" Jaw for ProPress	4.0
76657	¾" Jaw for ProPress	4.3
76662	1" Jaw for ProPress	4.5
76667	1¼" Jaw for ProPress	4.8
76672	1½" Jaw for ProPress	6.5
76677	2" Jaw for ProPress	10.0

### Jaws For PureFlow (PEX)

CATALOG NO.	DESCRIPTION	WEIGHT LB.
22653	½" Jaw for PureFlow	4.0
22658	¾" Jaw for PureFlow	4.3
22663	¾" Jaw for PureFlow	4.5
22668	1" Jaw for PureFlow	4.5
22673	1¼" Jaw for PureFlow	4.8
22678	1½" Jaw for PureFlow	6.5
35343	2" Jaw for PureFlow	10.0





# TIGHT ACCESS RINGS FOR PROPRESS® - ½" TO 2"

## FOR PROPRESS COPPER AND STAINLESS STEEL FITTINGS

- ▶ V1 and V2 Kits are designed for RIDGID® Standard Press Tools (RP 350, RP 351, RP 342-XL, RP 340, 320-E, CT400)
- ▶ Rings can be used with all RIDGID Press Tools (Standard and Compact)
- ▶ Ball-tip actuator swivels 180° for use in tight spaces

### Kits

CATALOG NO.	ACTUATOR	DESCRIPTION	WEIGHT LB.
27423	V1	V1 Kit, ½" - 1¼" Rings for ProPress	10.8
27428	V2	V2 Kit, 1½" - 2" Rings for ProPress	13.6
28048	V1/C1	V1/C1 Combo Kit, ½" - 1¼" Rings for ProPress	12.9

### Rings for ProPress (for use with all RIDGID Press Tools)

CATALOG NO.	ACTUATOR	DESCRIPTION	WEIGHT LB.
27998	V1/C1	½" Ring for ProPress	0.5
28003	V1/C1	¾" Ring for ProPress	0.8
28008R	V1/C1	1" Ring for ProPress	1.0
28013	V1/C1	1¼" Ring for ProPress	1.0
28018	V2	1½" Ring for ProPress	1.5
28023	V2	2" Ring for ProPress	2.0

### Actuators

CATALOG NO.	ACTUATOR	DESCRIPTION	WEIGHT LB.
28033	V1	V1 Press Ring Actuator	4.9
21878	V2	V2 Press Ring Actuator	6.7

### Accessories

CATALOG NO.	ACTUATOR	DESCRIPTION	WEIGHT LB.
28028	V1/C1	Carrying Case #1 for ½" - 1¼"	3.0
28038	V2	Carrying Case #2 for 1½" - 2"	3.0



For compatible Standard and Compact Press Tools, see pages 10, 11, 20, 21

# RINGS FOR PROPRESS® XL-C™ - 2½" TO 4"

FOR PROPRESS XL-C COPPER AND STAINLESS STEEL FITTINGS  
 FOR USE WITH RP 350, RP 351, RP 342-XL, RP 340, 320-E, CT400



**Kit**

CATALOG NO.	ACTUATOR	DESCRIPTION	WEIGHT LB.
20483	V2	2½" - 4" Rings for ProPress XL-C, V2 Actuator and Case	40.3

**SAVE TIME**

Connect 2½" to 4" copper and stainless in 5 seconds.

**ALL THE RIGHT ANGLES**

Ball-tip V2 actuator swivels 180° for use in tight spaces.

**Rings**

CATALOG NO.	ACTUATOR	DESCRIPTION	WEIGHT LB.
20543	V2	2½" Ring for ProPress XL-C	6.0
20548	V2	3" Ring for ProPress XL-C	9.8
20553	V2	4" Ring for ProPress XL-C	11.8

**Actuator**

CATALOG NO.	ACTUATOR	DESCRIPTION	WEIGHT LB.
21878	V2	V2 Press Ring Actuator	6.7

**Accessory**

CATALOG NO.	DESCRIPTION	WEIGHT LB.
21103	XL-C Carrying Case Only	7.8

For compatible Standard Press Tools, see pages 10, 11

# STANDARD JAWS AND TIGHT ACCESS RINGS FOR MEGAPRESS® - ½" TO 2"

**FOR USE WITH RP 350, RP 351, RP 342-XL, RP 340, 320-E, CT400**

- ▶ Save time and cost by press connecting carbon steel pipe
- ▶ Flameless system eliminates the need for hot work permits
- ▶ Jointly developed and tested with Viega®

## Kits

CATALOG NO.	DESCRIPTION	WEIGHT LB.
48553	½" - 2" MegaPress Kit	48.5
48558	½" - 1" MegaPress Kit	23.1

## Jaws for MegaPress

CATALOG NO.	DESCRIPTION	WEIGHT LB.
37958	½" Jaw for MegaPress	4.9
37963	¾" Jaw for MegaPress	5.2
37968	1" Jaw for MegaPress	6.8

## Rings for MegaPress

CATALOG NO.	ACTUATOR	DESCRIPTION	WEIGHT LB.
Coming Soon	V1/Cl	½" Ring for MegaPress	1.0
Coming Soon	V1/Cl	¾" Ring for MegaPress	1.0
Coming Soon	V2	1" Ring for MegaPress	1.0
37973	V2	1¼" Ring for MegaPress	6.0
37978	V2	1½" Ring for MegaPress	6.5
37983	V2	2" Ring for MegaPress	6.0

## Actuator

CATALOG NO.	DESCRIPTION	WEIGHT LB.
21878	V2 Press Ring Actuator	6.7

## Accessories

CATALOG NO.	DESCRIPTION	WEIGHT LB.
37993	½" - 1" MegaPress Prep Tool	1.8
37988	1¼" - 2" MegaPress Prep Tool	2.3
38008	Abrasive Strips (Box of 10) ½" - 1"	0.3
38003	Abrasive Strips (Box of 10) 1¼" - 2"	0.3
48563	MegaPress Carrying Case	6.4



½" - 2" MegaPress Kit



½", ¾" Rings for MegaPress



MegaPress Prep Tool



Abrasive strips

For compatible Standard Press Tools, see pages 10, 11

**PRESSING  
STANDARD  
PRESS TOOLS**

# RP 342-XL PRESS TOOL

**CAPACITY: ½" TO 4" (CARBON STEEL, COPPER AND STAINLESS STEEL); ½" TO 2" (PEX)**

The RP 342-XL is the first ever RIDGID® press tool that works on any size and material pipe. From ½" PEX all the way up to 4" carbon steel\*, one tool can press it all. It also works with the full line of RIDGID Standard Series applications including fan favorites like STRUTSLAYR™ and Press Snap™ Soil Pipe Cutter. Its ergonomic design and versatile applications make it the tool you want for every job.

CATALOG NO.	DESCRIPTION	WEIGHT LB.
65468	RP 342-XL Kit	22.7



**QUICK SWITCH**  
**COLLAR**  
For standard and extended applications

**Specifications**

- ▶ **WEIGHT**  
Tool Only – 10.8 lbs.  
Tool with Battery – 11 lbs.
- ▶ **LENGTH**  
20.9"
- ▶ **HEIGHT**  
10.5"
- ▶ **HYDRAULIC RAM OUTPUT**  
7,200 lbs.
- ▶ **CYCLE TIME**  
Standard ~4 seconds  
Extended ~9 seconds
- ▶ **SERVICE INTERVAL**  
20,000 Cycles
- ▶ **POWER**  
18V Advanced Lithium 2.5 Ah Battery
- ▶ **OPERATING TEMPERATURE RANGE**  
15° F to 122° F (-10° C to 50° C)
- ▶ **LIGHTING**  
LED light for low or no-light environment
- ▶ **270° BARREL/JAW SWIVEL**



\*Viega Z3 actuator is required for 2 ½" to 4" carbon steel applications



# PRESS BOOSTER

**CAPACITY: 2½" TO 4" CARBON STEEL**

**FOR USE WITH MEGAPRESS® FITTINGS  
AND WITH RIDGID® STANDARD PRESS TOOLS  
(RP 350, RP 351, RP 340, RP 330)**

Increase the output of your RIDGID Standard Press Tool with the Press Booster. Designed for efficiency and versatility, this tool connects carbon steel pipe up to 4" in less than 25 seconds.

CATALOG NO.	DESCRIPTION	WEIGHT LB.
60658	Press Booster for MegaPress XL	21.6

## Kits

CATALOG NO.	DESCRIPTION	WEIGHT LB.
60638	2½" - 4" Rings for MegaPress XL Kit with Press Booster	52.5
66868	2½" - 4" Rings for MegaPress XL Kit with Case	29.4

## Rings

CATALOG NO.	DESCRIPTION	WEIGHT LB.
60643	2½" Ring for MegaPress XL	5.9
60648	3" Ring for MegaPress XL	7.1
60653	4" Ring for MegaPress XL	9.9

## Accessories

CATALOG NO.	DESCRIPTION	WEIGHT LB.
60663	Press Booster Carrying Case	21.6
66863	Case for 2½" - 4" Rings	6.4



Cat. #60638



## MEGAPRESS RINGS FOR RP 342-XL AND PRESS BOOSTER

**4" RING FOR  
MEGAPRESS XL**



Cat. #60653

**3" RING FOR  
MEGAPRESS XL**



Cat. #60648

**2½" RING FOR  
MEGAPRESS XL**



Cat. #60643

**PRESSING**  
**STANDARD PRESS**  
**TOOL APPLICATIONS**

**STRUTSLAYR™**

**NEW**

**STRUT SHEAR HEAD**

**CUTTING CAPACITY UP TO 12-GAUGE MILD STEEL  
 STRUT CHANNEL ON 1 5/8" x 1 5/8" AND 1 5/8" x 1 3/16"**

STRUTSLAYR™ delivers a fab shop quality cut in the field in five seconds or less. A built-in measuring guide and powerful shear ensure a precise cut and reduce the need for filing. A spark-free cutting plane keeps jobsites safer and cleaner, while a compact design makes for easy transport to and from jobsites.



**BURR-FREE  
 IN 5 SECONDS**



**NO FILING  
 NECESSARY**



**MOBILE  
 STRUT CUTTER**



**SPARK-FREE  
 CUTTING PLANE**



**BUILT-IN  
 MEASURING GUIDE**

**Kits**

CATALOG NO.	DESCRIPTION	WEIGHT LB.
64053	Kit, Head+Case+1 3/16" Die	19.76
64058	Kit, Head+Case+1 5/8" Die	19.76

**Accessories**

CATALOG NO.	DESCRIPTION	WEIGHT LB.
64033	Die Shear - 1 3/16"	2.84
64038	Die Shear - 1 5/8"	2.84
64048	STRUTSLAYR Carrying Case	6.47
64118	STRUTSLAYR Head	10.45



# PRESS SNAP™ SOIL PIPE CUTTER

**CAPACITY: CUTS 1½" TO 4" NO HUB  
AND SERVICE WEIGHT SOIL PIPE**

The Press Snap Soil Pipe Cutter adds even more versatility to your standard press tool by delivering efficient cuts on cast iron soil pipe in seconds. This tool eliminates the need to score pipe, while no lengthy lever arms makes for easy access. Compatible with all RIDGID® Standard press tools, the Press Snap Soil Pipe Cutter makes cutting cast iron soil pipe a snap.

CATALOG NO.	DESCRIPTION	WEIGHT LB.
34403R	Press Snap Soil Pipe Cutter Kit	12.0
34678	Press Snap Soil Pipe Cutter Case	3.4



**PRESSING**  
**COMPACT**  
**PRESS TOOLS**

# THE PRESSING TOOLS MORE PLUMBERS TRUST.

The RIDGID® RP 240 and 241 are built to keep you moving. Engineered lighter and more compact, they easily connect to the RIDGID Link app through your mobile device.





# RP 240 PRESS TOOL

**CAPACITY: ½" TO 1¼" (COPPER AND STAINLESS STEEL); ¾" TO 1½" (PEX); ½" TO 1" (CARBON STEEL)**

The RP 240 is the latest pistol-grip tool in the RIDGID Compact Press Tool family. This low-profile design is lightweight and balanced. Features include a forward-positioned handle for better ergonomic control. The RP 240 offers Bluetooth® connectivity (connecting the tool to the RIDGID Link app), which allows users to track numbers of cycles, battery information, and much more.



CATALOG NO.	DESCRIPTION	WEIGHT LB.
57418	RP 240 Press Tool Only	6.5

### Kits

CATALOG NO.	DESCRIPTION	WEIGHT LB.
57398	RP 240 Kit with ½" - 1¼" ProPress® Jaws	24.5
57403	RP 240 Kit with ½" - 1" ProPress Jaws	22.5
57408	RP 240 Kit with ½", ¾" and 1" PureFlow® Jaws	22.5
57413	RP 240 Kit without Jaws	14.5

All RP 240 Kits include the RP 240, 2 12V Lithium-Ion batteries, battery charger, and carrying case. (Excluding Press Tool Only Kit).

# RP 241 PRESS TOOL

**CAPACITY: ½" TO 1¼" (COPPER AND STAINLESS STEEL); ¾" TO 1½" (PEX); ½" TO 1" (CARBON STEEL)**

The RP 241 is the latest tool in the RIDGID Compact Press Tool family. This low-profile design is lightweight and balanced. Features include an ergonomic design for one-handed operation to help you easily work in tight spaces. The RP 241 offers Bluetooth® connectivity (connecting the tool to the RIDGID Link app), which allows users to track numbers of cycles, battery information, and much more.



CATALOG NO.	DESCRIPTION	WEIGHT LB.
57388	RP 241 Press Tool Only	6.5

### Kits

CATALOG NO.	DESCRIPTION	WEIGHT LB.
57363	RP 241 Kit with ½" - 1¼" ProPress Jaws	24.5
57373	RP 241 Kit with ½" - 1" ProPress Jaws	22.5
57378	RP 241 Kit with ½", ¾" and 1" PureFlow Jaws	22.5
57383	RP 241 Kit without Jaws	14.5

All RP 241 Kits include the RP 241, 2 12V Lithium-Ion batteries, battery charger, and carrying case. (Excluding Press Tool Only Kit).

### Accessories For Both RP 240 & RP 241 Press Tools

CATALOG NO.	DESCRIPTION	WEIGHT LB.
55183	12V Advanced Lithium 2.5 Ah Battery	0.5
55193	12V Advanced Lithium Battery Charger	1.5
57423	RP 240 Carrying Case Only	1.0
57393	RP 241 Carrying Case Only	1.0

### SPECIFICATIONS

- ▶ **WEIGHT**  
**RP 240**  
 Tool Only – 4.8 lbs.  
 Tool with Battery – 5.3 lbs.  
 Tool with Battery and ½" Jaws – 7.4 lbs.  
  
**RP 241**  
 Tool Only – 4.8 lbs.  
 Tool with Battery – 5.3 lbs.  
 Tool with Battery and ½" Jaws – 7.4 lbs.
- ▶ **LENGTH**  
 RP 240: 13"  
 RP 241: 15.8"
- ▶ **HEIGHT**  
 RP 240: 9.5"  
 RP 241: 4.25"
- ▶ **HYDRAULIC RAM OUTPUT**  
 5,400 lbs. (24kN)
- ▶ **CYCLE TIME**  
 ~5 Seconds
- ▶ **SERVICE INTERVAL**  
 32,000 Cycles
- ▶ **BATTERY**  
 12V Advanced Lithium 2.5  
\*Maximum Battery pack voltage (V Max) is 12V, the nominal voltage is 10.8V. Max V represents the open circuit battery voltage measured on a fully charged battery without a workload.
- ▶ **PRESSES PER CHARGE\*\***  
 140+ Crimps Per Charge
- ▶ **OPERATING TEMPERATURE RANGE**  
 15°F to 140°F (-10°C to 60°C)
- ▶ **LIGHTING**  
 Large LED Light
- ▶ **180° BARREL/JAW SWIVEL**

12V Advanced Lithium 2.5 Battery\*



\*\*Dependent upon pipe material, pipe size, and type of fitting.

**PRESSING**  
**COMPACT PRESS**  
**TOOL APPLICATIONS**

# COMPACT JAWS FOR PROPRESS®, PUREFLOW®, MEGAPRESS® OR ASTM F 1807

FOR USE WITH RP 240, RP 241, RP 210-B, RP 200-B, RP 100-B

**Jaws For ProPress (Copper and Stainless) – ½" to 1¼"**

CATALOG NO.	DESCRIPTION	WEIGHT LB.
16958	½" Jaw for ProPress	2.5
16963	¾" Jaw for ProPress	2.5
16978	1" Jaw for ProPress	2.5
31228	1¼" Jaw for ProPress	2.5



Copper and Stainless

**Jaws For PureFlow (PEX) – ¾" to 1½"**

CATALOG NO.	DESCRIPTION	WEIGHT LB.
17003	¾" Jaw for PureFlow	2.5
17008	½" Jaw for PureFlow	2.5
19813	¾" Jaw for PureFlow	2.5
17013	¾" Jaw for PureFlow	2.5
17018	1" Jaw for PureFlow	2.5
22683	1¼" Jaw for PureFlow	2.5
22688	1½" Jaw for PureFlow	2.5



PEX for Viega® PureFlow

**Jaws For MegaPress – ½" to 1"**

CATALOG NO.	DESCRIPTION	WEIGHT LB.
48433	½" Jaw for MegaPress	3.0
48438	¾" Jaw for MegaPress	3.2
48443	1" Jaw for MegaPress	2.5
—	½", ¾", 1" Jaws for MegaPress (Coming Soon)	8.5



MegaPress

**Jaws For ASTM F 1807 (PEX) – ½" to 1¼"**

CATALOG NO.	DESCRIPTION	WEIGHT LB.
22958	½" Jaw for ASTM F 1807	2.5
22968	¾" Jaw for ASTM F 1807	2.5
22973	1" Jaw for ASTM F 1807	2.5
22978	1¼" Jaw for ASTM F 1807	2.5



ASTM F1807 (PEX)

For compatible Compact Press Tools, see pages 20, 21

# TIGHT ACCESS RINGS FOR PROPRESS® OR MEGAPRESS®

## FOR PROPRESS COPPER, STAINLESS STEEL AND CARBON STEEL FITTINGS

- ▶ V1 and V2 Kits are designed for RIDGID® Standard Press Tools (RP 350, RP 351, RP 342-XL, RP 340, 320-E, CT400)
- ▶ C1 Compact Kits are designed for RIDGID Compact Press Tools (RP 240, RP 241)
- ▶ Rings can be used with all RIDGID Press Tools (Standard and Compact)
- ▶ Ball-tip actuator swivels 180° for use in tight spaces

### Kits

CATALOG NO.	MODEL NO.	DESCRIPTION	WEIGHT LB.
28048	V1/C1	V1/C1 Combo Kit, ½"-1¼" Rings for ProPress	12.9
28043	C1	C1 Kit, ½"-1¼" Rings for ProPress	8.1

### Rings for ProPress – ½" to 1¼"

CATALOG NO.	ACTUATOR	DESCRIPTION	WEIGHT LB.
27998	V1/C1	½" Ring for ProPress	0.5
28003	V1/C1	¾" Ring for ProPress	0.8
28008R	V1/C1	1" Ring for ProPress	1.0
28013	V1/C1	1¼" Ring for ProPress	1.0

### Rings for MegaPress – ½" to ¾"

CATALOG NO.	ACTUATOR	DESCRIPTION	WEIGHT LB.
Coming Soon	C1	½" Ring for MegaPress	1.0
Coming Soon	C1	¾" Ring for MegaPress	1.0
Coming Soon	C1	Kit, ½", ¾", 1" Jaws and ½", ¾" Rings for MegaPress	15.0
Coming Soon	C1	½", ¾" Rings for MegaPress and C1 Actuator	6.5

### Actuators

CATALOG NO.	ACTUATOR	DESCRIPTION	WEIGHT LB.
26163	C1	C1 Actuator for ½" - 1¼"	2.1

### Accessories

CATALOG NO.	MODEL NO.	DESCRIPTION	WEIGHT LB.
28028	V1/C1	Carrying Case #1 for ½" - 1¼"	3.0



C1 Combo Kit, ½", ¾", 1", 1¼" Rings



For compatible Standard and Compact Press Tools, see pages 10, 11, 20, 21

**PRESSING**  
**MANUAL PRESS TOOLS**

# MANUAL PRESS TOOLS

**CAPACITY: ½" TO 1"**

- ▶ Available sizes: ½", ¾", 1" and ½" and ¾" combo tool
- ▶ Easily adjustable lock screw for tool calibration
- ▶ All tools come standard with a go/no-go gauge

ASTM F 1807 Traditional PEX Crimp Tool



ASTM F 1807 Close Quarters PEX Crimp Tool

CATALOG NO.	DESCRIPTION	WEIGHT LB.
23448	½" PEX Crimp Tool	2.9
23458	¾" PEX Crimp Tool	2.9
23463	1" PEX Crimp Tool	3.0
23468	½" and ¾" PEX Combo Tool	3.5
43853	½" PEX Close Quarters Crimp Tool	2.1
43858	¾" PEX Close Quarters Crimp Tool	2.3

**Accessories**

CATALOG NO.	DESCRIPTION	WEIGHT LB.
29583	¾" - 1" ASTM F 1807 Gauge	1.0

**LESS FORCE**

33% less force required compared to traditional PEX crimp tools.

**LIGHTER WEIGHT**

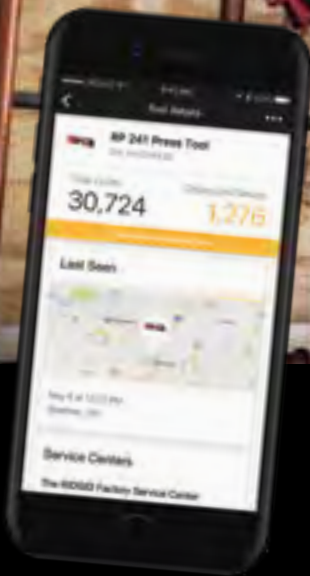
Glass-filled polycarbonate handles make the tool 20% lighter than traditional PEX crimp tools.

**ALL DAY COMFORT**

E<sup>3</sup>® (Expert Engineered Ergonomics) handles provide increased feel and usability.

# RIDGID LINK.

DOWNLOAD THE APP AND GET CONNECTED.



**SMARTER TOOLS WITH THE RIDGID LINK APP.**  
Track tool data and maximize jobsite performance.



## COUNT

- Track tool usage with smart cycle counter

## SERVICE

- Know how many crimps until service
- Use location to find a RIDGID® service center near you

## BATTERY

- App shows real-time battery life

## LOCATE

- See the location of where your RIDGID Link enabled tool was last seen

## SUPPORT

- Easily find operator's manuals, videos and more

## HOW TO GET STARTED:

1. Download the RIDGID Link app from Apple Store or Google Play.
2. Open the app and sign in using your RIDGID.com credentials or create a new account.
3. Follow on-screen instructions to register your tool.



Contact Information: 888.743.4333 | RIDGID.com

**RIDGID**

