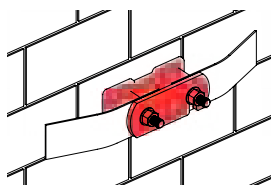




EBC 100



## Disconnecting Link

The disconnecting link provides a temporary break in the earth connection to allow inspection and testing of the earth electrode.

L mm	W mm	H mm	Unit Weight kg	Pack Quantity	Part Number
120	45	45	0.60	1	EBC 100

### Material:

**Bar:** 50 x 6mm hard drawn copper bar to BS EN 13601.

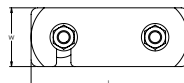
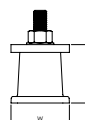
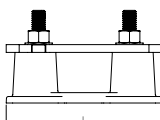
**Base:** Plastic.



BS EN 62561-1 Class H



Tightening torque 20 Nm



## Double Row Telecommunication Earth Bars

The A. N. Wallis double row telecommunication earth bars provide a common grounding point within a telecommunications room and are usually located on the wall of a data room. These earth bars are available with different hole pattern spacing's, depending on your requirement and are made of high conductivity copper and can be tin-plated to help prevent against corrosion. The earth bars will also come pre-assembled with brackets and insulators for quick and easy installation.

