

# Business aim

*“The business aim of the Elpress Group is to provide, primarily to professional users, qualified material and knowledge concerning electrical applications, with a high level of service and product expertise.”*

---

## Contact us

### Head office

#### Elpress AB

Industrivägen 15  
P.O. Box 186  
SE-872 24 Kramfors, Sweden  
Tel +46 612 71 71 00  
sales@elpress.se

#### Customer support

Tel +46 612 71 71 70  
support@elpress.se

#### Order

Tel +46 612 71 71 70  
order@elpress.se

### Subsidiaries

#### Elpress GmbH

Kränkelsweg 24  
DE-417 48 Viersen, Germany  
Tel +49 2162 93 19-0  
sales@elpress.de  
www.elpress.de

#### Elpress A/S

Randersvej 16  
DK-8600 Silkeborg, Denmark  
Tel +45 8681 61 11  
salg@elpress.dk  
www.elpress.dk

#### Elpress AS

Bruket 31, Pb 79  
N-1621 Gressvik, Norway  
Tel +47 91 68 55 02  
sales@elpress.no  
www.elpress.no

#### Elpress Inc.,

900 Oakmont Lane, Suite 207,  
Westmont IL 60559 USA  
Tel: +1-331-814 2910  
Fax: +1-331-814 2914  
sales@elpress.us  
www.elpress.us

#### Elpress (Beijing)

**Electrical Components Co., Ltd**  
Rm 1605, Diyang Tower,  
No. H2 DongsanhuanBei Lu,  
Chaoyang District,  
Beijing 100027, P.R. China  
Tel:+86 10 5979 6187  
Fax:+86 10 6438 5279  
info@elpress.com.cn  
www.elpress.com.cn

Elpress has been developing, manufacturing and marketing complete cable crimping systems for electrical connectors since 1959.

The Elpress Group, consisting of Elpress and ABIKO business areas, is owned by Lagercrantz Group AB. Elpress head office, factory and warehouse are located in Kramfors, Sweden.

Subsidiaries Elpress GmbH, Elpress A/S, Elpress AS, Elpress (Beijing) Ltd. and Elpress Inc. with local warehouses in Silkeborg/Denmark, Beijing/China and Chicago/USA.

The information contained in this catalogue is for commercial use to select products only. It is not intended for use in QA instructions, production drawings, instruction manuals or likewise. If such documentation is required, please contact your nearest Elpress representative or Elpress directly. Although every effort has been made to ensure correct and updated information at time of printing, Elpress makes reservation for misprints, wrong or outdated information and changes. Elpress reserve the right to change, update or discontinue products without prior notice.

This catalogue is the property of Elpress. Any reproduction in full, part or of pictures, is forbidden without prior written permission from Elpress AB.

---

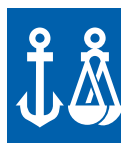
# Table of content

	<b>Pre-insulated 0.1 - 6 mm<sup>2</sup> terminals with associated tools</b>	<b>01</b>
	<b>End terminals 0.14 - 50 mm<sup>2</sup> with associated tool</b>	<b>02</b>
	<b>Uninsulated terminals 0.15 - 10 mm<sup>2</sup> with associated tools</b>	<b>03</b>
	<b>Cu terminals 0.75 - 1000 mm<sup>2</sup></b>	<b>04</b>
	<b>Al and AlCu terminals 16 - 1200 mm<sup>2</sup></b>	<b>05</b>
	<b>Tools for Cu, Al and AlCu terminals</b>	<b>06</b>
	<b>Overhead line connectors</b>	<b>07</b>
	<b>Shearbolt terminals for low and medium voltage</b>	<b>08</b>
	<b>Insulation kit for splicing</b>	<b>09</b>
	<b>Cutting and insulation stripping tools</b>	<b>10</b>
	<b>Deep earthing</b>	<b>11</b>
	<b>General information</b>	<b>12</b>
	<b>System Elpress</b>	<b>13</b>

# Certification and standards



**IEC - International Electrical Commission** - issues international standards which, although not always compulsory, do have strong influence and are used as a basis within the international terminal trade.



**DNV - Det Norske Veritas**  
Elpress KR/KS, KRF/KSF and KRT/KST terminals meet DNV's rules for classification of ships and Det Norske Veritas' Offshore Standards. The terminals are approved for installations on ships and mobile "offshore" units.



UL is an American standard which is also internationally accepted. KR/KS, KRF/KSF, KRFS, KRFN, KRT/KST UL approved in accordance with file no. E205350.

## Environment policy

Elpress products and services, are designed to minimise environmental impact, to protect limited resources and to take the life-cycle perspective into consideration in connection with:

- Product development.
- Manufacturing.
- Use and withdrawal of products.

Each and every Elpress employee shall prioritize the personal responsibility for safety, quality and the environment within his daily work routine. Information and education will constitute normal activity for increased awareness.

Our suppliers and commissioned partners are chosen and influenced in such a way that they can comply with and add value to our Policy.

Our customers are informed about our environmental dedication and our partners have all the necessary knowledge to assist and advise all parties of the distribution chain and safeguard the proper use, stocking and final disposal of our products.

We continuously evaluate the results of our Policy and openly distribute information on our work and impact on the environment.

Our environment work has resulted in Elpress being certified to ISO 14001 since 2004.

Our certificate, with number EMS 531083, is issued by the internationally recognized BSI, British Standards Institution, of England.

## Quality

For us, quality means trying all the time to be the best in the business. That's why we are constantly developing our products, methods and ourselves, since knowledge is perhaps the most important component for achieving the highest quality. Our work on quality has resulted in Elpress being certified to ISO 9001 since 1992.

Our certificate, with number FM20987, is issued by the internationally recognized BSI, British Standards Institution, of England.

## Verification of products

There are quite a lot of different test standards and approval routines that may be applied on cable connectors and terminations. Due to this and the variation in contents between standards from different countries one has to make a selection.

Elpress had previously applied primarily Swedish, UK and German standards but lately IEC and EN Standards, where the latter rapidly will substitute the old national standards. In many cases, there are also UL, DNV-Det Norske Veritas or other approvals on our products.



## Pre-insulated 0.1 - 6 mm<sup>2</sup> terminals with associated tools

General information about pre-insulated terminals .....	2
Hand tools for pre-insulated terminals .....	3
Ring terminals 0.1 - 6 mm <sup>2</sup> .....	4
Fork terminals 0.1 - 6 mm <sup>2</sup> .....	5
Flanged fork terminals 0.5 - 2.5 mm <sup>2</sup> .....	5
Hook terminals 0.5 - 2.5 mm <sup>2</sup> .....	6
Pin terminals 0.1 - 6 mm <sup>2</sup> .....	6
Blade terminals 0.25 - 6 mm <sup>2</sup> .....	7
Through connectors 0.25 - 6 mm <sup>2</sup> .....	7
Through connectors with heat shrink insulation 0.5 - 6 mm <sup>2</sup> .....	8
Parallel through connectors 0.5 - 6 mm <sup>2</sup> .....	8
Receptacles rolled type 0.1 - 6 mm <sup>2</sup> .....	9
Multiple tabs rolled type (piggy back) 0.5 - 2.5 mm <sup>2</sup> .....	9
Receptacles fully insulated rolled type 0.5 - 6 mm <sup>2</sup> .....	10
Blade 0.5 - 6 mm <sup>2</sup> .....	10
End connector sleeves fully insulated 1 - 6 mm <sup>2</sup> .....	11
Bullet 0.25 - 6 mm <sup>2</sup> .....	11
End connector sleeves fully insulated 0.25 - 6 mm <sup>2</sup> .....	11
Assortment boxes - pre-insulated terminals .....	12
RPL605, PL1001 and PL451M .....	12
PL450 and HB150 .....	13
Hobby tools for pre-insulated and uninsulated 0.5 - 6 mm <sup>2</sup> terminals .....	14
T50, T51 and T52 Hobby tool .....	14
Tools for pre-insulated 0.14 - 2.5 mm <sup>2</sup> terminals .....	15
DSA0115, DSA0725 and ESAQ0760 - die nest gauge .....	15
Miniforce tools for pre-insulated .....	16
GSEA0340C and GSW0560C .....	16
GSA0760 and GSA0760C .....	17
Battery-powered crimping tools .....	18
PVL130P - Elpress Mini .....	18
PVL130S - Elpress Mini .....	19
Elpress Mobile - tool with interchangeable dies .....	20
Elpress Mobile, Mobile Installation & Mobile DataCom .....	20
Mobile Solar Kit and Mobile Box .....	21
Additional dies for Elpress Mobile .....	22

# General information about pre-insulated terminals



## System Elpress

System Elpress consists of terminals and tools that are designed and tested together to give a certified crimping result. This ensures that users will feel confident when using our systems, and that a secure connection will be achieved through the proper handling of our products.

## Pre-insulated terminals

Elpress ring, fork and pin terminals are made of high-class copper 99.95%. The tab and bullet terminals are made of brass or tin-bronze. All terminals are then electrolytically tin-plated for maximum corrosion protection. The terminal's neck is brazed and annealed, which means it can be crimped in any direction. The metal in the receptacles' neck is double folded. This means that the finished terminal has excellent mechanical strength and low resistance.

## Insulation material

Elpress insulation sleeves are usually made from halogen-free polycarbonate, PC, which has excellent deformation properties. Furthermore, it maintains its vibration support up to high temperatures. Caution must be exercised in case of alkaline exposure. Some types of terminals have insulation of PA, nylon, which is also halogen-free, or PVC (not halogen free). The colour of the insulation sleeve indicates the cross-sectional area that the terminal is intended for:

Bright yellow sleeve	0.1 - 0.5 mm <sup>2</sup>
Green sleeve*	0.25 - 0.75 mm <sup>2</sup>
Red sleeve	0.5 - 1.5 mm <sup>2</sup>
Blue sleeve	1.5 - 2.5 mm <sup>2</sup>
Yellow sleeve	4-6 mm <sup>2</sup>

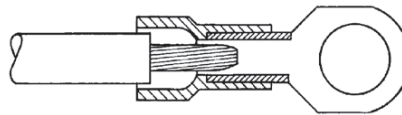
\* or transparent white

The table below shows properties for Elpress pre-insulated terminals insulation. Note the properties are general since the influences of environment, temperature, etc. can affect the terminals. Polycarbonate, PC, and polyamide, PA, are halogen-free, i.e. they do not contain any of the substances fluoride, chlorine, bromide or iodine.

Insulation material	Max. temperature	Halogen-free	Flammability class, UL94
PA (Polyamide)	105°	Yes	V0
PC (Polycarbonate)	115°	Yes	V2
PVC (Polyvinyl chloride)	60°	No, chlorine	V0

## Easy-entry

Elpress insulation sleeves are usually of the easy-entry type, which means it guides the conductor strands properly into the terminal neck. The risk of back-folded and stray strands, possibly resulting in flash-overs or reduced electrical properties, is therefore eliminated.



Easy-entry.

## Labelling of pre-insulated terminals

Elpress pre-insulated terminals are labelled with logo, cross sectional area and any applicable screw diameter to facilitate work and controllability. When contact crimping pre-insulated terminals, Elpress crimping dies/tools leave an imprint in the insulation sleeve so that all crimped terminals can be inspected retrospectively in accordance with the requirements of many standards.



Samples of Elpress crimped pre-insulated terminals.

## Designation example

### Cat no. A1532R (E, FLS, G etc.)

A = pre-insulated  
 15 = cross sectional area (1.5 mm<sup>2</sup>)  
 32 = characteristic size (Hole 3.2 mm)  
 E = end connectors  
 FLS = receptacles, rolled type  
 FLSF = receptacles, fully insulated rolled type  
 FLSH = multiple tabs, rolled type (piggy back)  
 FLST = receptacles, rolled type, tin-bronze  
 G = fork terminals  
 GB = flanged fork terminals  
 H = tabs (male)  
 HA = bullets (male)  
 HO = sockets (female)  
 K = hook terminals  
 PSK = parallel connectors  
 R = ring terminals  
 SF = blade terminals  
 SFB = blade terminals, flanged  
 SFK = blade terminals, short pin  
 SFL = blade terminals, long pin  
 SFN = blade terminals, with tab  
 SR = pin terminals  
 SRK = pin terminals, short pin  
 SK = through connectors  
 SKW = through connectors with heat shrink insulation



Crimping of Elpress pre-insulated ring terminal with hand tool GSA0760.



# Hand tools for pre-insulated terminals

## Mechanical tools

In the development of a mechanical crimping tool at Elpress, we strive for the best quality and ergonomics in the actual tool, and the best characteristics in the crimped terminal. The tools have a built-in locking system (not the hobby tools) that ensures that the entire crimping process is completed - a prerequisite for professional and quality-assured work.



Elpress Mobile, professional tool with interchangeable dies for the installer or service technician.

## Miniforce-tools

With the unique Miniforce tools, a new level has been established regarding ergonomic adaptation to the user and low force requirements. This has resulted in a decrease in the grip forces by up to 45% and is the result of an advanced development process where minimisation of the risks of work-related injuries and the best ergonomics have been the deciding factors.



Miniforce type C has longer handles to facilitate two-handed operation, which is often a simple and natural way to reduce the loads. Electrical crimping tools and terminals together constitute a contact crimping system where crimping results are continuously checked against the requirements of established standards such as IEC 60352-2, SEN 245010, DIN 46429, IEC 61238-1 etc. Many of the manual tools have symmetrical crimp positions that make it possible to work from both sides - something that is important for left-handed users. The tools in the Miniforce, D and 50 series are made of very high-grade hardened steel with a black oxide finish and are laser marked.



## Certification of crimping tools

For quality assurance of our tools, we certify the manufacture of our crimping tools, both hand tools, type Gxx, i.e. Miniforce tools, and type Dxx.



## What do we certify?

Certification of the crimping tools means that each individual tool is documented at the final assembly and inspection stage with respect to:

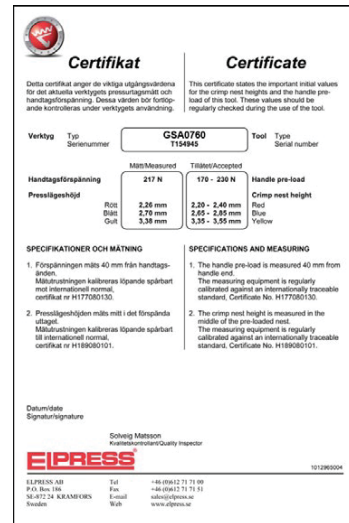
- **handle pre-load**, which is the force needed to ensure that the lock, which prevents a crimp from being interrupted, is not released too early.
- **crimp die nest heights**, i.e. the maximum height measurements which can be measured in each indentation with the dies pressed together.

## Why certification?

The certificate that accompanies the tool serves several functions:

- crimping tools are often directly introduced upon procurement in a quality management system. The tool's status at procurement shall of course be the first thing noted, to then be followed by regular checks where potential changes can be discovered and addressed.
- the certificate shows that each individual tool meets the requirements of the tool's basic specifications.
- the certificate states what the most important characteristics are that shall be followed up.

Elpress' service department offers the possibility of continued follow-up of the quality of the tools.



Certificate that accompanies the tool.



Get your certificate.

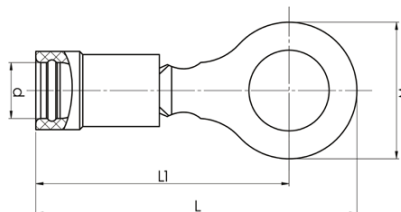


Elpress ergonomic Miniforce tool.



## Ring terminals 0.1 - 6 mm<sup>2</sup>

- Material: Cu 99.95%, tin plated Cu/Sn, brazed neck.
- PC insulation has easy-entry, PC and PA are halogen-free.

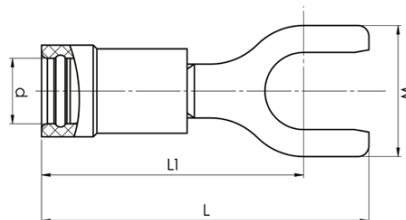


mm <sup>2</sup> (Cu)	AWG Cu	Name	Screw	W mm	d	L	L1	t	s	Tool	Insulation material	Easy Entry	Pcs/pack
0,1-0,5	26-20	A0522R	M2,5	5,4	2	16	14	0,5	6	DSA0115	PA	No	100
0,1-0,5	26-20	A0532R	M3	5,4	2	16	14	0,5	6	DSA0115	PA	No	100
0,1-0,5	26-20	A0543R	M4	6,5	3	19	16	0,5	6	DSA0115	PA	Yes	100
0,1-0,5	26-20	A0553R	M5	8	2	19	16	0,5	6	DSA0115	PA	Yes	100
0,25-0,75	24-20	A0832R	M3	5,5	3,2	18	15	0,5	7	DSA0115	PC	Yes	100
0,25-0,75	24-20	A0837R	M3,5	6,2	3,2	21	17,5	0,5	7	DSA0115	PC	Yes	100
0,25-0,75	24-20	A0843R	M4	7,5	3,2	21	17,5	0,5	7	DSA0115	PC	Yes	100
0,25-0,75	24-20	A0853R	M5	9	3,2	22	17,5	0,5	7	DSA0115	PC	Yes	100
0,5-1,5	20-16	A1532R	M3	5,5	4	19	16	0,7	7	GSA0760	PC	Yes	100
0,5-1,5	20-16	A1537R	M3,5	6	4	19	16	0,7	7	GSA0760	PC	Yes	100
0,5-1,5	20-16	A1543R	M4	7	4	20,5	17	0,7	7	GSA0760	PC	Yes	100
0,5-1,5	20-16	A1553R	M5	9	4	22,5	18	0,7	7	GSA0760	PC	Yes	100
0,5-1,5	20-16	A1565R	M6	11	4	26,5	21	0,7	7	GSA0760	PC	Yes	100
0,5-1,5	20-16	A1585R	M8	14	4	27,5	20	0,7	7	GSA0760	PC	Yes	100
0,5-1,5	20-16	A1510R	M10	16,5	4	30,5	22	0,7	7	GSA0760	PC	Yes	100
1,5-2,5	15-14	A2532R	M3	5,5	4,5	19	16	0,8	8	GSA0760	PC	Yes	100
1,5-2,5	15-14	A2537R	M3,5	6,2	4,5	19	16	0,8	8	GSA0760	PC	Yes	100
1,5-2,5	15-14	A2543R	M4	7	4,5	21	17,5	0,8	8	GSA0760	PC	Yes	100
1,5-2,5	15-14	A2553R	M5	9	4,5	23	18	0,8	8	GSA0760	PC	Yes	100
1,5-2,5	15-14	A2565R	M6	11	4,5	26	20,5	0,8	8	GSA0760	PC	Yes	100
1,5-2,5	15-14	A2585R	M8	14	4,5	28	21	0,8	8	GSA0760	PC	Yes	100
1,5-2,5	15-14	A2510R	M10	16,5	4,5	30,5	22	0,75	8	GSA0760	PC	Yes	100
1,5-2,5	15-14	A2513R	M12	18	4,3	34	26	0,75	8	GSA0760	PA	Yes	100
4-6	12-10	A4643R	M4	7,8	6,4	24,5	20,5	1	9	GSA0760	PC	Yes	100
4-6	12-10	A4653R	M5	9	6,4	25	20,5	1	9	GSA0760	PC	Yes	100
4-6	12-10	A4665R	M6	11	6,4	28,5	23	1	9	GSA0760	PC	Yes	100
4-6	12-10	A4685R	M8	14	6,4	30,5	23,5	1	9	GSA0760	PC	Yes	100
4-6	12-10	A4610R	M10	17	6,4	34	25,5	1	9	GSA0760	PC	Yes	50
4-6	12-10	A4613R	M12	19,2	6,8	40	31	1	9	GSA0760	PC	Yes	50

t = palm thickness, s = strip length

## Fork terminals 0.1 - 6 mm<sup>2</sup>

- Material: Cu 99.95%, tin plated Cu/Sn, brazed neck.
- PC insulation has easy-entry, PC and PA are halogen-free.

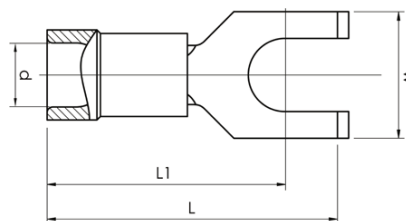


mm <sup>2</sup> (Cu)	AWG Cu	Name	Screw	W mm	d	L	L1	t	s	Tool	Insulation material	Easy Entry	Pcs/pack
0,1-0,5	26-20	A0532G	M3	5,5	3,2	18	15	0,5	6	DSA0115	PA	No	100
0,25-0,75	24-20	A0832G	M3	5,5	3,2	18	15	0,5	7	DSA0115	PC	Yes	100
0,25-0,75	24-20	A0837G	M3,5	6,2	3,2	21	17,5	0,5	7	DSA0115	PC	Yes	100
0,25-0,75	24-20	A0843G	M4	6,2	3,2	21	17,5	0,5	7	DSA0115	PC	Yes	100
0,5-1,5	20-16	A1532G	M3	5,5	4	19	16	0,7	7	GSA0760	PC	Yes	100
0,5-1,5	20-16	A1537G	M3,5	6,2	4	21	17,5	0,7	7	GSA0760	PC	Yes	100
0,5-1,5	20-16	A1537GS	M3,5	5,5	4	21,2	17	0,7	7	GSA0760	PC	Yes	100
0,5-1,5	20-16	A1543G	M4	7	4	21	17,5	0,7	7	GSA0760	PC	Yes	100
0,5-1,5	20-16	A1553G	M5	9	4	22,5	18	0,7	7	GSA0760	PC	Yes	100
0,5-1,5	20-16	A1565G	M6	11	4	26,5	21	0,7	7	GSA0760	PC	Yes	100
1,5-2,5	16-14	A2532G	M3	5,5	4,5	18	15	0,8	8	GSA0760	PC	Yes	100
1,5-2,5	16-14	A2537G	M3,5	6,2	4,5	21	17,5	0,8	8	GSA0760	PC	Yes	100
1,5-2,5	16-14	A2537GS	M3,5	5,5	4,5	21,2	17	0,8	8	GSA0760	PC	Yes	100
1,5-2,5	16-14	A2543G	M4	7	4,5	21	17,5	0,8	8	GSA0760	PC	Yes	100
1,5-2,5	16-14	A2553G	M5	9	4,5	23	18	0,8	8	GSA0760	PC	Yes	100
1,5-2,5	16-14	A2565G	M6	11	4,5	25	19,5	0,8	8	GSA0760	PC	Yes	100
4-6	12-10	A4643G	M4	7,8	6,4	24	20	1	9	GSA0760	PC	Yes	100
4-6	12-10	A4653G	M5	9	6,4	25	20,5	1	9	GSA0760	PC	Yes	100
4-6	12-10	A4665G	M6	11	6,4	27	21,5	1	9	GSA0760	PC	Yes	100
4-6	12-10	A4685G	M8	14	6,4	30	23	1	9	GSA0760	PC	Yes	100
4-6	12-10	A4610G	M10	18	6,4	36	27,5	1	9	GSA0760	PA	Yes	100

t = palm thickness, s = strip length

## Flanged fork terminals 0.5 - 2.5 mm<sup>2</sup>

- Material: Cu 99.95%, tin plated Cu/Sn, brazed neck.
- PC insulation has easy-entry, PC is halogen free.



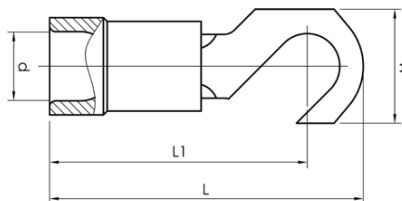
mm <sup>2</sup> (Cu)	AWG Cu	Name	Screw	W mm	d	L	L1	t	s	Tool	Insulation material	Easy Entry	Pcs/pack
0,5-1,5	20-16	A1537GB	M3,5	6,2	4	21	17,5	0,7	7	GSA0760	PC	Yes	100
0,5-1,5	20-16	A1543GB	M4	6,2	4	21	17,5	0,7	7	GSA0760	PC	Yes	100
1,5-2,5	16-14	A2543GB	M4	6,2	4,5	21	17,5	0,8	7	GSA0760	PC	Yes	100
1,5-2,5	16-14	A2553GB	M5	9	4,5	22,5	17,5	0,8	7	GSA0760	PC	Yes	100

t = palm thickness, s = strip length



## Hook terminals 0.5 - 2.5 mm<sup>2</sup>

- Material: Cu 99.95%, tin plated Cu/Sn, brazed neck.
- PC insulation has easy-entry, PC is halogen free.

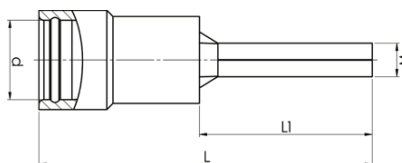


mm <sup>2</sup> (Cu)	AWG Cu	Name	Screw	W mm	d	L	L1	t	s	Tool	Insulation material	Easy Entry	Pcs/pack
0,5-1,5	20-16	A1543K	M4	7	4	20,5	17	0,7	7	GSA0760	PC	Yes	100
1,5-2,5	16-14	A2543K	M4	7,5	4,5	21	17	0,8	8	GSA0760	PC	Yes	100

t = palm thickness, s = strip length

## Pin terminals 0.1 - 6 mm<sup>2</sup>

- Material: Cu 99.95%, tin plated Cu/Sn, brazed neck.
- PC insulation has easy-entry, PC and PA are halogen-free.



mm <sup>2</sup> (Cu)	AWG Cu	Name	W mm	d	L	L1	s	Tool	Insulation material	Easy Entry	Pcs/pack
0,1-0,5	26-20	A0514SR	1,2	2,2	18	8	6	DSA0115	PA	No	100
0,25-0,75	24-20	A0819SR	1,8	3,2	22	12	7	DSA0115	PC	Yes	100
0,25-0,75	24-20	A0819SRK	1,8	3,2	18,5	8,5	7	DSA0115	PC	Yes	100
0,5-1,5	20-16	A1519SR	1,7	4	22	12	7	GSA0760	PC	Yes	100
0,5-1,5	20-16	A1519SRK	1,7	4	18,5	8,5	7	GSA0760	PC	Yes	100
1,5-2,5	16-14	A2519SR	1,9	4,5	21,5	11,5	8	GSA0760	PC	Yes	100
1,5-2,5	16-14	A2519SRK	1,9	4,5	18,5	8,5	8	GSA0760	PC	Yes	100
4-6	12-10	A4630SR	2,7	6,4	27	14	9	GSA0760	PC	Yes	100

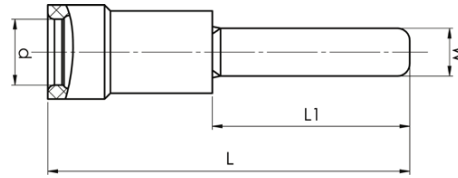
s = strip length

## Blade terminals 0.25 - 6 mm<sup>2</sup>

- Material: Cu 99.95%, tin plated Cu/Sn, brazed neck.
- PC insulation has easy-entry, PC is halogen free.



01

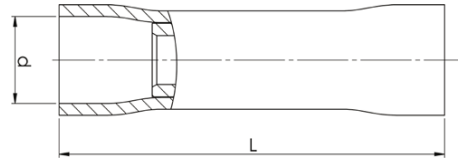


mm <sup>2</sup> (Cu)	AWG Cu	Name	W mm	d	L	L1	t	s	Insulation material	Easy Entry	Tab	Tool	Pcs/pack
0,25-0,75	24-20	A08255FK	2,5	3,2	20	10	0,5	7	PC	Yes	No	DSA0115	100
0,5-1,5	20-16	A1518SFL	2,3	4,0	27,2	18	0,8	7	PVC	Yes	No	GSA0760	100
0,5-1,5	20-16	A1529SF	2,9	4	22	12	0,7	7	PC	Yes	No	GSA0760	100
0,5-1,5	20-16	A1529SFN	2,9	4	22	12	0,7	7	PC	Yes	Yes	GSA0760	100
0,5-1,5	20-16	A1530SFB	3	4	25,8	16,8	0,8	7	PVC	Yes	No	GSA0760	100
1,5-2,5	16-14	A2524SFL	2,3	4,5	27,2	18	0,8	8	PVC	Yes	No	GSA0760	100
1,5-2,5	16-14	A2529SF	2,9	4,3	21,5	11,5	0,8	8	PC	Yes	No	GSA0760	100
1,5-2,5	16-14	A2529SFN	2,9	4,3	22	12	0,8	8	PC	Yes	Yes	GSA0760	100
1,5-2,5	16-14	A2530SFB	3	4,5	25,8	16,8	0,7	8	PVC	Yes	No	GSA0760	100
4-6	12-10	A4640SF	4	6,8	27,5	13,5	1	9	PVC	Yes	No	GSA0760	100
4-6	12-10	A4645SFB	4,6	6,8	30,3	16,8	1	9	PVC	No	No	GSA0760	100

t = palm thickness, s = strip length

## Through connectors 0.25 - 6 mm<sup>2</sup>

- Material: Cu 99.95%, tin plated Cu/Sn, contact sleeve of Cu pipe
- Halogen-free PC insulation without Easy-entry.

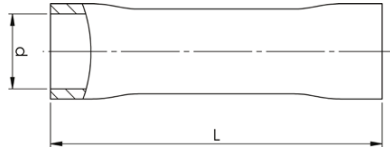


mm <sup>2</sup> (Cu)	AWG Cu	Name	d mm	L	s	Tool	Insulation material	Easy Entry	Pcs/pack
0,25-0,75	24-20	A0824SK	2,9	24,5	7	DSA0115	PC	No	100
0,5-1,5	20-16	A1525SK	3,4	24	7	GSA0760	PC	No	100
1,5-2,5	16-14	A2527SK	4,3	26	8	GSA0760	PC	No	100
4-6	12-10	A4652SK	6,5	33	9	GSA0760	PC	No	50

s = strip length

## Through connectors with heat shrink insulation 0.5 - 6 mm<sup>2</sup>

- Material: Cu 99.95%, tin plated Cu/Sn, contact sleeve of Cu pipe.
- Insulation of halogen-free PA, hot melt adhesive inside the insulation.



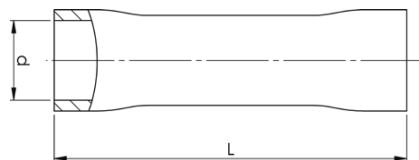
mm <sup>2</sup> (Cu)	AWG Cu	Name	d mm	L	s	Tool	Insulation material	Pcs/pack
0,5-1,5	20-16	A1535SKW	3,7	31,5	8	GSW0560C	PA	25
1,5-2,5	16-14	A2535SKW	4,6	31,5	8	GSW0560C	PA	25
4-6	12-10	A4650SKW	6,5	37,5	9	GSW0560C	PA	25

s = strip length

After crimping and heating with a hot air gun, a water proof terminal, glued to the cable and the connector, is achieved.

## Parallel through connectors 0.5 - 6 mm<sup>2</sup>

- Material: Cu 99.95%, tin plated Cu/Sn, contact sleeve of Cu pipe.
- Insulation of halogen-free PA.



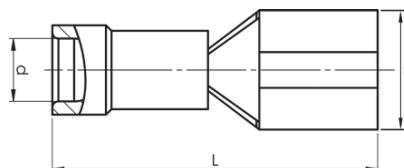
mm <sup>2</sup> (Cu)	AWG Cu	Name	d mm	L	s	Tool	Insulation material	Pcs/pack
0,5-1,5	20-20	A1515PSK	3,2	17	7	GSA0760	PA	100
1,5-2,5	16-16	A2517PSK	4	17	8	GSA0760	PA	100
4-6	12-10	A4634PSK	5,6	21	9	GSA0760	PA	100

s = strip length

Type PSK must be crimped with GSA0760 (C) and with two crimps.

## Receptacles rolled type 0.1 - 6 mm<sup>2</sup>

- Material: brass, tin plated Cu/Sn, brazed neck.
- PC and PA insulation have easy-entry, PC and PA are halogen-free.

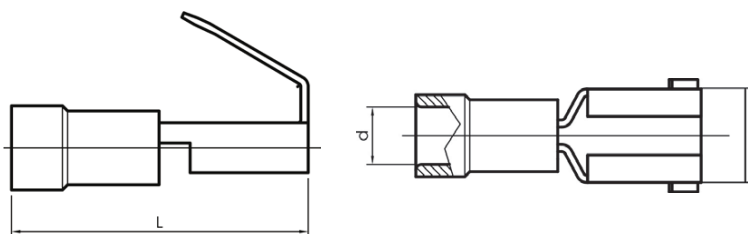


mm <sup>2</sup> (Cu)	AWG Cu	Name	W mm	d	L	s	For tab	Tool	Insulation material	Neck type	Easy Entry	Pcs/pack	
0,1-0,5	26-20	A0503FLS5	3,7	2,2	16,4	7	2,8x0,5	DSA0115	PVC	Brazed	Yes	Brass, Cu/Sn	100
0,1-0,5	26-20	A0503FLS8	3,7	2,2	16,4	7	2,8x0,8	DSA0115	PVC	Brazed	Yes	Brass, Cu/Sn	100
0,5-1,5	20-16	A1503FLS5	3,2	4	18	7	2,8x0,5	GSA0760	PC	Brazed	Yes	Brass, Cu/Sn	100
0,5-1,5	20-16	A1503FLS8	3,2	4,0	18	7	2,8x0,8	GSA0760	PC	Brazed	Yes	Brass, Cu/Sn	100
0,5-1,5	20-16	A1505FLS5	5	3,2	19,5	7	4,8x0,5	GSA0760	PA	Brazed	Yes	Brass, Cu/Sn	100
0,5-1,5	20-16	A1505FLS8	5	3,2	19,5	7	4,8x0,8	GSA0760	PA	Brazed	Yes	Brass, Cu/Sn	100
0,5-1,5	20-16	A1507FLS	7,6	4	20,5	7	6,3x0,8	GSA0760	PC	Brazed	Yes	Brass, Cu/Sn	100
0,5-1,5	20-16	A1507FLST	7,6	4	20,5	7	6,3x0,8	GSA0760	PC	Brazed	Yes	Tin bronze (phosphor bronze), Cu/Sn	100
1,5-2,5	16-14	A2505FLS5	5,6	4,5	20	8	4,8x0,5	GSA0760	PA	Brazed	Yes	Brass, Cu/Sn	100
1,5-2,5	16-14	A2505FLS8	5	3,9	19,5	8	4,8x0,8	GSA0760	PA	Brazed	Yes	Brass, Cu/Sn	100
1,5-2,5	16-14	A2507FLS	7,6	4,5	20,5	8	6,3x0,8	GSA0760	PC	Brazed	Yes	Brass, Cu/Sn	100
1,5-2,5	16-14	A2507FLST	7,6	4,5	20,5	8	6,3x0,8	GSA0760	PC	Brazed	Yes	Tin bronze (phosphor bronze), Cu/Sn	100
4-6	12-10	A4607FLS	7,6	6,4	24	9	6,3x0,8	GSA0760	PC	Brazed	Yes	Brass, Cu/Sn	100
4-6	12-10	A4609FLS	10,9	6,6	30,1	9	9,5x1,2	GSA0760	PA	Reinforcement sleeve	Yes	Brass, Cu/Sn	100

s = strip length

## Multiple tabs rolled type (piggy back) 0.5 - 2.5 mm<sup>2</sup>

- Material: brass/Cu, tin plated Cu/Sn.

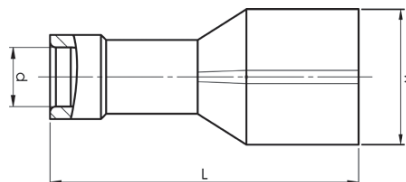


mm <sup>2</sup> (Cu)	AWG Cu	Name	W mm	d	L	s	For tab	Insulation material	Neck type	Easy Entry	Pcs/pack
0,5-1,5	20-16	A1507FLSH	6,9	3,2	22	7	6,3x0,8	PA	Reinforcement sleeve	Yes	100
1,5-2,5	16-14	A2507FLSH	6,9	3,9	22	8	6,3x0,8	PA	Reinforcement sleeve	No	100

s = strip length

## Receptacles fully insulated rolled type 0.5 - 6 mm<sup>2</sup>

- Material: brass, tin plated Cu/Sn, brazed neck.
- PC and PA insulation has easy-entry, PC and PA are halogen-free.

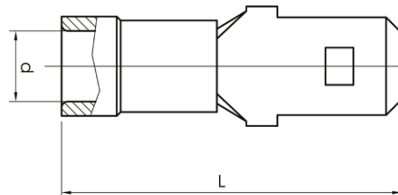


mm <sup>2</sup> (Cu)	AWG Cu	Name	W mm	d	L	s	For tab	Insulation material	Neck type	Easy Entry	Pcs/pack
0,5-1,5	20-16	A1503FLSF5	5,5	3,4	19,5	7	2,8x0,5	PA	Reinforcement sleeve	Yes	100
0,5-1,5	20-16	A1503FLSF8	5	3,4	19,5	7	2,8x0,8	PA	Reinforcement sleeve	Yes	100
0,5-1,5	20-16	A1505FLSF5	7,2	4,1	19,5	7	4,8x0,5	PA	Reinforcement sleeve	Yes	100
0,5-1,5	20-16	A1505FLSF8	7,2	4,1	19,5	7	4,8x0,8	PA	Reinforcement sleeve	Yes	100
0,5-1,5	20-16	A1507FLSF	8,8	4	21,3	7	6,3x0,8	PC	Brazed	Yes	100
1,5-2,5	16-14	A2505FLSF5	7,2	4,5	19,5	8	4,8x0,5	PA	Reinforcement sleeve	Yes	100
1,5-2,5	16-14	A2505FLSF8	7	3,9	19,5	8	4,8x0,8	PA	Reinforcement sleeve	Yes	100
1,5-2,5	16-14	A2507FLSF	8,8	4,5	21,3	8	6,3x0,8	PC	Brazed	Yes	100
4-6	12-10	A4607FLSF	9,2	5,4	26	9	6,3x0,8	PA	Reinforcement sleeve	Yes	100

s = strip length

## Blade 0.5 - 6 mm<sup>2</sup>

- Material: brass, tin plated Cu/Sn, brazed neck.
- PC and PA insulation have easy-entry, PC and PA are halogen-free.



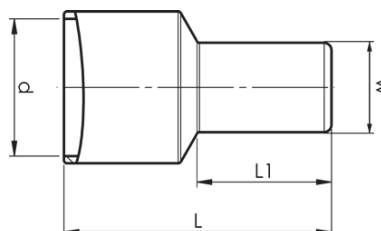
mm <sup>2</sup> (Cu)	AWG Cu	Name	d mm	L	s	Tab	Insulation material	Neck type	Easy Entry	Pcs/pack
0,5-1,5	20-16	A1507H	4,1	22	7	6,3x0,8	PC	Brazed	Yes	100
1,5-2,5	16-14	A2507H	5	22,5	8	6,3x0,8	PC	Brazed	Yes	100
4-6	12-10	A4607H	6,6	24,5	9	6,3x0,8	PA	Reinforcement sleeve	No	100

s = strip length



## End connector sleeves fully insulated 1 - 6 mm<sup>2</sup>

- Material: Cu, tin plated Cu/Sn.
- Insulation of halogen-free PA. Easy-entry.

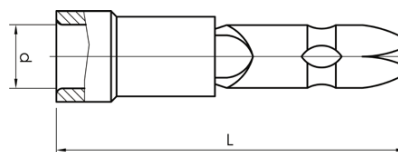


mm <sup>2</sup> (Cu)	AWG Cu	Name	d mm	L	L1	s	Tool	Insulation material	Easy Entry	Pcs/pack
1-3	18-13	A2500E	6,4	15,2	8	8	GSA0760	PA	Yes	100
4-6	12-10	A4600E	9,2	17,7	9	9	GSA0760	PA	Yes	100

s = strip length

## Bullet 0.25 - 6 mm<sup>2</sup>

- Material: brass/Cu, tin plated Cu/Sn.
- PC insulation has easy-entry, PC and PA are halogen-free.

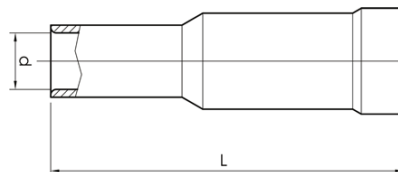


mm <sup>2</sup> (Cu)	AWG Cu	Name	d mm	L	s	Bullet	Tool	Insulation material	Neck type	Easy Entry	Pcs/pack
0,25-0,75	24-20	A0802HA	3,1	26	7	2,0	DSA0115	PA	Reinforcement sleeve	No	100
0,5-1,5	20-16	A1504HA	4	22	7	4,0	GSA0760	PC	Brazed	Yes	100
1,5-2,5	16-14	A2505HA	4,3	20,7	8	5,0	GSA0760	PVC	Reinforcement sleeve	No	100
4-6	12-10	A4605HA	6,6	25,7	9	5,0	GSA0760	PA	Reinforcement sleeve	No	100

s = strip length

## End connector sleeves fully insulated 0.25 - 6 mm<sup>2</sup>

- Material: brass/Cu, tin plated Cu/Sn.
- PC insulation has easy-entry, PC and PA are halogen-free.



mm <sup>2</sup> (Cu)	AWG Cu	Name	d mm	L	s	For bullets	Tool	Insulation material	Neck type	Easy Entry	Material	Pcs/pack
0,25-0,75	24-20	A0802HO	3,1	24,5	7	2	DSA0115	PA	Reinforcement sleeve	No	Brass/Cu, Cu/Sn	100
0,5-1,5	20-16	A1504HO	4	25	7	4	GSA0760	PC	Brazed	Yes	Tin bronze (phosphor bronze), Cu/Sn	100
1,5-2,5	16-14	A2505HO	3,2	25	8	5	GSA0760	PVC	Reinforcement sleeve	No	Brass/Cu, Cu/Sn	100
4-6	12-10	A4605HO	5,7	27	9	5	GSA0760	PA	Reinforcement sleeve	No	Brass/Cu, Cu/Sn	100

s = strip length

## Assortment boxes - pre-insulated terminals



CE RPL605



RPL605 is a complete assortment box for professional work, containing terminals and tools.

### Properties:

- certified crimping tool GSA0760, crimp area 0.5-6 mm<sup>2</sup>
- stripping tool SCT001, cuts and strips 0.5-6 mm<sup>2</sup>
- 605 x Elpress pre-insulated 0.5-6 mm<sup>2</sup> terminals

mm <sup>2</sup>	AWG	Name	Net weight (kg)	Length mm	Width	Height
0,5-6	20-10	RPL605	2,05	261	338	57



CE PL1001



Elpress assortment box designed for electromechanical and service workshops.

### Properties:

- box made of ABS plastic, inserts made of polystyrene
- 29 compartments
- 997 pre-insulated 0.5-6 mm<sup>2</sup> terminals
- 4 connection blocks
- crimping tool GSA0760 Miniforce
- stripping tool SCT001

mm <sup>2</sup>	AWG	Name	Net weight (kg)	Length mm	Width	Height
0,5-6	20-10	PL1001	2,94	380	285	55



CE PL451M



Elpress assortment box for professional use.

### Properties:

- box made of polypropylene, insert made of polystyrene
- 11 compartments
- 346 pre-insulated 0.5-6 mm<sup>2</sup> terminals
- 3 connection blocks
- crimping tool GSA0760 Miniforce
- stripping tool SCT001

mm <sup>2</sup>	AWG	Name	Net weight (kg)	Length mm	Width	Height
0,5-6	20-10	PL451M	1,275	245,5	215	56,5



## PL450

Elpress assortment box designed for hobby use.

### Properties:

- box made of polypropylene, insert made of polystyrene
- 11 compartments
- 346 pre-insulated 0.5-6 mm<sup>2</sup> terminals
- 3 connection blocks
- crimping tool hobby T50, which contact crimps, cuts and strips up to and including 6 mm<sup>2</sup> and cuts M2.5-M5 screws



mm <sup>2</sup>	AWG	Name	Net weight (kg)	Length mm	Width	Height
0,5-6	20-10	PL450	1,019	245,5	215	56,5



## HB150

Elpress assortment box designed for hobby use.

### Properties:

- box made of polypropylene, insert made of polystyrene
- 11 compartments
- 147 pre-insulated 0.5 - 6 mm<sup>2</sup> terminals
- 2 connection blocks
- crimping tool hobby T50, which contact crimps, cuts and strips up to and including 6 mm<sup>2</sup> and cuts M2.5-M5 screws



mm <sup>2</sup>	AWG	Name	Net weight (kg)	Length mm	Width	Height
0,5-6	20-10	HB150	0,781	245,5	215	56,5

# Hobby tools for pre-insulated and uninsulated 0.5 - 6 mm<sup>2</sup> terminals as well as cutting and stripping

## Properties:

- made of high-grade steel with semi-soft handles
- crimping positions are clearly marked
- the tools do not have a locking function
- cuts up to and including 6 mm<sup>2</sup>
- strips up to and including 6 mm<sup>2</sup>
- cuts screws M2.5-M5



## T50 Hobby tool



### Special properties:

- contact crimps pre-insulated 0.5 - 6 mm<sup>2</sup> terminals and tab crimps uninsulated 1.5 - 6 mm<sup>2</sup> terminals
- red handle

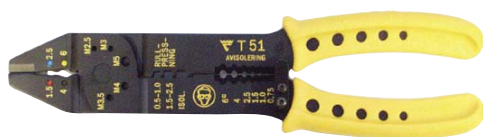
### Crimp geometries



mm <sup>2</sup>	AWG	Name	Crimp geometries	Net weight (kg)	Length mm
0,5-6	20-10	T50	Tab, Oval	0,268	225



## T51 Hobby tool



### Special properties:

- contact crimps pre-insulated 0.5 - 6 mm<sup>2</sup> terminals and roll crimps uninsulated 0.5 - 2.5 mm<sup>2</sup> terminals
- yellow handle

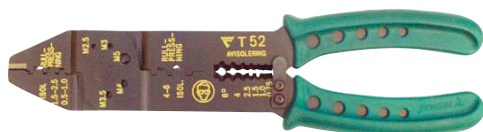
### Crimp geometries



mm <sup>2</sup>	AWG	Name	Crimp geometries	Net weight (kg)	Length mm
0,5-6	20-10	T51	Oval, Roll	0,268	225



## T52 Hobby tool



### Special properties:

- roll crimps uninsulated 0.5 - 6 mm<sup>2</sup> terminals
- green handle

### Crimp geometry



mm <sup>2</sup>	AWG	Name	Crimp geometry	Net weight (kg)	Length mm
0,5-6	20-10	T52	Roll	0,268	225

# Tools for pre-insulated 0.14 - 2.5 mm<sup>2</sup> terminals with measuring certificates



### Properties:

- crimping positions are clearly marked
  - adjustable for changes after long use
  - tested with Elpress terminals
  - locking function that ensures a complete crimp
  - emergency release if the crimping process has to be interrupted
  - unique design that makes the tools thin and versatile
  - minimal muscle strength required for complete crimp
  - suitable for both right and left-handed users
  - withstands at least 50,000 crimps
- supplied with certificate for basic quality monitoring



## DSA0115



Tested and certified mechanical hand tool for symmetrical crimping of pre-insulated terminals 0.14-1.5 mm<sup>2</sup>.

### Special properties:

- easy to check red die nests easily with die nest gauge, ESAQ0760

Crimp geometry



mm <sup>2</sup>	AWG	Name	Crimp geometry	Net weight (kg)	Length mm	Width
0,14-1,5	26-16	DSA0115	Oval	0,445	192	66



## DSA0725



Tested and certified mechanical hand tool for symmetrical crimping of pre-insulated terminals 0.5-2.5 mm<sup>2</sup>.

### Special properties:

- die nests are easily checked with die nest gauge, ESAQ0760

Crimp geometry



mm <sup>2</sup>	AWG	Name	Crimp geometry	Net weight (kg)	Length mm	Width
0,5-2,5	20-14	DSA0725	Oval	0,449	192	66

## ESAQ0760 - die nest gauge

Go/no-go gauge for inspection of die nests in the following tools: DSA0115, DSA0725, GSA0760(C), GSEA0340C.

### Special properties:

- handle part Ø 8 mm
  - easy to check tool die nest
  - The go and no go dimensions are checked in the die nests upon calibration.
- Contact Elpress for more information on calibration and quality management



mm <sup>2</sup>	AWG	Name	Net weight (kg)	Shaft ø	Length mm
0,5-2,5	20-14	ESAQ0760	0,024	8	55

Tool	Die nests
DSA0115	
DSA0725	
GSA0760(C)	
GSEA0340(C)	



# Miniforce tools for pre-insulated 0.5 - 6 mm<sup>2</sup> terminals and 0.25 - 4 mm<sup>2</sup> end casings with measuring certificates



**Properties:**

- locking function which only releases once crimping is complete
- emergency release if the crimping process has to be interrupted
- symmetrical and clearly marked crimping positions
- adjustable for changes after long use
- tested with Elpress terminals
- unique mechanism that reduces maximum handle force from 450 N right down to 250 N (model C)
- ergonomic handle suitable for all users
- maximises the quality of work
- reduces the risk of occupational injuries
- light and versatile design without sacrificing on strength
- model C has extra long handles for the use of two hands
- withstands at least 80,000 crimps
- supplied with certificate for basic quality monitoring



## GSEA0340C



Tested and certified mechanical Miniforce hand tool for crimping pre-insulated terminals 0.5-2.5 mm<sup>2</sup> as well as pre-insulated and uninsulated end sleeves 0.25-4 mm<sup>2</sup>.

mm <sup>2</sup>	AWG	Name	Crimp geometries	Net weight (kg)	Length mm	Width
0,5-2,5 / 0,25-4	20-14 / 22-12	GSEA0340C	Oval, Trapezoid	0,613	256	80

Crimp geometries



## GSW0560C



Tested and certified mechanical Miniforce hand tool for crimping 0.5-6 mm<sup>2</sup> through connectors with heat shrink insulation of the SKW type.

mm <sup>2</sup>	AWG	Name	Crimp geometry	Net weight (kg)	Length mm	Width
0,5-6	20-10	GSW0560C	Oval	0,612	256	80

Crimp geometry





## GSA0760 and GSA0760C

01

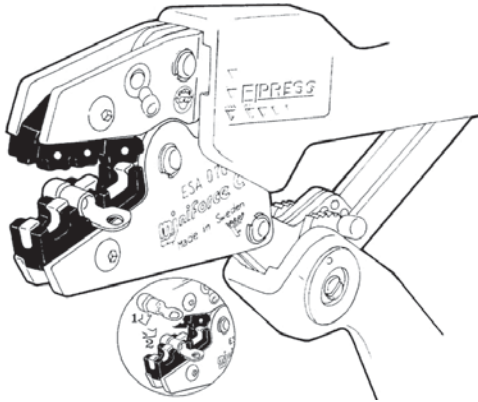
Tested and certified mechanical Miniforce hand tools for symmetrical crimping of pre-insulated terminals 0.5-6 mm<sup>2</sup>.

### Special properties:

- locator that holds the terminal in the right position when crimping and facilitates work in, for example, tight spaces
- die nests are easily checked with die nest gauge, ESAQ0760



mm <sup>2</sup>	AWG	Name	Crimp geometry	Net weight (kg)	Length	Width
0,5-6	20-10	GSA0760	Oval	0,548	203	76
0,5-6	20-10	GSA0760C	Oval	0,607	256	80



Follow procedures (1) and (2) when attaching the terminal in the locator on tool GSA0760(C).

Crimp geometry



# Battery-powered crimping tools for pre-insulated 0.5 - 6 mm<sup>2</sup> terminals, uninsulated 0.25 - 10 mm<sup>2</sup> terminals and 0.5 - 50 mm<sup>2</sup> end sleeves

**Properties:**

- Li-ion battery powered (10.8 V and 2 Ah), charging time about 40 min
- very good accessibility and ergonomics
- service and installation tools
- fast crimping process 2 – 4 sec
- approximately 230 crimps/battery charge
- dies for the tool sold separately



## PVL130P - Elpress Mini

Elpress mini tool with a sleek design with a high performance Li-Ion battery that facilitates your work with its improved battery capacity. Crimping force max. 13 kN. 1 x Li-ion battery and charger included.

**Properties:**

- one-handed operation for easy control of all tool functions
- durable crimping head for long service life
- optimal crimping thanks to parallel-moving dies
- easy to use due to its low weight
- high-performance 12 V Li-Ion battery – with indication of charge status
- open head, rotating
- easy and comfortable to use one handed thanks to its ergonomic 2-component housing with grip-friendly protection
- automatic return of dies when crimping is complete



PVL130P - Elpress MINI, dies sold separately.

mm <sup>2</sup> (Cu)	AWG (Cu)	Name	Net weight (kg)	Length mm	Width	Height	Note
0,25-50	24-1/0	PVL130P	1,5	330	85	60	Charger: 230VAC
0,25-50	24-1/0	PVL130P-US	1,5	330	85	60	Charger: 115VAC
0,25-50	24-1/0	PVL130P-WOBC 0,91		330	85	60	without Battery/Charger



PVL130P, case and charger.





## PVL130S - Elpress Mini



PVL130S - Elpress MINI, supplied with die pair SA0760.

Elpress mini tools with intuitive PowerSense function combine the benefits of manual crimping tools with the benefits of battery-powered hydraulic crimping tools.

Crimping force max. 15 kN. 1 x Li-ion battery and charger included.

### Properties:

- one-handed operation for easy control of all tool functions
- electronic control with locking function and monitoring for complete closure of the jaws
- safety loop used as fall protection when used outdoors
- motor protection ensures safety in case of overload
- easy and comfortable to use one handed thanks to its ergonomic 2-component housing with grip-friendly protection
- very low weight and fast crimping process for maximum efficiency
- powerful driving technology allows for easy crimps
- high-performance 12 V Li-ion battery – with indication of charge status
- LED work lighting
- Die pair SA0760 comes with the tool

mm <sup>2</sup> (Cu)	AWG (Cu)	Name	Net weight (kg)	Length mm	Width	Height	Note
0,25-50	24-1/0	PVL130S	1,5	58	92	250	Charger: 230VAC
0,25-50	24-1/0	PVL130S-US	0,96	58	92	250	Charger: 115VAC
0,25-50	24-1/0	PVL130S-WOBC	0,91	58	92	250	without Battery/Charger



## Dies for PVL130P/PVL130S



EB0560



WB4099



KB0325



EB3550



EB1025



EB4010



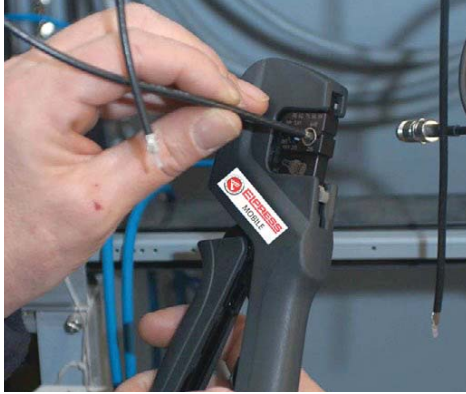
RB0560



SA0760

mm <sup>2</sup> (Cu)	AWG (Cu)	Name	Crimp geometry	Net weight (kg)	Application
0,5-6	20-10	SA0760	Oval	0,05	Pre-insulated terminals
0,25-2,5	22-14	KB0325	Tab	0,039	Uninsulated terminals
4-10	12-8	WB4099	W	0,05	Uninsulated terminals
0,5-6	20-10	RB0560	Roll	0,05	Uninsulated terminals
0,5-6	20-10	EB0560	Trapezoid	0,057	End sleeves
4-10	12-8	EB4010	Trapezoid	0,05	End sleeves
10-25	6-4	EB1025	Trapezoid	0,05	End sleeves
35-50	2-0	EB3550	Trapezoid	0,05	End sleeves

## Elpress Mobile - tool with interchangeable dies



Professional contact crimping tool with interchangeable dies for the installer or service technician.

### Properties:

- reliable, safe, economic and ergonomic tools
- parallel-moving crimping movement with 10 kN crimping force, tested for 20,000 crimps
- change crimping dies quickly and easily in one operation
- the crimping dies are kept together in pairs and stored in custom holders
- wide selection of dies allows you to use one tool frame for 19 different crimping applications!



Elpress Mobile, frame only.

### Elpress Mobile

Mobile hand tool (frame only). Dies are supplementary.

mm <sup>2</sup>	AWG	Name	Net weight (kg)	Length mm	Width
0,25-10	24-8	MOBILE	0,554	234	64



Elpress Mobile + dies OAA0525 and OEB0210.

### Mobile Installation

Mobile hand tool with two interchangeable dies:

- Die OAA0525 for crimping pre-insulated 0.5 - 2.5 mm<sup>2</sup> terminals.
- Die OEB0210 for crimping end sleeves 0.25 - 10 mm<sup>2</sup>.
- The tool comes with associated dies in blister packaging.

Name	Net weight (kg)	Length mm	Width
MOBILE INSTALLATION	0,695	234	64



Elpress Mobile + dies OMP45 and OCC1113.

### Mobile DataCom

Mobile hand tool with two interchangeable dies:

- OMP45 for crimping modular plug RJ45.
- OCC1113 for crimping coaxial contacts RG58, RG59, RG62 and RG71.
- The tool comes with associated dies in blister packaging.

Name	Net weight (kg)	Length mm	Width
MOBILE DATA/COM	0,667	234	64





## Mobile Solar Kit



Mobile hand tool with three interchangeable dies and cable stripper LOKE for stripping solar panel cable with extra thick insulation:

- OMS4, roll crimping of contacts with sleeve Ø 4 mm, 2.5 - 6.0 mm².
- OMS3, square crimping of contacts with sleeve Ø 3 mm, 2.5 - 6.0 mm².
- OMSL, square crimping of contacts, 2.5 - 6.0 mm².

Name	Net weight (kg)	Length mm	Width
MOBILE SOLAR	0,772	234	64

Elpress Mobile + dies OMS4, OMS3 and OMSL.



Cable stripper LOKE.



## Mobile Box

Box for the mobile tool with room for the tool as well as 5-6 associated dies. Tools and dies are ordered separately.



Name	Net weight (kg)	Length mm	Width	Height
MOBILE BOX	0,32	246	218	57

## Additional dies for Elpress Mobile

All dies have the same quick and easy way of being inserted into the tool frame. The dies are kept together in pairs and supplied in a cassette that can be docked to other cassettes.



### OAA0160

Crimping die for Elpress MOBILE tool for asymmetric crimping of pre-insulated terminals 0.1-4 mm<sup>2</sup> and 4-6 mm<sup>2</sup>.  
AWG 11-9



### OAA0525

Crimping die for Elpress MOBILE tool for asymmetric crimping of pre-insulated terminals 0.5-2.5 mm<sup>2</sup>.  
AWG 20-13.



### OSW0360

Crimping die for Elpress MOBILE tool for crimping through connectors with heat shrink insulation 0.3-0.75 mm<sup>2</sup> and 4-6 mm<sup>2</sup>.  
AWG 11-9.



### OSW0525

Crimping die for Elpress MOBILE tool for crimping through connectors with heat shrink insulation 0.5-1.5 mm<sup>2</sup> and 1.5-2.5 mm<sup>2</sup>.  
AWG 15-13.



### OPB0140

Crimping die for Elpress MOBILE tool for crimping global power connectors, GPC connectors.



### OPB6099

Crimping die for Elpress MOBILE tool for crimping global power connectors, GPC connectors.



### OWB4099

Crimping die for Elpress MOBILE tool for W crimping of uninsulated terminals 4-10 mm<sup>2</sup>.  
AWG 11-7.



### OKB0725

Crimping die for Elpress MOBILE tool for punch crimping uninsulated terminals 0.75-2.5 mm<sup>2</sup>.  
AWG 18-13.



### OKB0560

Crimping die for Elpress MOBILE tool for punch crimping uninsulated terminals 0.5-6 mm<sup>2</sup>.  
AWG 20-9.



### OEB0210

Crimping die for Elpress MOBILE tool for crimping end sleeves 0.25-10 mm<sup>2</sup>.  
AWG 24-7.



### OEB1625

Crimping die for Elpress MOBILE tool for crimping end sleeves 16-25 mm<sup>2</sup>.  
AWG 5-3.



### OEB3550

Crimping die for Elpress MOBILE tool for crimping end sleeves 35-50 mm<sup>2</sup>.  
AWG 2-1/0.



### ORB0110

Crimping die for Elpress MOBILE tool for roll crimping uninsulated terminals 0.1-1 mm<sup>2</sup>.  
AWG 26-17.



### ORB0560

Crimping die for Elpress MOBILE tool for roll crimping uninsulated terminals 0.5-6 mm<sup>2</sup>.  
AWG 20-9.



### OMP45

Crimping die for Elpress MOBILE tool for crimping modular plug RJ45.



### OMP11

Crimping die for Elpress MOBILE tool for crimping modular plug RJ11.



### OFO5432

Crimping die for Elpress MOBILE tool for crimping fibre optic contacts.



### OCC0908

Crimping die for Elpress MOBILE tool for crimping coaxial contacts RG174, 179.



### OCC1113

Crimping die for Elpress MOBILE tool for crimping coaxial contacts RG58, 59, 62, 71.



### OCC4755

Crimping die for Elpress MOBILE tool for crimping coaxial contacts RG6, 59.



### OMS4

Dies for Mobile tools for roll crimping contacts with sleeve diameter 4 mm, 2.5-6.0 mm<sup>2</sup>.  
AWG 13-19.



### OMSL

Dies for square crimping contacts 2.5-6.0 mm<sup>2</sup>.  
AWG 13-9.

