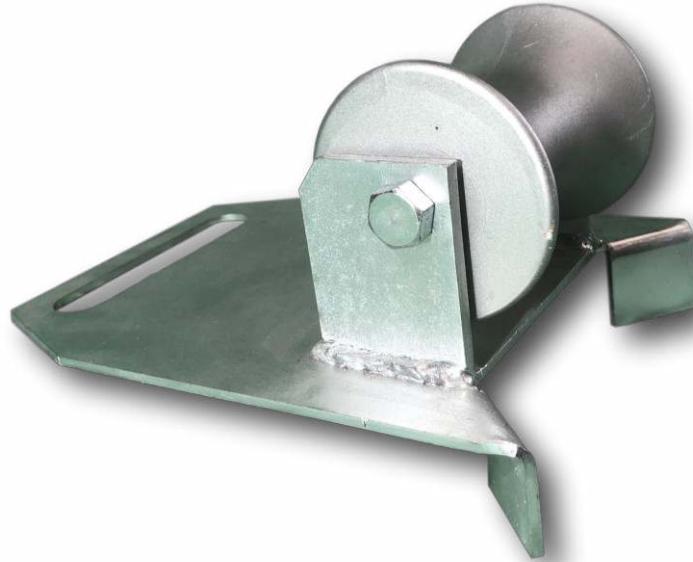


# MR2 Edge/Corner Mount Manhole Lead In Roller



The MR2 manhole cable roller leads the cable from the drum into the jointbox/manhole or the winch bond out of the manhole. The roller has 2 angled hooks for location on the manhole edge or on a 90 degree corner

- Heavy steel section construction
- 90mm diameter aluminium roller\*
- Oil impregnated maintenance free bushes fitted
- Zinc plated finish
- Size: 27cm long x 19cm wide
- Weight: 3Kg

\* The aluminium roller can be substituted with a solid steel roller (MR2S) when using wire winch bond thus preventing damage

TWS are proactive in product development and enhancement and as such the specifications are subject to alteration without prior notice