

Safe and secure connections
for solar park installations.

ELPRESS

Elpress products

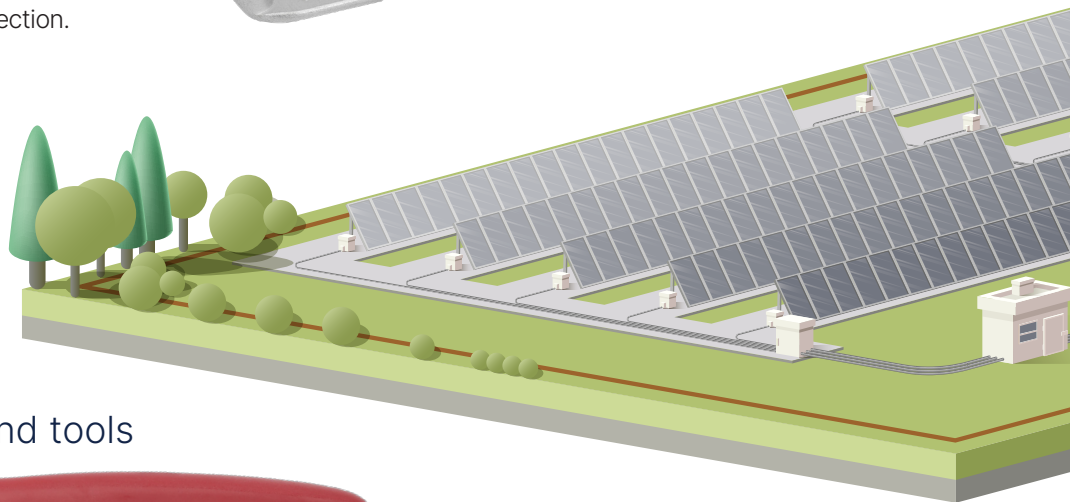
Safe and secure connections for solar installations.

We are focusing on nature's own energy resources with, for example, solar power and supports the technology for a better and cleaner environment.

We contribute to the industry and the OEM's with more than 60 years of knowledge of complete crimping systems. Our long experience in the market thus makes us a safe choice.

We design, develop, invent prototypes, test and validate new products according to the highest requirements and tests on the market. Together with a high level of service and product knowledge we make sure that you get a safe and secure connection.

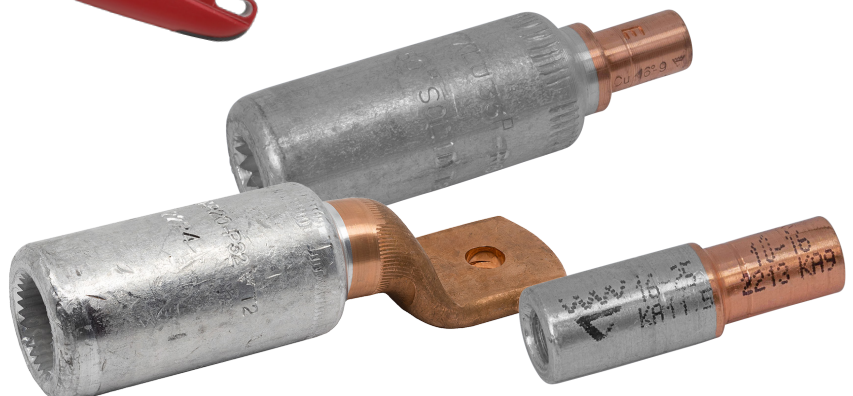
CU terminals



Hand tools



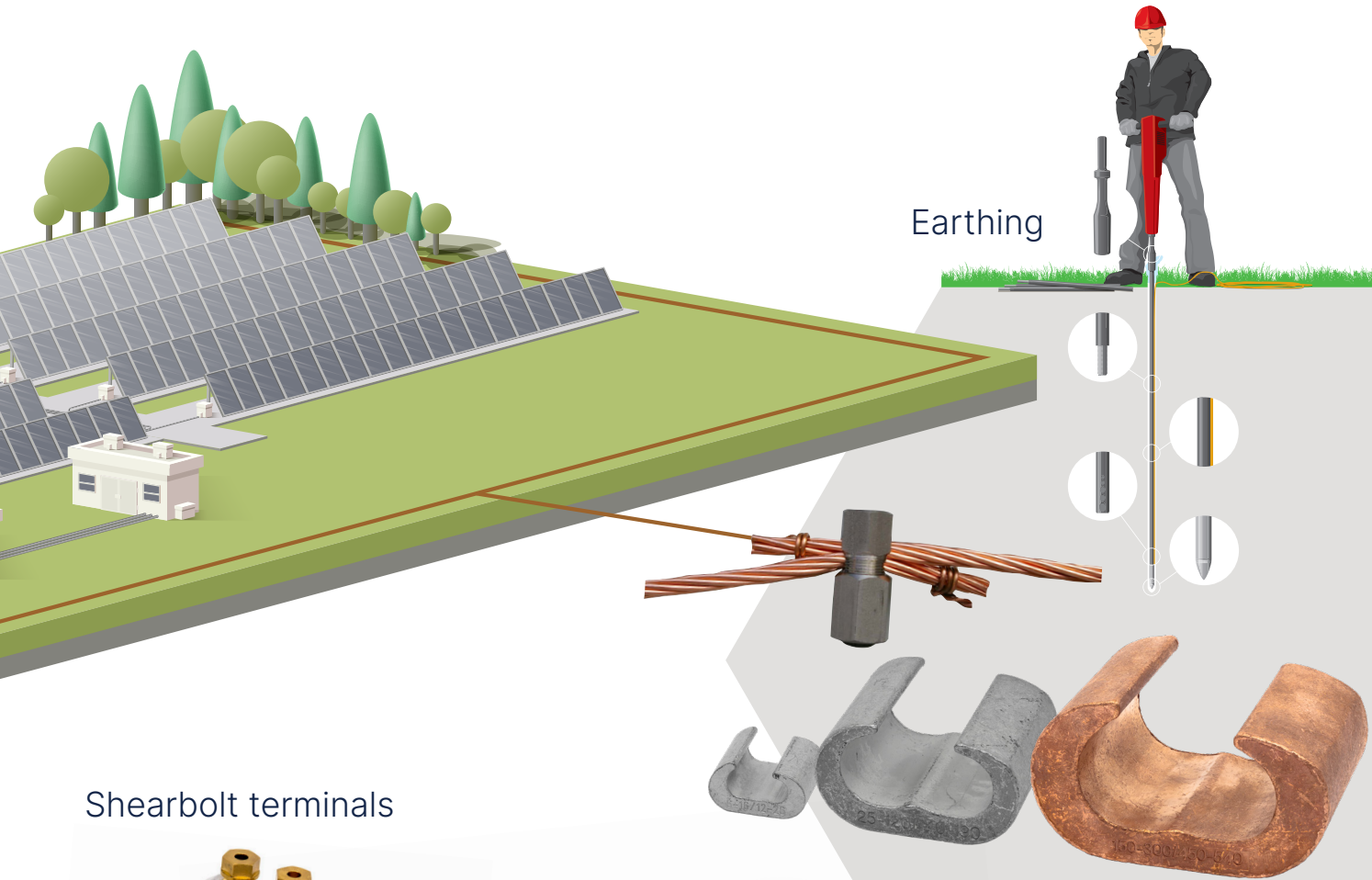
AL/CU terminals



Quality tools



Earthing



Shearbolt terminals



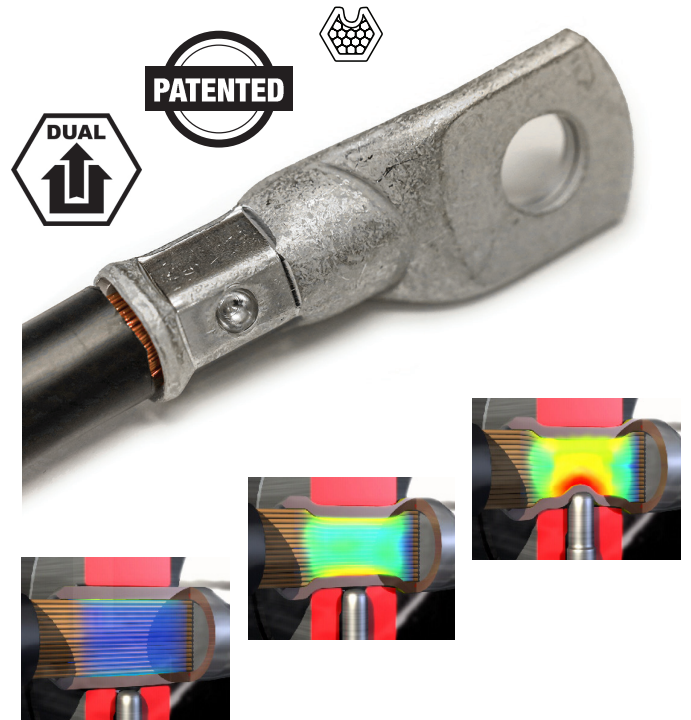
Crimping with Elpress' patented DUAL System.

For crimping of flexible copper conductors in KRF/KSF connections.

The technology has been developed to meet the needs of manufactures with high standards on applications in demanding environment where the connection, besides improved electrical reliability and durability, are also subjected to e.g. corrosions, vibrations and mechanical stress.

Contact crimping with DUAL takes place in a two-step movement: First a hexagonal crimping that provides optimal symmetrical contact with the conductor's outer wires, which means that no wires are broken or come apart in the edge facing the connector. This is followed by a indent crimp which compresses the inner wires and provides 30% better electrical stability compared to traditional hexagonal crimping

*SEN245010 provides higher tensile strength limits relatively to IEC 61238
** IEC61373 replaces EN50155 (mainly copper connections has been tested)



Our story.

We have been developing, manufacturing and marketing complete crimping systems for electrical connectors since 1959.

The Elpress Group consists of the Elpress and ABIKO business areas and is owned by Lagercrantz Group AB. Elpress head office, factory and warehouse are located in Kramfors, Sweden.

Subsidiaries Elpress GmbH, Elpress A/S, Elpress AS, Elpress (Beijing) Ltd. and Elpress Inc. with local warehouses in Silkeborg/Denmark, Beijing/China and Chicago/USA.



Elpress AB · P.O. Box 186, SE-872 24 KRAMFORS, Sweden
Tel: +46 612-71 71 00
E-mail: sales@elpress.se | www.elpress.net

Elpress A/S · Randersvej 16, DK-8600 Silkeborg, Danmark
Tel: +45 86 81 61 11
E-mail: salg@elpress.dk | www.elpress.dk

Elpress AS · Bruket 31, Pb 79, N-1621 Gressvik, Norge
Tlf.: +47 91 68 55 02
E-post: sales@elpress.no | www.elpress.no

Elpress INC · 1 E 22nd Street, Suite 200, Lombard IL. 60148 USA
Tel: +1-331-814 2910
E-mail: sales@elpress.us | www.elpress.us

Elpress GmbH · Kränkelsweg 24, DE-41748 VIERSEN, Deutschland
Tel: +49 2162 93 19-0
E-mail: sales@elpress.de | www.elpress.de

Elpress (北京) 电器元件有限公司
迪阳大厦1605室 东三环北路H2号 朝阳区 中国 北京市 邮编 100027
+86 10 597 961 87
info@elpress.com.cn | www.elpress.com.cn

ELPRESS