

Power. Connected.

Power Cable Accessories & Electrical Components:
Experts | Stockists | Distributors

E-Tech Components UK Ltd are a specialist distributor of High-Quality Power Cable Accessories & Electrical Components from leading industry brands in the UK and Worldwide. Our products and solutions can save time, reduce costs, improve quality and ensure compliance to industry standards and regulations.



Connecting Power since 2004



We specialise in:

1.0

LV, MV & HV Cable Joints,
Terminations & Separable
Connectors

2.0

Complete Crimping Systems
(Crimp Lugs, Hand & Battery-Operated Tools)

3.0

Cable Management
& Protection Solutions
(Cleats, Ties, Ducts, Trays, Fixings,
Fastening & Trailing Cable Solutions)

4.0

Other Power Cable Accessories
& Components

Other offerings

- Full Technical Support
- Design, Demonstrations & Certified Training on our Products & Disciplines
- Technical Submittals (Designs, Drawing, Specifications & Other Reports)
- On-Site Crimping Inspection & Assessment
- In-house Tool Repair & Calibration



Contents

- 04 Industries & Brands
- 06 Screened Separable Connectors
- 07 Heat Shrink & Cold Shrink Solutions
- 08 Other LV-HV Joints, Glands & Accessories
- 09 LV, MV & HV Cable Prep & Jointing Tools
- 10 Complete Crimping Systems
- 11 Cable Management & Protection Solutions
- 12 Earthing, Lightning & Surge Protection Solutions
- 14 Railway & Traction | Power Distribution
- 17 Power Cable Accessories & Components
- 18 Technical Support & Training Centre
- 19 Crimp & Power Tool Service Centre

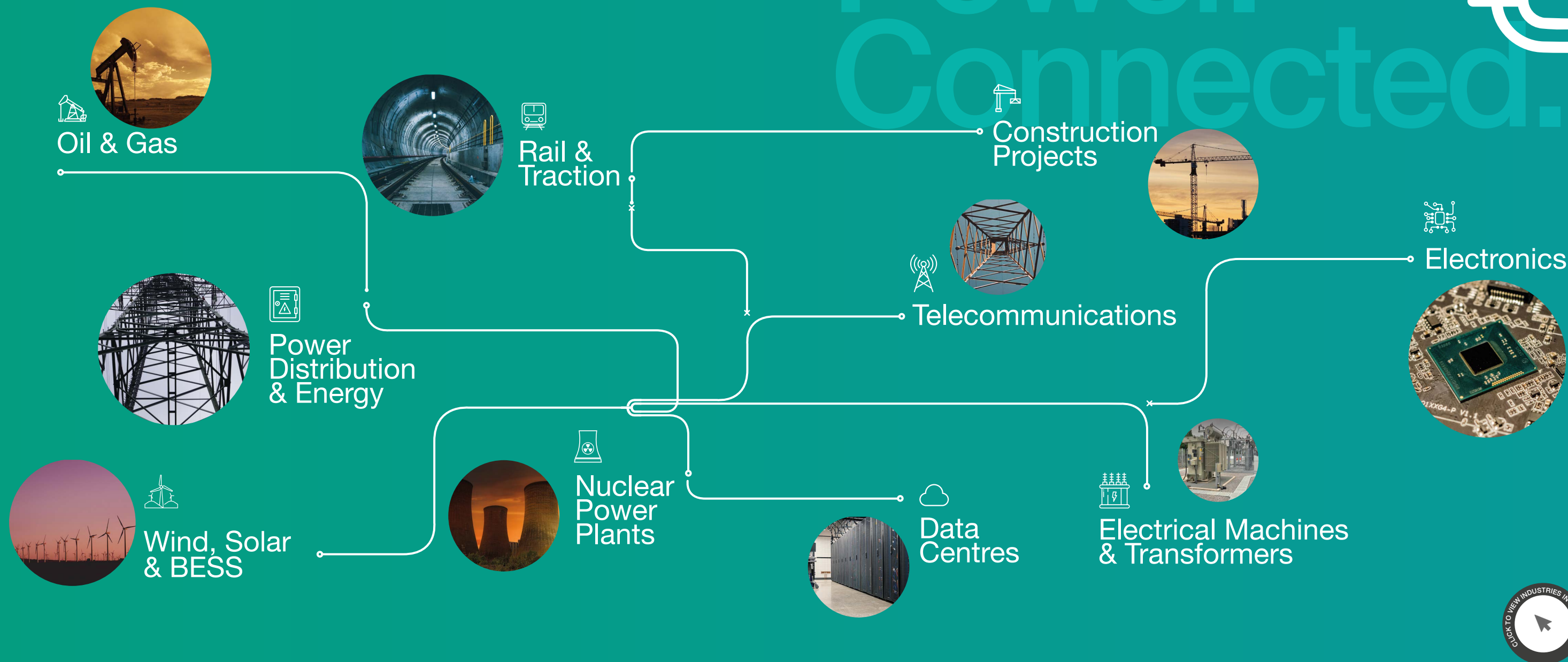
INTERACTIVE DOCUMENT

Click on the page number to take you to the relevant page. Click [Contents](#) to return here.

Our Industries

Contents

Power. Connected.



Our Brands

We Stock, Supply & Specify the leading brands across the industry.



Screened Separable Connectors

1.0

Heat Shrink & Cold Shrink Solutions



Discover our range of MV & HV **Separable Connectors**, also known as Cable Plugs, Tee's, or Elbows, designed for quick and easy installation. These connectors offer high reliability and exceptional performance for indoor and outdoor applications, ensuring seamless connectivity across various setups.

Please contact a member of our Technical Sales Team for expert advice or additional details on your application's requirements.



Interface A
Up to 24 kV | 250 A



Interface B
Up to 36 kV | 400 A



Interface C Symmetrical
Up to 42kV | 630-1250 A



Interface C Compact
Up to 42 kV | 630-1250 A



Interface D
Up to 24kV | 1250 A



Interface E
Up to 42 kV | 800 A



Interface F
Up to 42 kV | 2500 A



Accessories



Pfisterer CONNEX offers an extensive range of modular connecting and jointing components with plug-in technology, along with a variety of practical assembly tools. This range ensures ultimate safety and maximum power for resilient power grid operation. CONNEX is suitable for indoor and outdoor applications, above or below ground, on land or at sea, in busy cities or remote caverns.



Transformer Sockets



Cable Connections



Connex Accessories



Assembly Tools

Brands we stock in this category



Heat Shrink Cable Joints, Terminations, Tubes & Other Components in a wide range of sizes, shapes and materials, each with specific properties suitable for different applications. They form tight and strong seals and feature increased chemical resistance and mechanical strength. (Installation: Expose the heat shrink cable component to thermal energy with a blow torch or heat gun. When reaching the necessary threshold, a reduction in volume takes place, creating a tight seal around the cable).



Heat Shrink Cable Joints & Kits



Heat Shrink Cable Terminations & Kits



Heat Shrink Termination Accessories

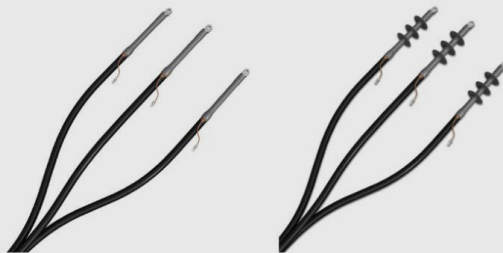


Heat Shrink Tubes & Sleeves

Cold Shrink Cable Joints, Terminations, Tubes & Other Components, engineered for tight spaces, quick and easy installation, increased safety, environmental friendliness and cost effectiveness. (Installation: Place a pre-expanded tube over a connector or joint and release the support liners. Then, the joint contracts and conforms tightly to the cable without the need for external heat).



Cold Shrink Cable Joints & Kits

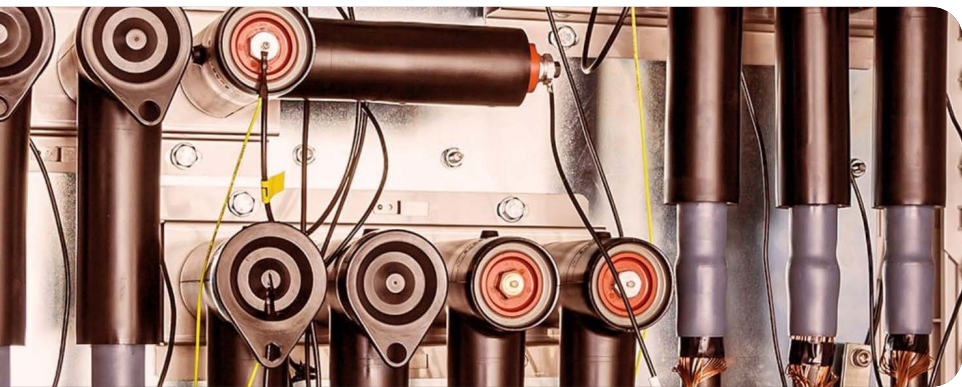


Cold Shrink Cable Terminations & Kits

Brands we stock in this category



Other LV-HV Jointing Solutions & Accessories



Our comprehensive range includes other LV- HV Jointing Solutions for Industrial, Universal, Afumex LSOH, Fire Performance, Waterproof, Resin, Underground, Hydrocarbon Resistant, Heat Shrink and Elased Jointing, suitable for numerous sectors.

1.0



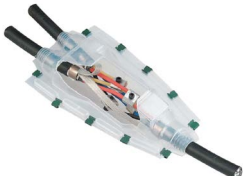
LV Resin Joints



Fire Resistant & LSOH Joints

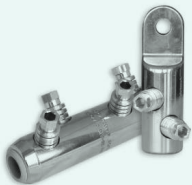


Straight Joints



Branch Joints

LV, MV & HV Jointing Support Accessories are essential components for installing, connecting, terminating, jointing and maintaining low, medium, and high voltage cables. They are crucial for ensuring secure connections, reliable jointing, proper cable alignment and overall cable network reliability.



Mechanical Lugs & Connectors



LV Piercing Connectors



Cable Heating / Straightening



Cable Jointing Stands



Tapes & More

Brands we stock in this category



LV, MV & HV Cable Prep & Jointing Tools

Contents

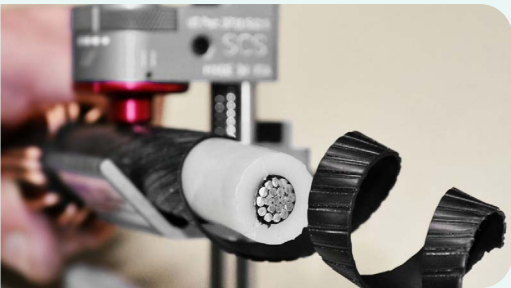
1.0



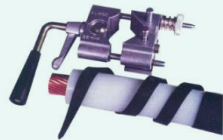
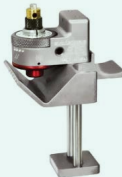
Explore our selection of LV, MV & HV Cable Jointing Tools tailored to meet the needs of electrical cable jointers working with a variety of cables and conductors. Suitable for 11kV to 400kV polymeric cables with XLPE or EPR insulation, our tools cover all aspects of cable preparation, cutting, stripping and more. Choose from a wide range of leading brands for your jointing tool requirements, whether you're dealing with Core Insulation, Semi-Con or Outer Sheath.



Core Insulation Tools



Semi-Con Tools



Outer Sheath Tools



Other Cable Prep Tools



Brands we stock in this category



LV, MV & HV Solutions

Crimping Tool Systems


2.0




Our **Crimping Tools** range from simple hand-operated models to advanced electrically-and battery-powered hydraulic models. Crimp Stations & Software for industrial crimping needs, analysis of crimps and system calibration are also available.

We support our customers by offering Technical Support, Crimping Courses, Tool Demonstrations and On-Site Crimping Inspection & Assessment. Finally, our Tool Service Department can support you with Crimp Tool & Power Source Repair, Check, Calibration, Maintenance & Certification.







Hand Crimpers




Mini Battery Crimp Tools




Battery Operated Crimp Tools




Battery Operated Pistols




Crimping Heads



Crimping Station



Foot Pumps



Battery Operated Pumps

Brands we stock in this category



Crimping Dies, Punches, Boxes & Lugs & Terminals

Contents
2.0



Crimping Dies, Punches and Matrices: Designed for crimping Cu Terminals, Al Terminals, and C-sleeves using different tool types. These components play a crucial role in ensuring secure and reliable connections in electrical applications.
Assortment and Storage Tool Boxes and Kits: Designed for professionals and hobbyists to store, carry and assort tools for crimping, preparing, cutting and stripping along with all the necessary accessories.





Crimping Dies




Punches & Matrices




Assortment & Storage Boxes & Kits



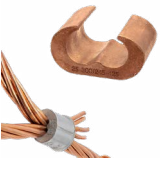
High Quality Cable Lugs, Terminals & Connectors made from pure aluminium (Al) 99.7%, electrolytic copper (Cu) 99.9%, pre-insulated, un-insulated, end terminals, c-sleeves and other types in a vast variety of sizes and colours.




Copper (Cu)




Aluminium (Al) & Bimetallic (Alcu)




C-Sleeves




Screw - Shearbolt




End Terminals - Ferrules



Pre-Insulated



Un-Insulated



Stainless Steel (SS316L)

Brands we stock in this category



Cable Ducts, Trays, Troughs, Covers & Duct Sealants

3.0

Explore our diverse range of **Cable Ducts, Trays, Conduits, Covers, Rolls, Troughs & Duct Sealants** designed for efficient Cable Management, Routing & Protection. From underground multi-rack cable installations to wall and roof bendable cable trays and from specialised conduits to heavy duty highly visible damage prevention solutions, our products cater to a wide range of cable management and protection needs.



Ducting Systems



Cable Containment



Troughing Systems



Conduits & Fittings



Covers, Rolls & Tapes



Duct Sealing Systems

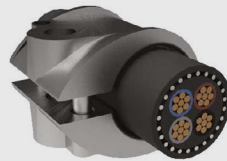
Brands we stock in this category



Cable Cleats & Clamps

3.0

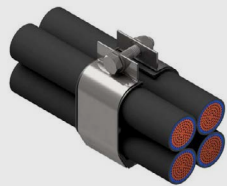
Cable Cleats & Clamps ensure the retention, securing and supporting of cables. They restrict cable movement and provide resistance to electro-mechanical forces. They can be mounted on supports in many ways, but they must be correctly installed at intervals to satisfy certain requirements. Choose the material, the design and finish of the cleat to match your application.



Single Way



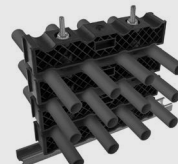
Trefoil - Triple



Quad - Multiple



Fire Resistant



Blocks - Transits



Fixing Kits & Accessories

Brands we stock in this category



Cable Management Solutions

3.0

Elevate your Cable Management with our comprehensive range of Fire Rated Fixings, Trailing Cable Solutions, and Cable Ties tailored for electrical installation, datacom, telecom, fire protection, seismic, HVAC and many more applications.



Fire Rated Fixings



Trailing Cable Solutions



Cable Ties & Banding Systems



Cable Labels, Markers & ID



Cable Laying Equipment



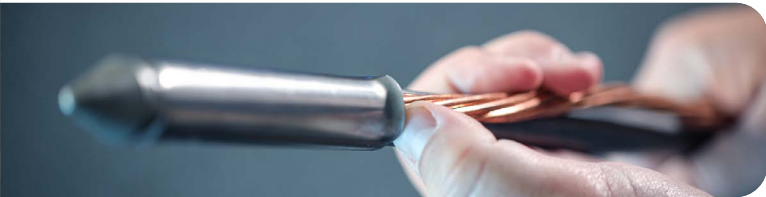
Pulling Grips & Accessories

Brands we stock in this category



Earthing Protection

Contents
4.0



In an electrical installation, an Earthing or Grounding Protection System connects specific parts of that installation with the Earth's conductive surface for safety and functional purposes. We stock and offer a variety of different Earthing Protection Solutions and Complete Systems. Please contact a member of our Technical Sales Team to discuss your specific installation requirements.



Deep Earthing System



Earth Bars



Earth Rods



Rod Couplers



Power Hammer



Clamps



Earth Braids



Conductors

Lightning & Surge Protection Solutions



Lightning Protection Systems & Solutions minimise the risk of damage to both the external and internal parts of a structure from lightning strikes or voltage spikes. They also reduce the risk of injuries by safely discharging the high voltage into the earth system.



Air Rods



B Bonds



Bimetallic Connectors



Surge Protection Devices

Brands we stock in these categories



Cable Management & Protection Solutions



Railway & Traction

4.0

Our wide portfolio includes innovative installation solutions for power cable circuits. These solutions are designed to provide lighting and small power applications in harsh environments, such as rail tunnels and bridges.



Connecta Lighting & Power System



Flexo Rail



Modular Power System



Rail Accessories

Brands we stock in this category



Power Distribution

Electric Power Distribution is the final stage in the delivery of electric power. It carries electricity from the transmission system to individual consumers. Distribution substations connect to the transmission system and lower the transmission voltage with the use of transformers.



Wall Mounted Distributors



Mobile Distributors



Transformers



Cable Reels & Drums



Plugs & Sockets



Welding Articles

Brands we stock in this category



Power Cable Accessories & Components

Contents

4.0



A comprehensive range of Power Cable Accessories & Components that save time, reduce costs, improve quality and ensure compliance to industry standards and regulations.

Among others, this category includes:

Cable Glands & Kits

For Industrial, Hazardous, Fire Performance & LS0H Applications.



Industrial Glands & Kits



Hazardous Glands & Kits



Fire Performance & LS0H Glands & Kits

Compounds & Resins

Designed to prevent galvanic corrosion, enhance connections in electrical joints and prevent contaminants from influencing the connection

Junction Boxes & Joint Closures

Tailored to provide watertight and pressure-tight protection for optical fibres and optical fibre splices for all cable designs, in the most demanding environments.



Compounds



Resins



Junction Boxes



Joint Closures

Brands we stock in this category



Other Power Cable Accessories & Components

Technical Support & Training Centre



Apprentice Courses



Expert Seminars



Certified Training



Technical Submittals



Tool Demonstrations

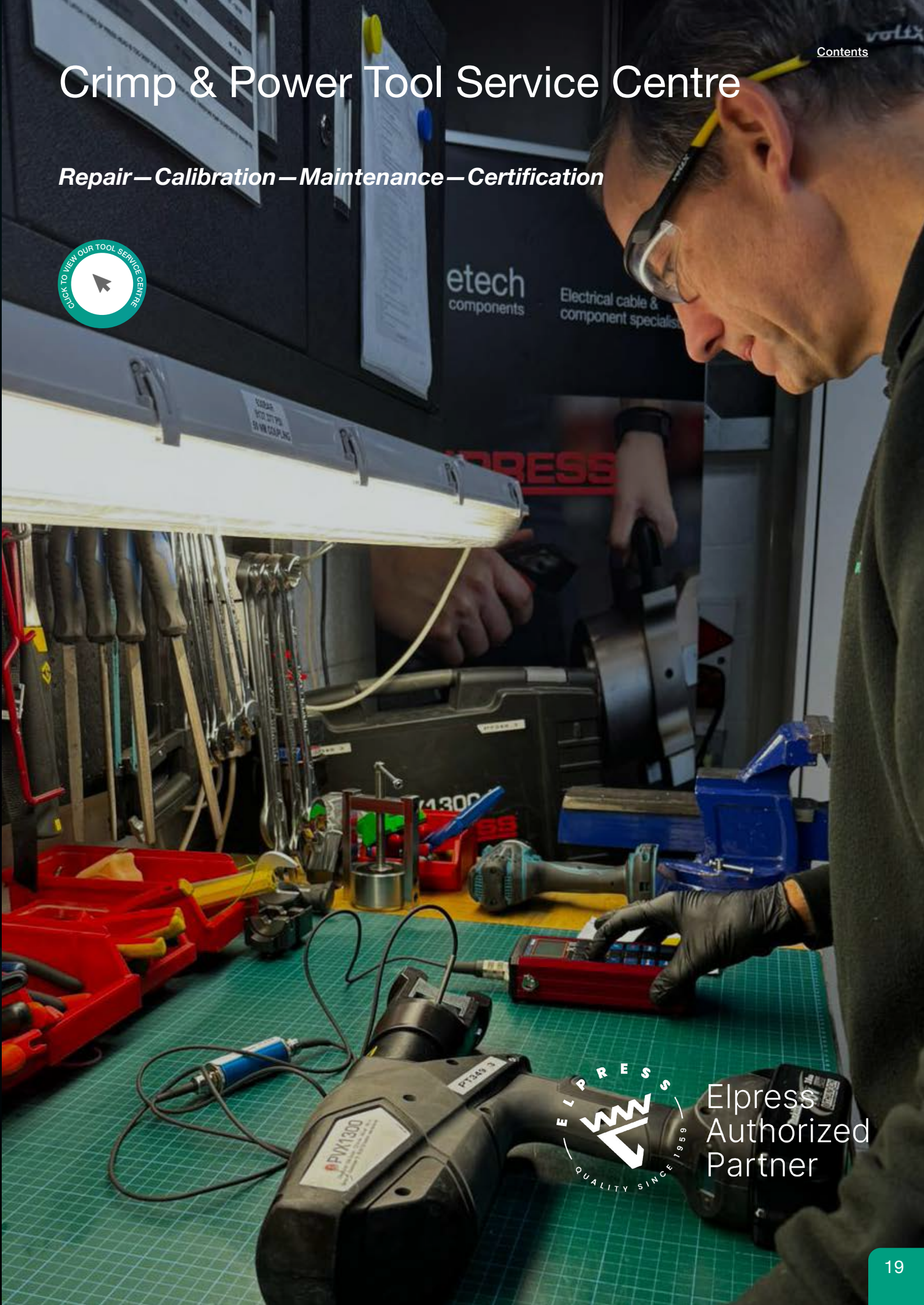


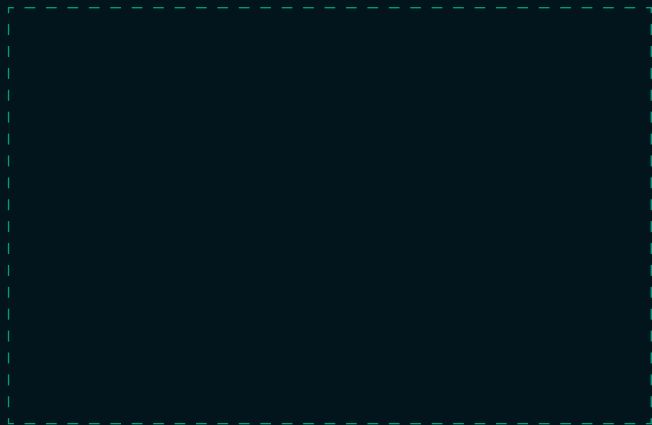
On-Site Crimping Inspection & Assessment



Crimp & Power Tool Service Centre

Repair — Calibration — Maintenance — Certification





etechcomponents.com