

UNIVERSAL DUCT SEALING SYSTEMS



100mm Openings
Fits (99-103mm)



125mm Openings
Fits (124-128mm)

KRASO[®]
EINFACH + DICHT



150mm Openings
Fits (149-153mm)

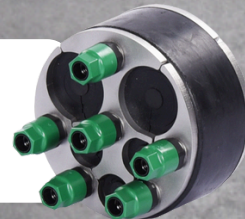


200mm Openings
Fits (198-203mm)

Design 1
4 x (6 to 33mm)



Design 2
3 x (6 to 18mm), &
2 x (6 to 33mm)



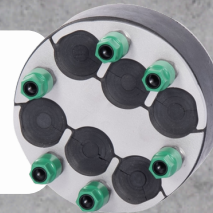
Design 3
8 x (6 to 18mm)



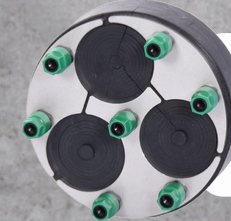
Design 4
1 x (18 to 65mm)
Single Cable/Pipe



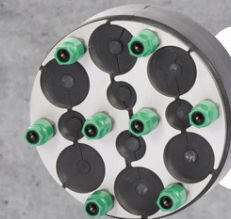
Design 1
6 x (6 to 28mm)



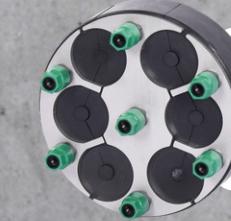
Design 1
3 x (6 to 52mm)
TREFOIL



Design 2
4 x (6 to 18mm), &
6 x (6 to 33mm)



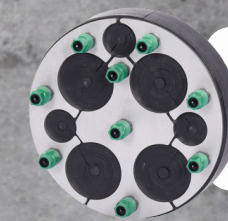
Design 3
6 x (6 to 38mm)



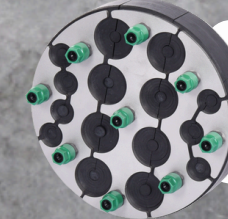
Design 4
1 x (12 to 75mm)



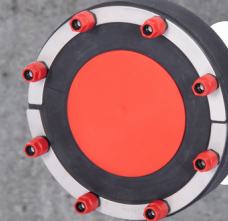
Design 1
3 x (6 to 28mm), &
4 x (6 to 52mm)



Design 2
7 x (6 to 18mm), &
8 x (6 to 33mm)



Design 3
1 x (110 to 160mm)
single cable/pipe



**CUSTOMISED
VERSIONS
AVAILABLE** !

Torque Rated Nut
Technology (No
Torque Wrench
Required)

2.5 Bar Pressure
Resistant

Perfect For
Running Water
Applications

Chlorine Resistant

40mm Thick
Specialised
Rubber

Methane Resistant

Stainless Steel
Non-Corrosive
Plates

Radon Resistant

Hydrogen
Sulphide
Resistant

Split Design
For Retrofit
Installations

Peelable Cable
Entries For
Different Sized
Cables