

Power. Connected.

Power Cable Accessories & Electrical Components:
Experts | Stockists | Distributors

etechcomponents.com

E-Tech Components UK Ltd are a specialist distributor of High-Quality Power Cable Accessories & Electrical Components from leading industry brands in the UK and Worldwide. Our products and solutions can save time, reduce costs, improve quality and ensure compliance to industry standards and regulations.



Connecting Power since 2004

A Nasdaq Stockholm-listed group offering world-leading, value-creating technology, using either proprietary products or products from leading suppliers.



We specialise in:

1.0

LV, MV & HV Cable Joints, Terminations & Separable Connectors

2.0

Complete Crimping Systems
(Crimp Lugs, Hand & Battery-Operated Tools)

3.0

Cable Management & Protection Solutions
(Cleats, Ties, Ducts, Trays, Fixings, Fastening & Trailing Cable Solutions)

4.0

Other Power Cable Accessories & Components

Other offerings

- Full Technical Support
- Design, Demonstrations & Certified Training on our Products & Disciplines
- Technical Submittals
(Designs, Drawing, Specifications & Other Reports)
- On-Site Crimping Inspection & Assessment
- In-house Tool Repair & Calibration
- Tool Hire



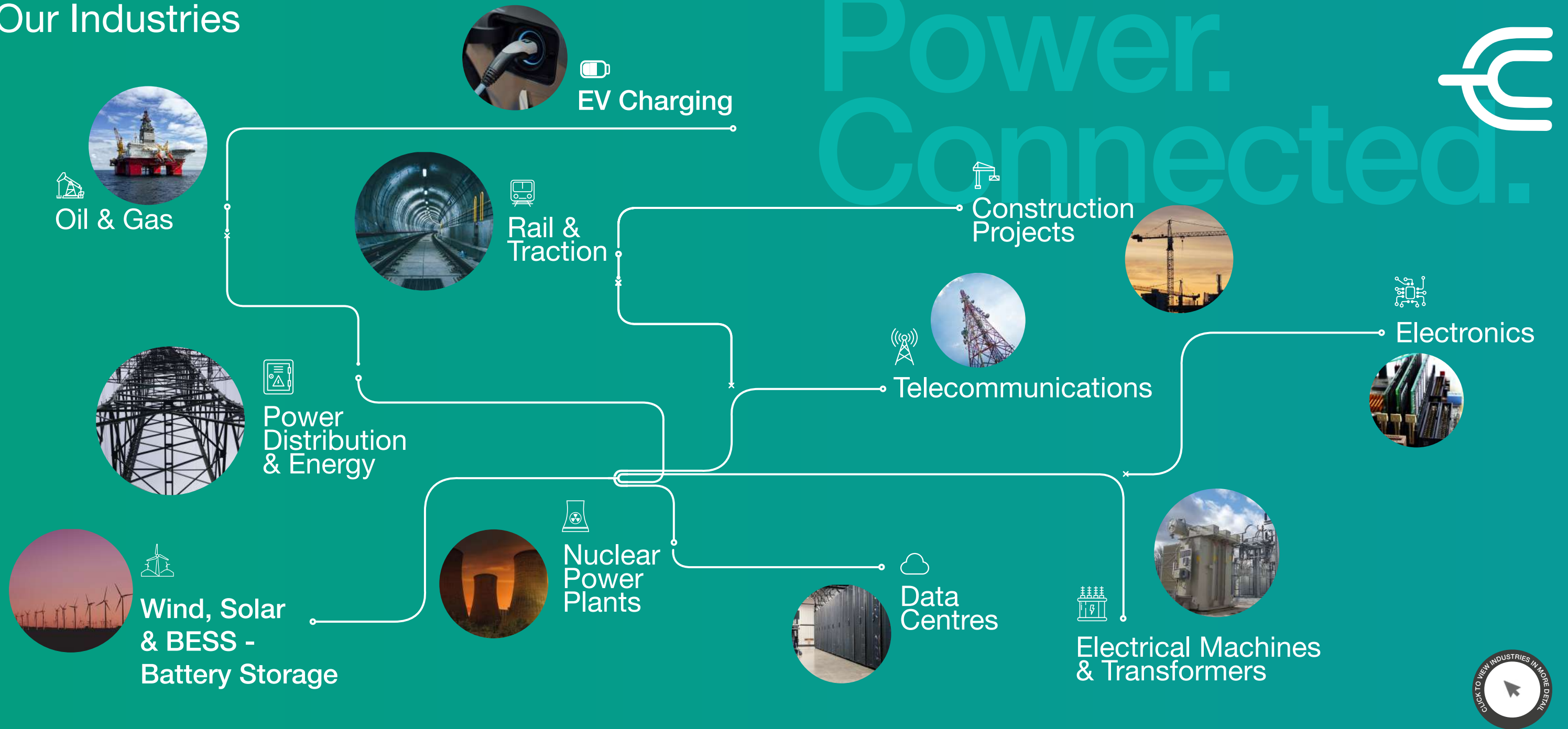
Contents

- 04 Industries & Brands
- 06 Screened Separable Connectors
- 07 Heat Shrink & Cold Shrink Solutions
- 08 Other LV-HV Joints, Glands & Accessories
- 09 LV, MV & HV Cable Prep & Jointing Tools
- 10 Sundry Items
- 12 Crimping Tool Systems
- 16 Cable Trough, Ducts & Trays
- 17 Cable Cleats & Clamps
- 18 Cable Management Solutions
- 19 Earthing, Lightning & Surge Protection
- 20 Exothermic Welding, Railway & Traction
- 21 Power Cable Accessories & Components

INTERACTIVE DOCUMENT

Click on the page number to take you to the relevant page.
Click [Contents](#) to return here.

Our Industries



Our Brands

We Stock, Supply & Specify Solutions from leading brands across the industry.



Screened Separable Connectors



1.0



Discover our range of MV & HV **Separable Connectors**, also known as Cable Plugs, Tees, or Elbows, designed for quick and easy installation. These connectors offer high reliability and exceptional performance for indoor and outdoor applications, ensuring seamless connectivity across various setups.

Please contact a member of our Technical Sales Team for expert advice or additional details on your application's requirements.



Interface A
Up to 24 kV | 250 A



Interface B
Up to 36 kV | 400 A



Interface C Symmetrical
Up to 42kV | 630-1250 A



Interface C Compact
Up to 42 kV | 630-1250 A



Interface D
Up to 24kV | 1250 A



Interface E
Up to 42 kV | 800 A



Interface F
Up to 42 kV | 2500 A



Accessories



Pfisterer CONNEX offers an extensive range of modular connecting and jointing components with plug-in technology, along with a variety of practical assembly tools. This range ensures ultimate safety and maximum power for resilient power grid operation. CONNEX performs reliably in virtually any environment — indoors or outdoors, above or below ground, on land or at sea, and in settings ranging from busy cities to remote caverns.



Transformer Sockets



Cable Connections



Connex Accessories



Assembly Tools

Brands we stock in this category



Heat Shrink & Cold Shrink Solutions



Heat Shrink Cable Joints, Terminations, Tubes & Other Components in a wide range of sizes, shapes and materials, each with specific properties suitable for different applications. They form tight and strong seals and feature increased chemical resistance and mechanical strength. (Installation: Expose the heat shrink cable component to thermal energy with a blow torch or heat gun. When reaching the necessary threshold, a reduction in volume takes place, creating a tight seal around the cable).



Heat Shrink Cable Joints & Kits



Heat Shrink Cable Terminations & Kits



Heat Shrink Termination Accessories



Heat Shrink Tubes & Sleeves



Cold Shrink Cable Joints, Terminations, Tubes & Other Components, engineered for tight spaces, quick and easy installation, increased safety, environmental friendliness and cost effectiveness. (Installation: Place a pre-expanded tube over a connector or joint and release the support liners. The joint contracts and conforms tightly to the cable without the need for external heat).



Cold Shrink Cable Joints & Kits



Cold Shrink Cable Terminations & Kits

Brands we stock in this category



LV, MV & HV Solutions

Other LV-HV Jointing Solutions & Accessories



1.0



Our comprehensive range includes other LV- HV Jointing Solutions for Industrial, Universal, Afumex LSOH, Fire Performance, Waterproof, Resin, Underground, Hydrocarbon Resistant, Heat Shrink and Elaseded Jointing, suitable for numerous sectors.



LV Resin Joints



Fire Resistant & LSOH Joints

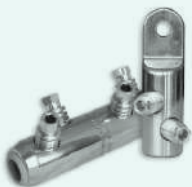


Straight Joints



Branch Joints

LV, MV & HV Jointing Support Accessories are essential components for installing, connecting, terminating, jointing and maintaining low, medium, and high voltage cables. They are crucial for ensuring secure connections, reliable jointing, proper cable alignment and overall cable network reliability.



Mechanical Lugs & Connectors



Split Clamps



Cable Heating / Straightening



Cable Jointing Stands



Umbrellas & Tents

Brands we stock in this category



LV, MV & HV Cable Prep & Jointing Tools

Contents

1.0

Explore our selection of LV, MV & HV Cable Jointing Tools tailored to meet the needs of electrical cable jointers working with a variety of cables and conductors. Suitable for 11kV to 400kV polymeric cables with XLPE or EPR insulation, our tools cover all aspects of cable preparation, cutting, stripping and more. Choose from a wide range of leading brands for your jointing tool requirements, whether you're dealing with Core Insulation, Semi-Con or Outer Sheath.



Core Insulation Tools



Semi-Con Tools



Outer Sheath Tools



Other Cable Prep Tools



Brands we stock in this category



LV, MV & HV Solutions

Sundry Items

1.0

Complete your installations with our **Sundry Items**, including Cable Cleaning Wipes, White Rags, Fixings and Electrical Tapes. Carefully selected for quality and reliability, these high-performance products are essential for cleaning, fastening and preparing cables.



Consumables & Abrasives

- Electrical Tapes
- Abrasives
- Adhesives & Sealants
- Finishing Materials
- Wipes



Fixings & Fasteners

- Screws & Nails
- Bolts, Nuts & Washers
- Connectors & Brackets
- Hinges & Handles



Site Supplies & Safety

- PPE
- Cleaning & Debris Removal
- Marking & Measurement
- Lubricants & Maintenance
- Protective Coverings



Miscellaneous Small Tools

- Utility Knives & Blades
- Clamps & Vices
- Wrenches & Pliers
- Levels & Squares

Brands we stock in this category



Official 3M Kitting Partner



Contact us for more details +44 (0)1744 762 929

Hire Cutting Tools



Battery & mechanical cable cutters to cut armoured or unarmoured cable.

The right tool for the job **EVERY** time.

Hire yours today!

CONTACT OUR HIRE TEAM NOW
☎ 01744 762 929
✉ hire@etechcomponents.com

Crimping Tool Systems

2.0



Our **Crimping Tools** range from simple hand-operated models to advanced electrically-and battery-powered hydraulic models. Crimp Stations & Software for industrial crimping needs, analysis of crimps and system calibration are also available.

We support our customers by offering Technical Support, Crimping Courses, Tool Demonstrations and On-Site Crimping Inspection & Assessment. Finally, our Tool Service Department can support you with Crimp Tool & Power Source Repair, Check, Calibration, Maintenance & Certification.

Is your crimping system compliant and up to the relevant standards?



Hand Crimpers



Mini Battery Crimp Tools



Battery Operated Crimp Tools



Battery Operated Pistols



Crimping Heads



Crimping Station



Foot Pumps



Battery Operated Pumps

Brands we stock in this category



Crimping Lugs, Dies & Accessories

Contents
2.0



Crimping Dies, Punches and Matrices: Designed for crimping Cu Terminals, Al Terminals, and C-sleeves using different tool types. These components play a crucial role in ensuring secure and reliable connections in electrical applications.
Assortment and Storage Tool Boxes and Kits: Designed for professionals and hobbyists to store, carry and assort tools for crimping, preparing, cutting and stripping along with all the necessary accessories.



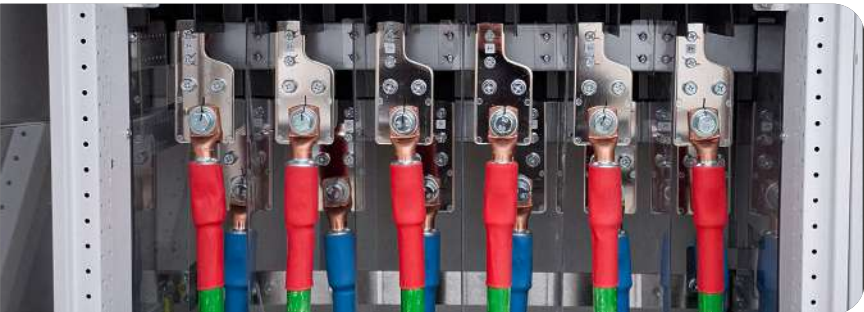
Crimping Dies



Punches & Matrices



Assortment & Storage Boxes & Kits



High Quality Cable Lugs, Terminals & Connectors made from pure aluminium (Al) 99.7%, electrolytic copper (Cu) 99.9%, pre-insulated, un-insulated, end terminals, c-sleeves and other types in a wide variety of sizes and specs.



Copper (Cu)



Aluminium (Al) & Bimetallic (Alcu)



C-Sleeves



Screw - Shearbolt



End Terminals - Ferrules



Pre-Insulated



Un-Insulated



Stainless Steel (SS316L)

Brands we stock in this category



Complete Crimping Systems

Hire Crimping Tools



Crimping tools available to crimp all sizes of cable!

The right tools make all the difference.

Hire yours today!

CONTACT OUR HIRE TEAM NOW
☎ 01744 762 929
✉ hire@etechcomponents.com



Calibrate Crimp Tools

Contents



Power. Connected.

Service

Repair

Calibration

Maintenance



Elpress Authorized Partner

Technical Support & Training Centre

At E-Tech Components, we don't just supply tools – we support your success.

- Expert Technical Support – Get the answers you need, when you need them.
- Certified Training Courses & Seminars – Covering Crimping Systems, LV-HV Cable Jointing and more.
- Maximise Your Investment – Learn how to get the best out of every tool.

Need expert guidance? **We're always here to help.**



Cable Ducts, Trays, Troughs, Covers & Duct Sealants

Explore our diverse range of **Cable Ducts, Trays, Conduits, Covers, Rolls, Troughs & Duct Sealants** designed for efficient Cable Management, Routing & Protection. From underground multi-rack cable installations to wall and roof bendable cable trays, and from specialised conduits to heavy duty highly visible damage prevention solutions, our products cater to a wide range of cable management and protection needs.



Ducting Systems



Cable Containment



Troughing Systems



Conduits & Fittings



Covers, Rolls & Tapes



Mechanical Duct Seals

Brands we stock in this category



Cable Cleats & Clamps

Cable Cleats & Clamps ensure the retention, securing and supporting of cables. They restrict cable movement and provide resistance to electro-mechanical forces. They can be mounted on supports in many ways, but they must be correctly installed at intervals to satisfy certain requirements. Choose the material, the design and finish of the cleat to match your application.



Single Way



Trefoil - Triple



Quad - Multiple



Fire Resistant

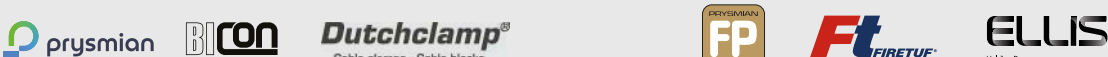


Blocks - Transits



Fixing Kits & Accessories

Brands we stock in this category



Cable Management Solutions

3.0

Elevate your Cable Management with our comprehensive range of Fire Rated Fixings, Trailing Cable Solutions, and Cable Ties tailored for electrical installation, datacom, telecom, fire protection, seismic, HVAC and many more applications.

Other solutions we offer for identifying and protecting cables include Cable Labels & Markers, Cable Laying Equipment, Transit Systems and Duct Sealants.



Fire Rated Fixings



Trailing Cable Solutions



Cable Ties & Banding Systems



Cable Transit Systems



Cable Labels, Markers & ID



Cable Laying Equipment



Pulling Grips & Accessories



Duct Sealants

Brands we stock in this category



Earthing Protection

Contents
4.0

In an electrical installation, an Earthing or Grounding Protection System connects specific parts of that installation with the Earth's conductive surface for safety and functional purposes. We stock and offer a variety of different Earthing Protection Solutions and Complete Systems. Please contact a member of our Technical Sales Team to discuss your specific installation requirements.



Deep Earthing System



Earth Bars



Earth Rods & Accessories



Earth Plates & Lattice Mats



Ground Enhancement Material



Clamps



Earth Braids



Conductors

Lightning & Surge Protection Solutions



Lightning Protection Systems & Solutions protect structures from damage caused by lightning strikes and voltage spikes. They also improve safety by securely channelling high voltage into the ground, reducing the risk of injury.



Air Rods



B Bonds



Bimetallic Connectors



Surge Protection Devices

Brands we stock in these categories



Exothermic Welding



Our **Exothermic Welding** Solutions create permanent molecular bonds that never loosen, degrade or corrode. Trusted worldwide for grounding and earthing, these connections deliver exceptional conductivity, long-term corrosion resistance and proven reliability — even under repeated fault currents.



Exothermic Connections



Welding Material



Ignition Systems



Tools & Accessories

Brands we stock in this category



E-Tech provides fully accredited exothermic welding training. Contact us for more information.



Railway & Traction



Our wide portfolio includes **innovative installation solutions for power cable circuits in Railway & Traction applications.**



Connecta Lighting & Power System



Flexo Rail



Modular Power System



Rail Accessories

Brands we stock in this category



Power Cable Accessories & Components



Contents

4.0



A comprehensive range of Power Cable Accessories & Components that save time, reduce costs, improve quality and ensure compliance to industry standards and regulations.

Among others, this category includes:

Cable Glands & Kits

For Industrial, Hazardous, Fire Performance & LS0H Applications.



Industrial Glands & Kits



Hazardous Glands & Kits



Fire Performance & LS0H Glands & Kits

Compounds & Resins

Designed to prevent galvanic corrosion, enhance connections in electrical joints and prevent contaminants from influencing the connection.



Compounds



Resins



Junction Boxes



Joint Closures

Junction Boxes & Joint Closures

Designed to offer watertight and pressure-tight protection for optical fibres and splices across all cable types, even in the most demanding environments.

Brands we stock in this category



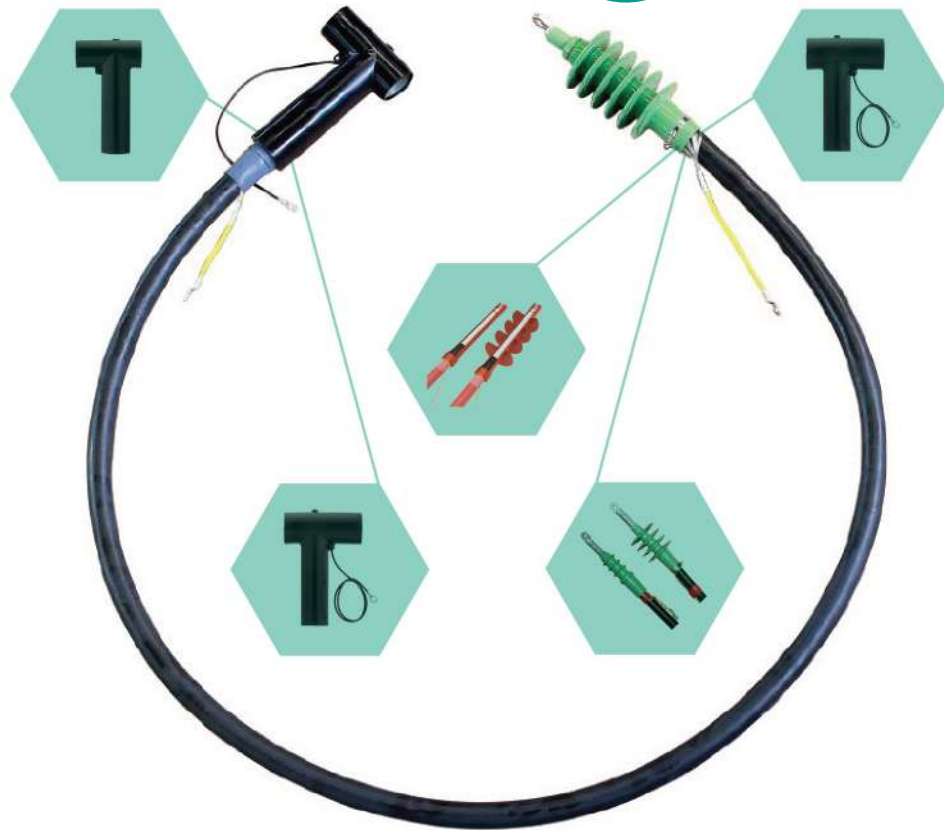
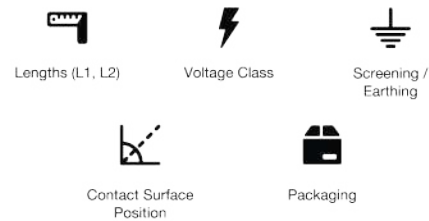
Other Power Cable Accessories & Components

Fully Customisable Jumper Cables & Test Leads

Ready-to-install and Pre-Assembled
by Qualified Personnel



Cable Specifications are Subject
to Customer Requirements



Technical Support & Training Centre



**Courses For
Apprentices**



Expert Seminars



Certified Training



**Technical
Submittals**



**Tool
Demonstrations**

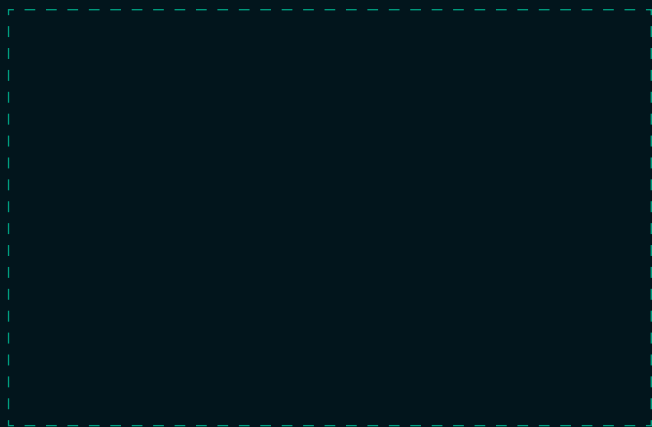


**On-Site Crimping
Inspection &
Assessment**

**We are an
Official UK**

Nexans Kitting Partner & Provider!

✓ Large Stocks ✓ Custom MV Solutions ✓ Shorter Lead Times ✓ Full Technical Support



etechcomponents.com